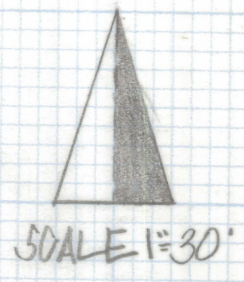


DISCLAIMER:

This unrecorded Record of Survey was donated to the City of Tucson. The City of Tucson provides this data for your personal use "as is." Additionally, the City of Tucson provides this information with the understanding that it is not guaranteed to be accurate, correct or complete and conclusions drawn from such information are the responsibility of the user.

SANTA FAULA STREET



+1760
+C-127

+1770
+C-117

+1800
+C-132

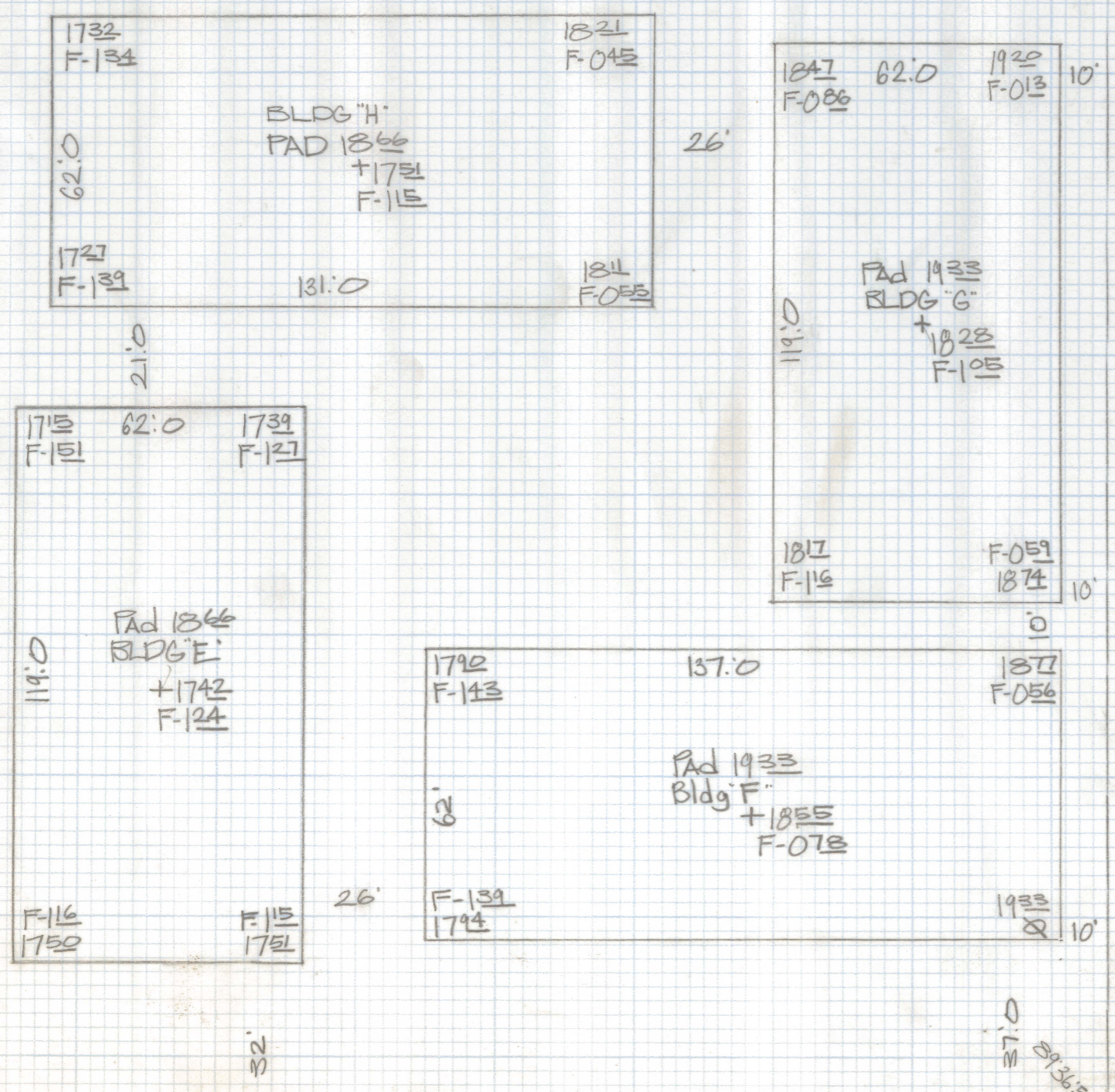
+1842
+C-154

+1910
+C-252

+1800
+C-042

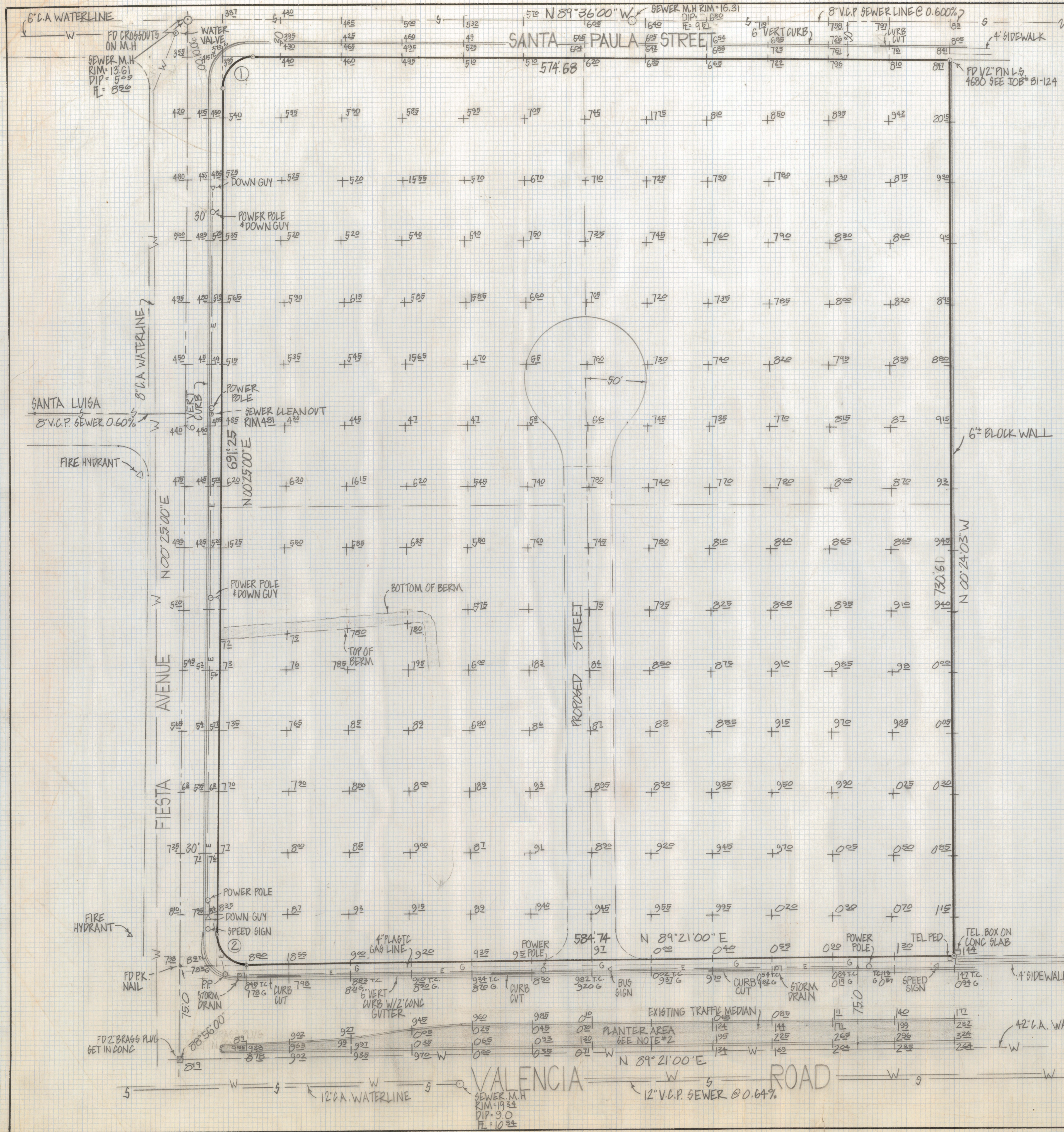
SKETCH
SHOWINGS

FILLS TO PAD ELEVATIONS AND
CUTS IN PARKING AREA .5:0 OFFSETS
AROUND BUILDINGS

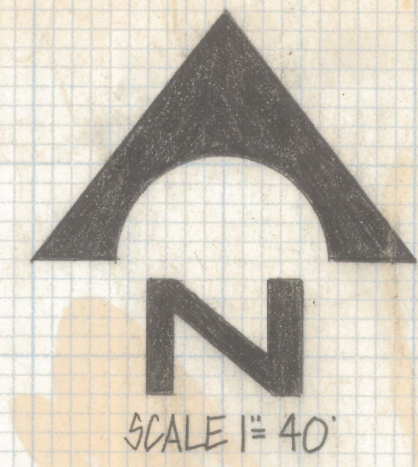


APARTMENTS UNDER
CONSTRUCTION

ROBERT F. NELLEN
REGISTERED LAND SURVEYOR
TUCSON, ARIZONA
JOB# 82-82



CURVE DATA					
NO	RADIUS	DELTA	TANGENT	LENGTH	CHORD
1	25.0	89°59'00	15.0	39.27	35.86
2	25.0	91°04'00	15.47	39.74	35.68



RESULTS OF SURVEY

OF A PORTION OF LOT 472 FIESTA PARK SUBDIVISION AS RECORDED IN BOOK 15 OF MAPS AND PLATS AT PAGE 100 IN THE OFFICE OF THE PIMA COUNTY RECORDER PIMA COUNTY ARIZONA

NOTES

- (1) - 9 INDICATES SET 1/2 PIN MKD L.S. 4680 UNLESS NOTED
- (2) THERE IS A SPRINKLER SYSTEM IN PLANTER AREA
- (3) FIRE HYDRANT ON S.W. CORNER SANTA PAULA AND FIESTA AVE
- (4) THERE ARE UNDERGROUND UTILITIES IN THE AREA, BEFORE DIGGING OR DESIGNING CRITICAL IMPROVEMENTS CALL BLUE STAKE FOR EXACT LOCATION CALL 792-2211
- (5) SEE TUCSON WATER UTILITY PLAN NO TT-14 AND PLAN NO 55-14
- (6) REFERENCE JOB # 81-124



ROBERT F. MELLEN
REGISTERED LAND SURVEYOR
TUCSON, ARIZONA
JOB # 82-82