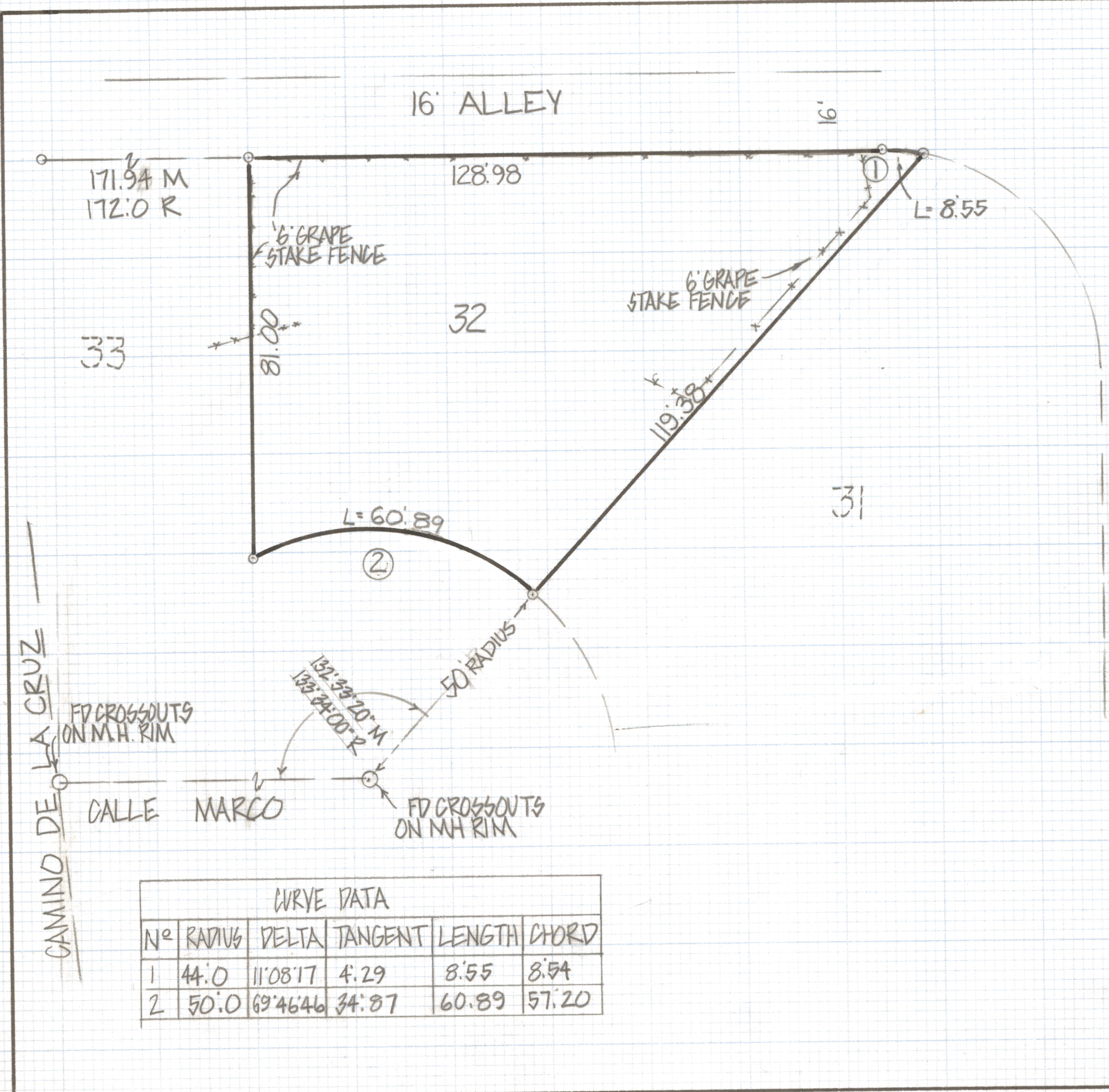


DISCLAIMER:

This unrecorded Record of Survey was donated to the City of Tucson. The City of Tucson provides this data for your personal use "as is." Additionally, the City of Tucson provides this information with the understanding that it is not guaranteed to be accurate, correct or complete and conclusions drawn from such information are the responsibility of the user.



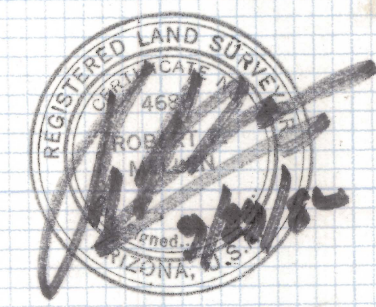
RESULTS OF SURVEY

OF LOT 32 CASAS DEL OESTA RECORDED
 IN BOOK 23 OF MAPS AND PLATS AT PAGE
 31 IN THE OFFICE OF THE PIMA COUNTY
 RECORDER PIMA COUNTY ARIZONA

NOTES

(1) ϕ INDICATES FOUND 1/2" PIN MKD P.E. 6377
 UNLESS NOTED

CURVE DATA					
Nº	RADIUS	DELTA	TANGENT	LENGTH	CHORD
1	44.0	11°08'17"	4.29	8.55	8.54
2	50.0	69°46'46"	34.87	60.89	57.20



ROBERT F. MELLEN
 REGISTERED LAND SURVEYOR
 TUCSON, ARIZONA
 JOB# 82-88