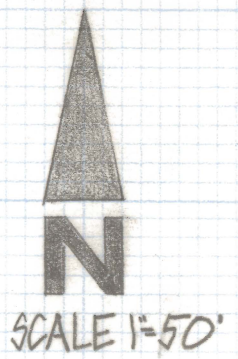
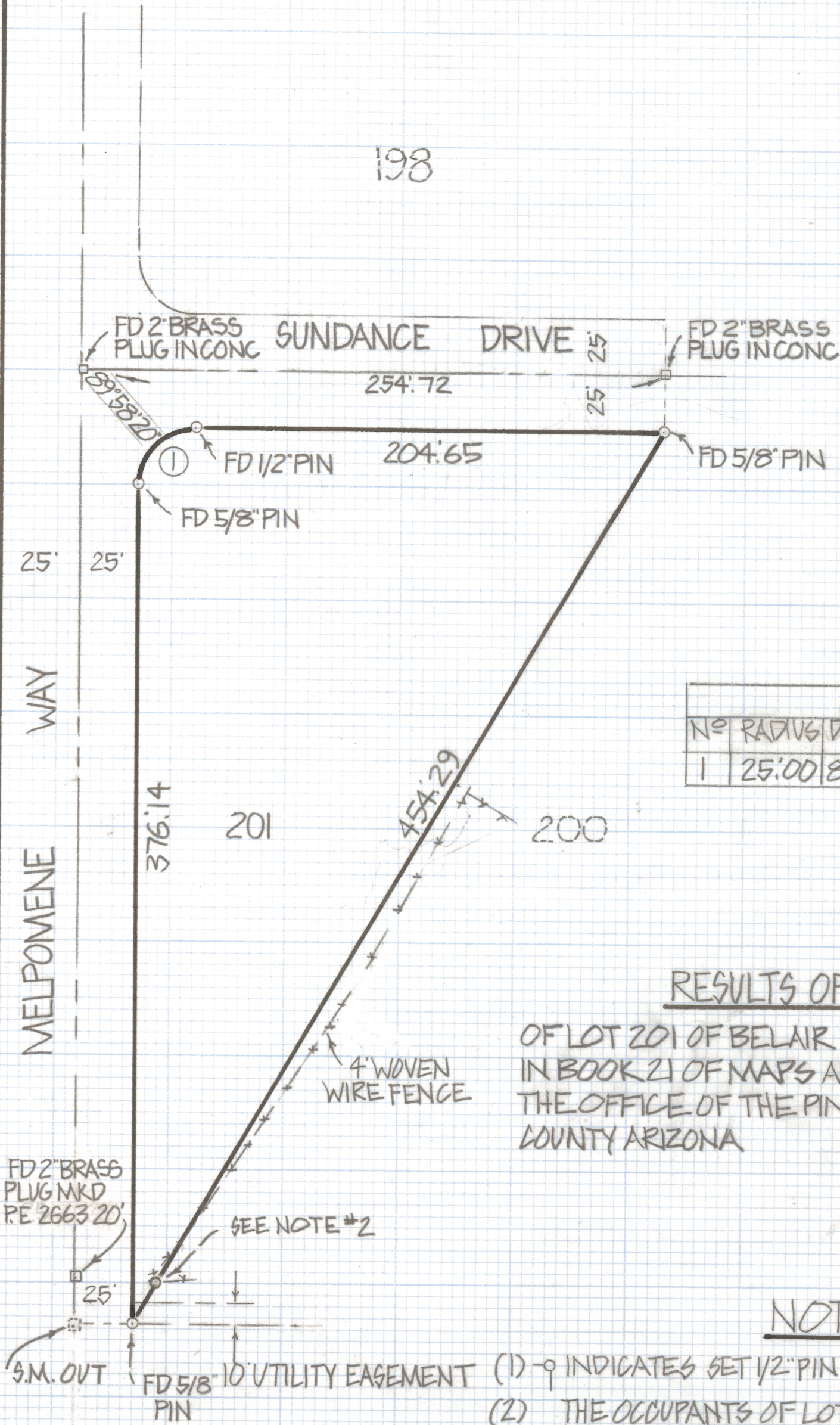


DISCLAIMER:

This unrecorded Record of Survey was donated to the City of Tucson. The City of Tucson provides this data for your personal use "as is." Additionally, the City of Tucson provides this information with the understanding that it is not guaranteed to be accurate, correct or complete and conclusions drawn from such information are the responsibility of the user.



198



CURVE DATA					
No	RADIUS	DELTA	TANGENT	LENGTH	CHORD
1	25.00	89°58'20"	24.99	39.26	35.35

RESULTS OF SURVEY

OF LOT 201 OF BELAIR RANCH ESTATES RECORDED IN BOOK 21 OF MAPS AND PLATS AT PAGE 22 IN THE OFFICE OF THE PIMA COUNTY RECORDER PIMA COUNTY ARIZONA

NOTES

- (1) - ① INDICATES SET 1/2" PIN L.S. 4680 UNLESS NOTED
- (2) THE OCCUPANTS OF LOT 200 WAS INFORMED OF THE ENCROACHMENT OF THEIR FENCE ON OCT. 15, 1982



ROBERT F. MELLEN
 REGISTERED LAND SURVEYOR
 TUCSON, ARIZONA
 JOB # 82-91