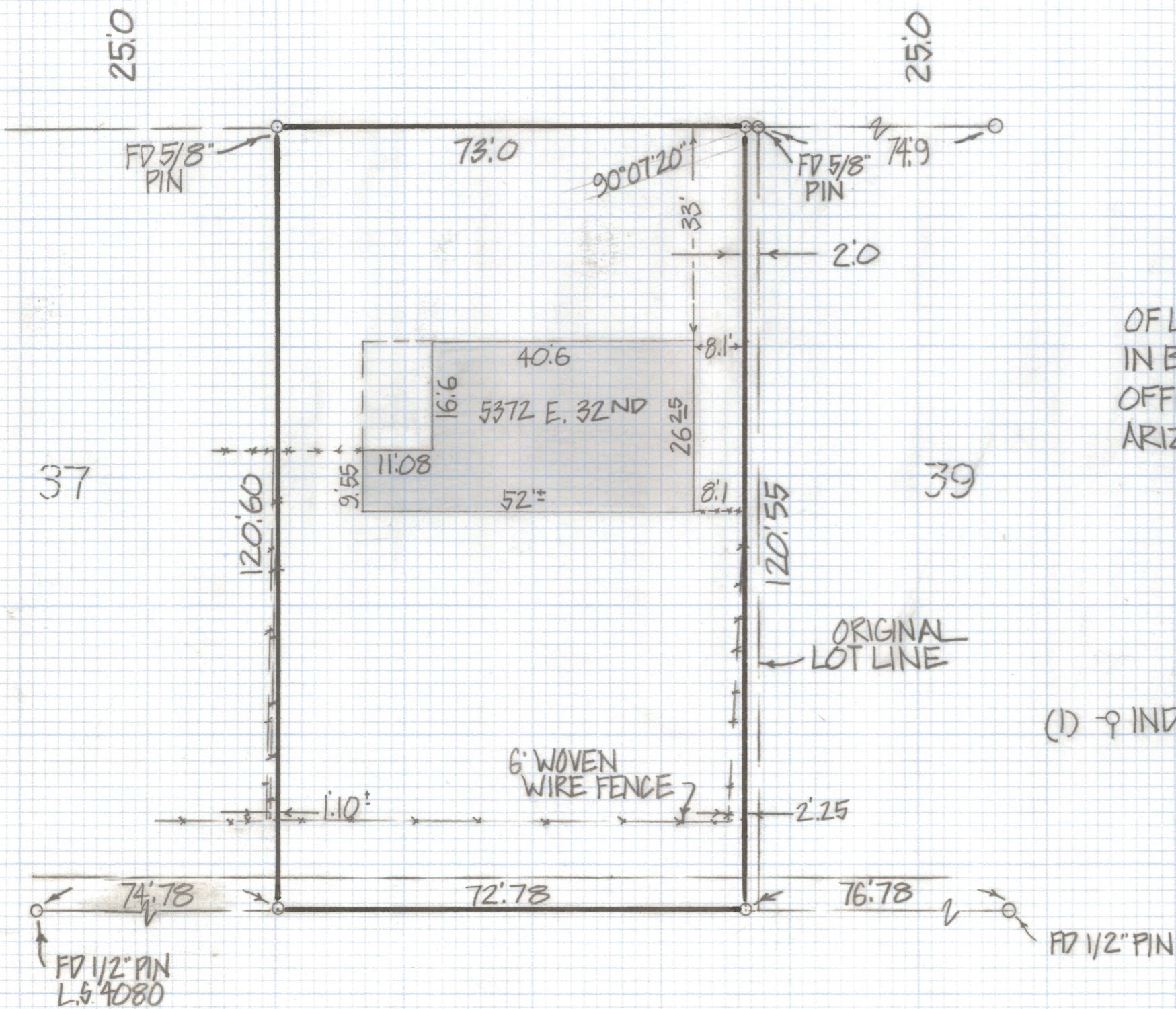
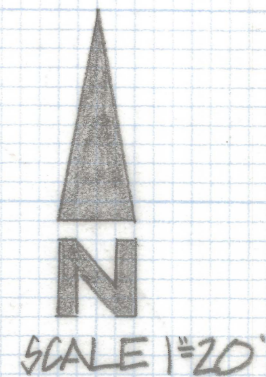


DISCLAIMER:

This unrecorded Record of Survey was donated to the City of Tucson. The City of Tucson provides this data for your personal use "as is." Additionally, the City of Tucson provides this information with the understanding that it is not guaranteed to be accurate, correct or complete and conclusions drawn from such information are the responsibility of the user.

32 ND STREET



RESULTS OF SURVEY

OF LOT 38 BLOCK 8 FERRY ADDITION RECORDED
 IN BOOK 9 OF MAPS AND PLATS AT PAGE 5 IN THE
 OFFICE OF THE PINA COUNTY RECORDER PINA COUNTY
 ARIZONA

NOTES

(1) ♀ INDICATES SET 1/2" PIN MKD L.S. 4680 UNLESS NOTED



ROBERT F. MELLEN
 REGISTERED LAND SURVEYOR
 TUCSON, ARIZONA
 JOB# 82-93