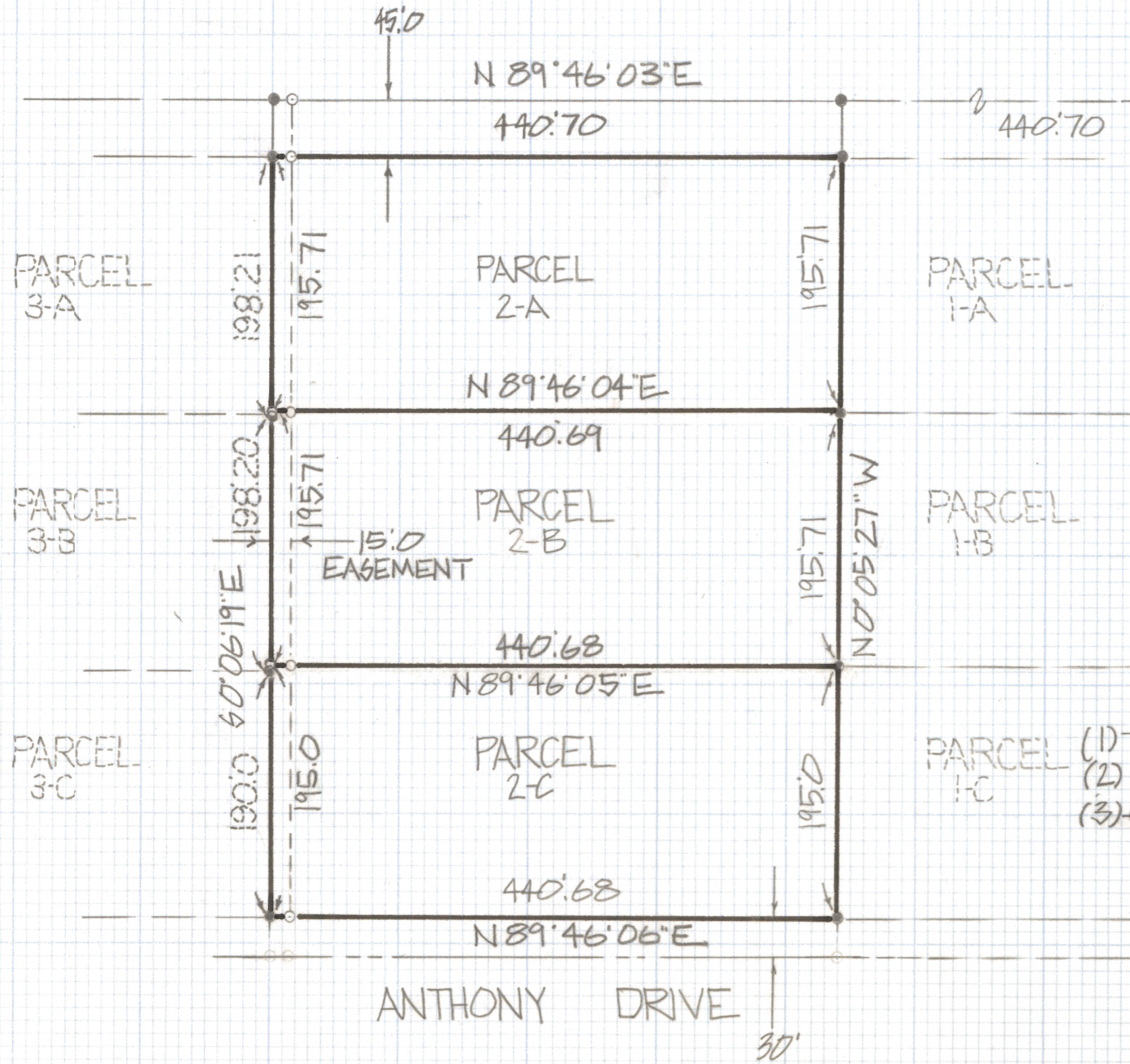


# **DISCLAIMER:**

**This unrecorded Record of Survey was donated to the City of Tucson. The City of Tucson provides this data for your personal use "as is." Additionally, the City of Tucson provides this information with the understanding that it is not guaranteed to be accurate, correct or complete and conclusions drawn from such information are the responsibility of the user.**

CLEV 66814



RESULTS OF SURVEY

OF A PORTION OF LOT ONE SECTION THIRTY-FOUR TOWNSHIP TWELVE SOUTH RANGE ELEVEN EAST GILA AND SALT RIVER BASE AND MERIDIAN PINA COUNTY ARIZONA

NOTES

- (1) ○ INDICATES SET 1/2" PIN MKD L.S. 4680 UNLESS NOTED
- (2) SEE JOB# 81-90 AND JOB# 81-120
- (3) ● INDICATES FOUND 1/2" PINS MKD L.S. 4680 SEE NOTE#2



ROBERT F. MELLEN  
REGISTERED LAND SURVEYOR  
TUCSON, ARIZONA  
JOB# 82-103