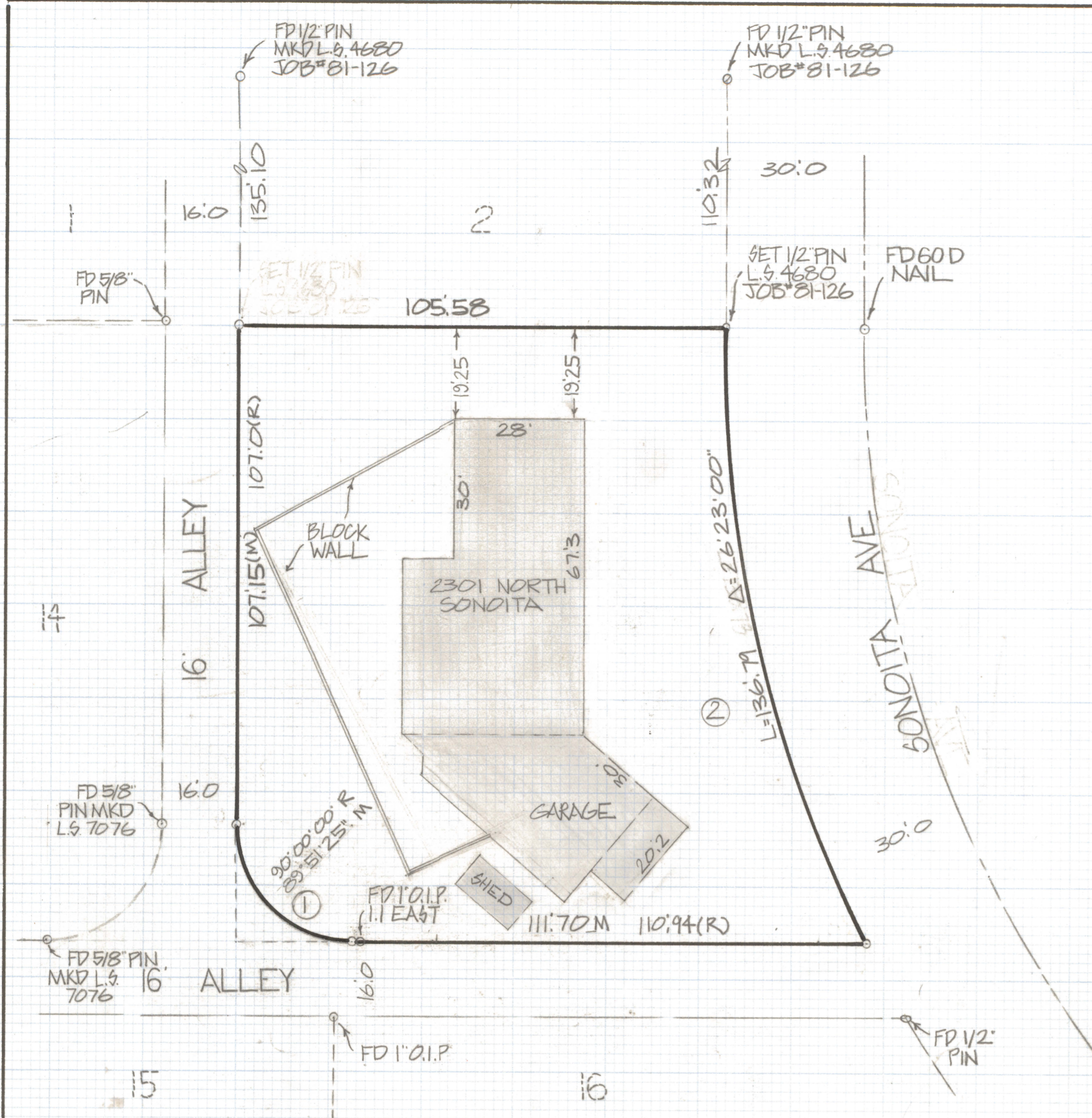
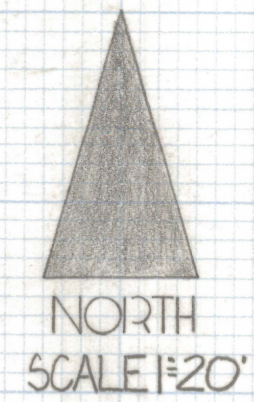


DISCLAIMER:

This unrecorded Record of Survey was donated to the City of Tucson. The City of Tucson provides this data for your personal use "as is." Additionally, the City of Tucson provides this information with the understanding that it is not guaranteed to be accurate, correct or complete and conclusions drawn from such information are the responsibility of the user.



RESULTS OF SURVEY

OF LOT 13 ROSE HILL ESTATES RECORDED IN BOOK 12 OF MAPS AND PLATS AT PAGE 47 IN THE OFFICE OF THE PIMA COUNTY RECORDER PIMA COUNTY ARIZONA

NOTES

- (1) - ♀ INDICATES SET 1/2" PIN MKD L.S. 4680 UNLESS NOTED
- (2) - SEE JOB# 81-126
- (3) M - MEASURED
- (4) R - MAP RECORD

CURVE DATA					
Nº	RADIUS	DELTA	TANGENT	LENGTH	CHORD
1	25.0	90°08'35"	25.06	39.33	35.40
2	297.05	26°23'00"	69.63	136.79	135.58



ROBERT F. MELLEN
 REGISTERED LAND SURVEYOR
 TUCSON, ARIZONA
 JOB# 83-5