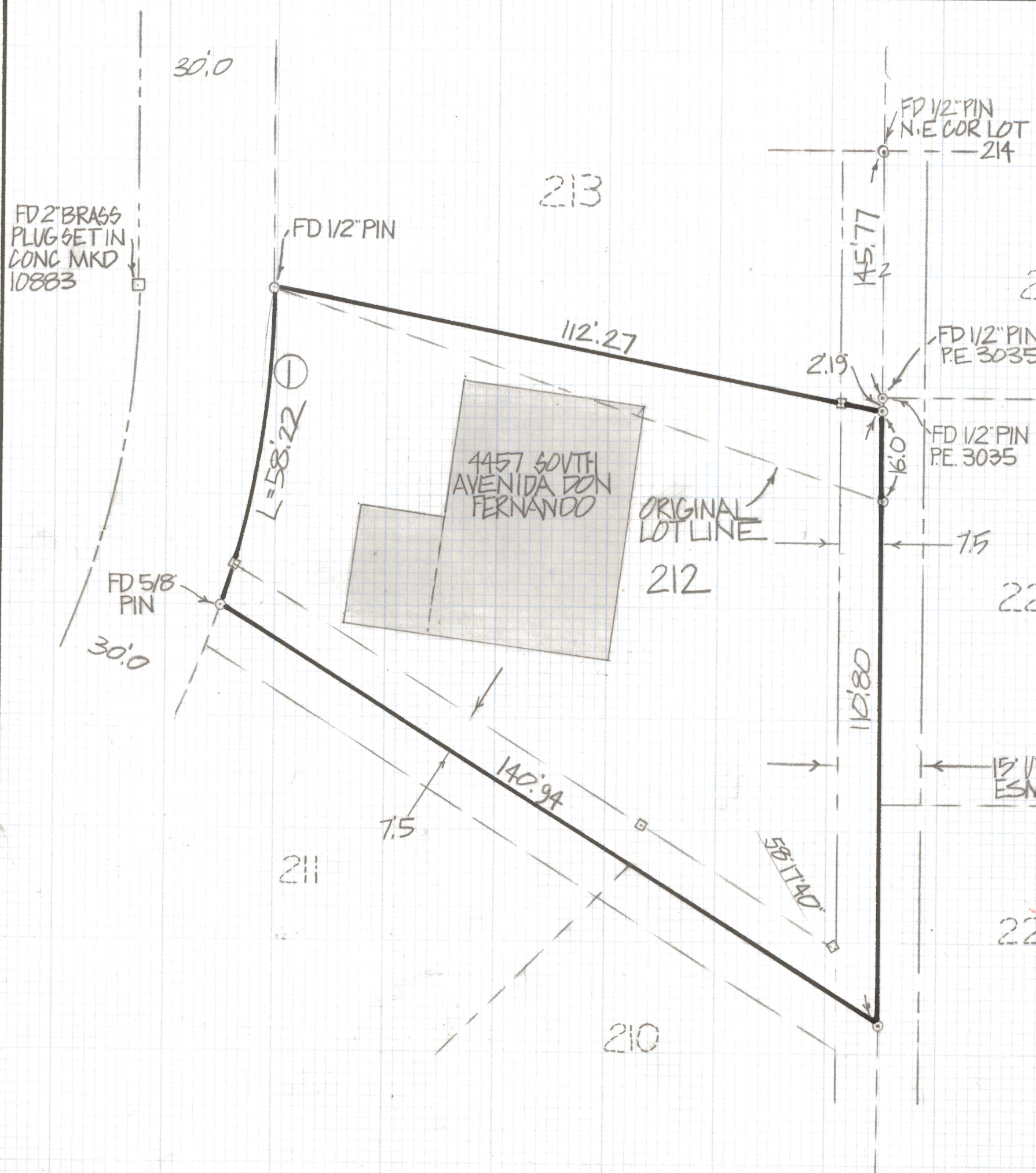
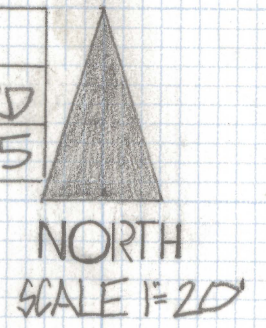


DISCLAIMER:

This unrecorded Record of Survey was donated to the City of Tucson. The City of Tucson provides this data for your personal use "as is." Additionally, the City of Tucson provides this information with the understanding that it is not guaranteed to be accurate, correct or complete and conclusions drawn from such information are the responsibility of the user.



CURVE DATA					
Nº	RADIUS	DELTA	TANGENT	LENGTH	CHORD
1	175.0	1903'39"	29'38"	58.22	57.95



RESULTS OF SURVEY

OF LOT 212 AND A PORTION OF 213 OF TUCSON MOUNTAIN VILLAGE RECORDED IN BOOK 17 OF MAPS AND PLATS AT PAGE 88 IN THE OFFICE OF THE PINA COUNTY RECORDER PINA COUNTY ARIZONA

NOTES

1. UTILITY (1) - INDICATES SET 1/2 PIN MKD L64680 UNLESS NOTED ESMT. (2) - INDICATES SET HUB AND TACK ON 7.5 EASEMENT



ROBERT F. MELLEN
REGISTERED LAND SURVEYOR
TUCSON, ARIZONA
JOB #83-6