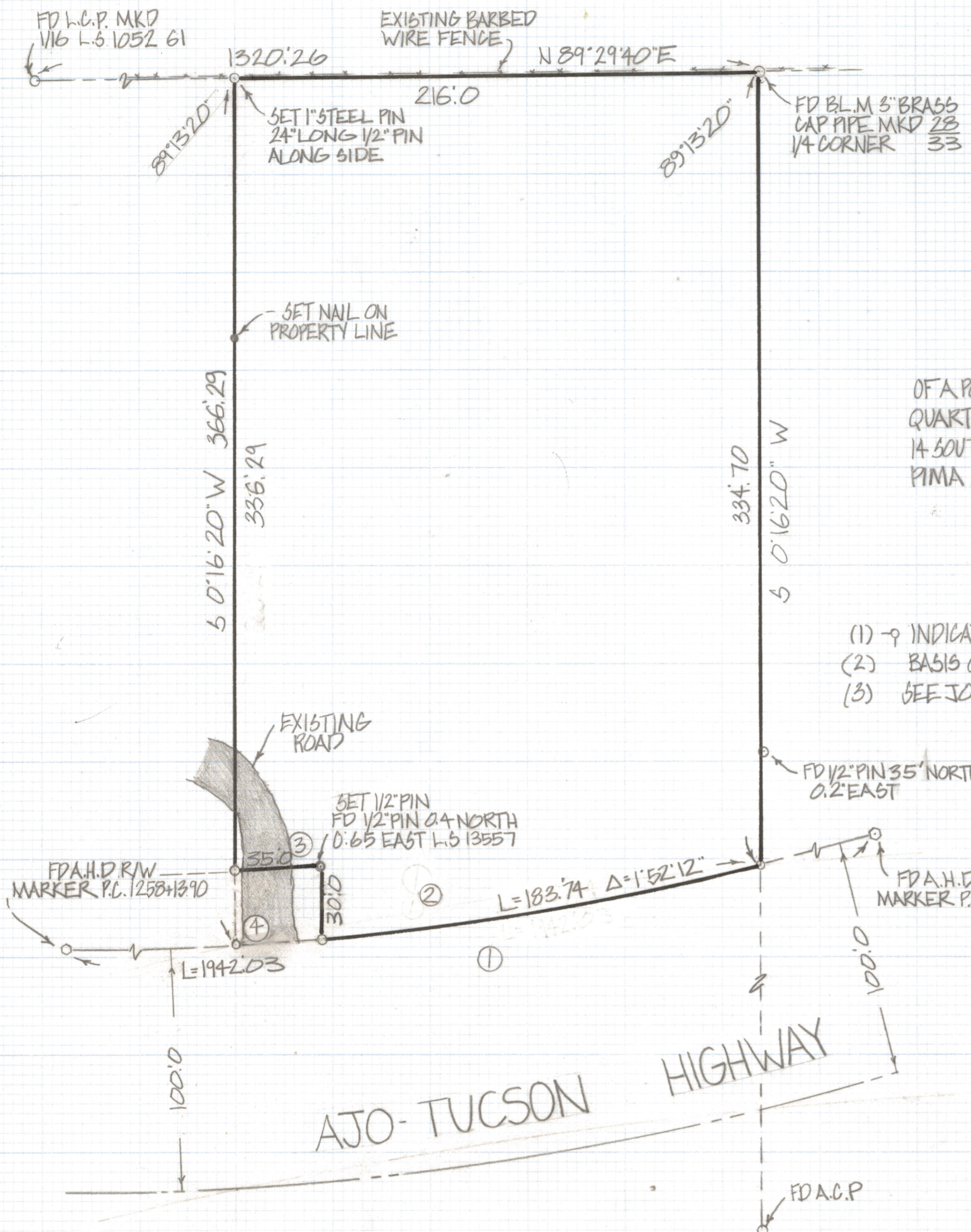


# **DISCLAIMER:**

**This unrecorded Record of Survey was donated to the City of Tucson. The City of Tucson provides this data for your personal use "as is." Additionally, the City of Tucson provides this information with the understanding that it is not guaranteed to be accurate, correct or complete and conclusions drawn from such information are the responsibility of the user.**



RESULTS OF SURVEY

OF A PORTION OF THE NORTHEAST QUARTER OF THE NORTHEAST QUARTER OF THE NORTHWEST QUARTER SECTION 33 TOWNSHIP 14 SOUTH RANGE 13 EAST GILA AND SALT RIVER BASE AND MERIDIAN PIMA COUNTY ARIZONA

NOTES

- (1) - 9 INDICATES SET 1/2" PIN MKD L.S. 4680 UNLESS NOTED
- (2) BASIS OF BEARINGS N 89° 29' 40" E PER A.H.D RIGHT-OF-WAY MAP
- (3) SEE JOB# 81-14

AJO-TUCSON HIGHWAY

CURVE DATA					
Nº	RADIUS	DELTA	TANGENT	LENGTH	CHORD
1	5629.58	19° 45' 55"	980.76	1942.03	1932.42
2	5629.58	1° 52' 12"	91.88	183.74	183.73
3	5599.58	0° 21' 29"	17.50	35.0	35.0
4	5629.58	0° 21' 22"	17.50	35.0	35.0



ROBERT F. MELLEN  
REGISTERED LAND SURVEYOR  
TUCSON, ARIZONA  
JOB # 83-14