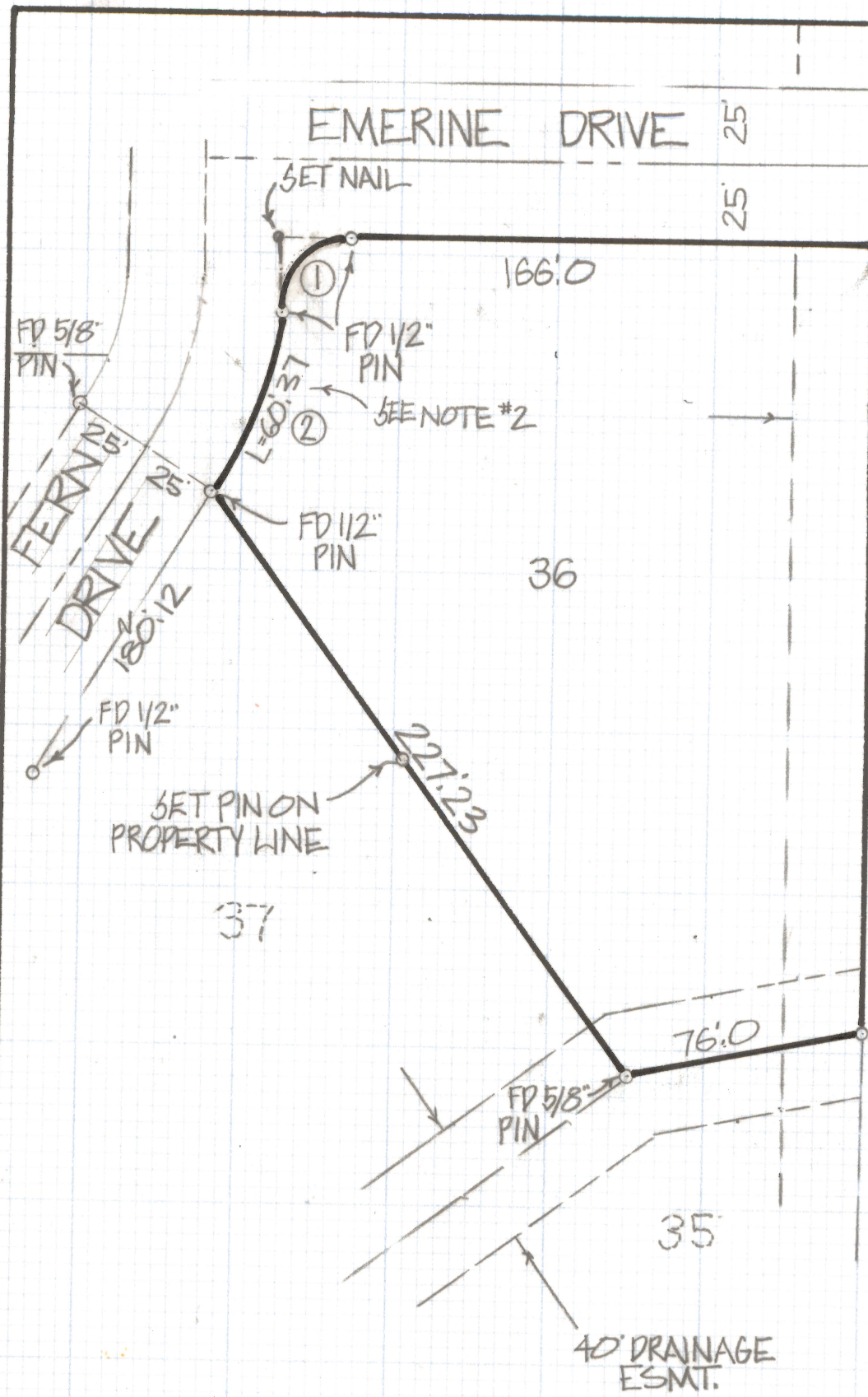
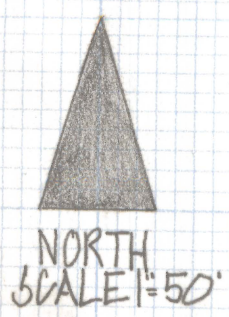


DISCLAIMER:

This unrecorded Record of Survey was donated to the City of Tucson. The City of Tucson provides this data for your personal use "as is." Additionally, the City of Tucson provides this information with the understanding that it is not guaranteed to be accurate, correct or complete and conclusions drawn from such information are the responsibility of the user.



FD L.C.P.
 EMERINE DRIVE 25'
 25'
 166.0
 (1)
 (2)
 L=60.37
 SEE NOTE #2
 FD 1/2" PIN
 FD 1" O.I.P 0.45 EAST
 FD 1/2" PIN 0.25 EAST
 0.10 SOUTH
 25.0 UTILITY EASEMENT



RESULTS OF SURVEY

OF LOT 36 SUNSET MANOR RECORDED IN BOOK VI OF MAPS AND PLATS AT PAGE 97 IN THE OFFICE OF THE PIMA COUNTY RECORDER PIMA COUNTY ARIZONA

NOTES

- (1) IT APPEARS THAT THE POWER POLES FALL OUTSIDE THE 25.0 UTILITY EASEMENT
- (2) THIS CURVE APPEARS TO BE IN ERROR ON THE SUBDIVISION PLAT



CURVE DATA					
Nº	RADIUS	DELTA	TANGENT	LENGTH	CHORD
1	25.0	85°43'16"	23.20	37.40	34.01
2	25.0	274°0'25"	30.79	60.37	59.79

ROBERT F. MELLEN
 REGISTERED LAND SURVEYOR
 TUCSON ARIZONA
 JOB # 83-16