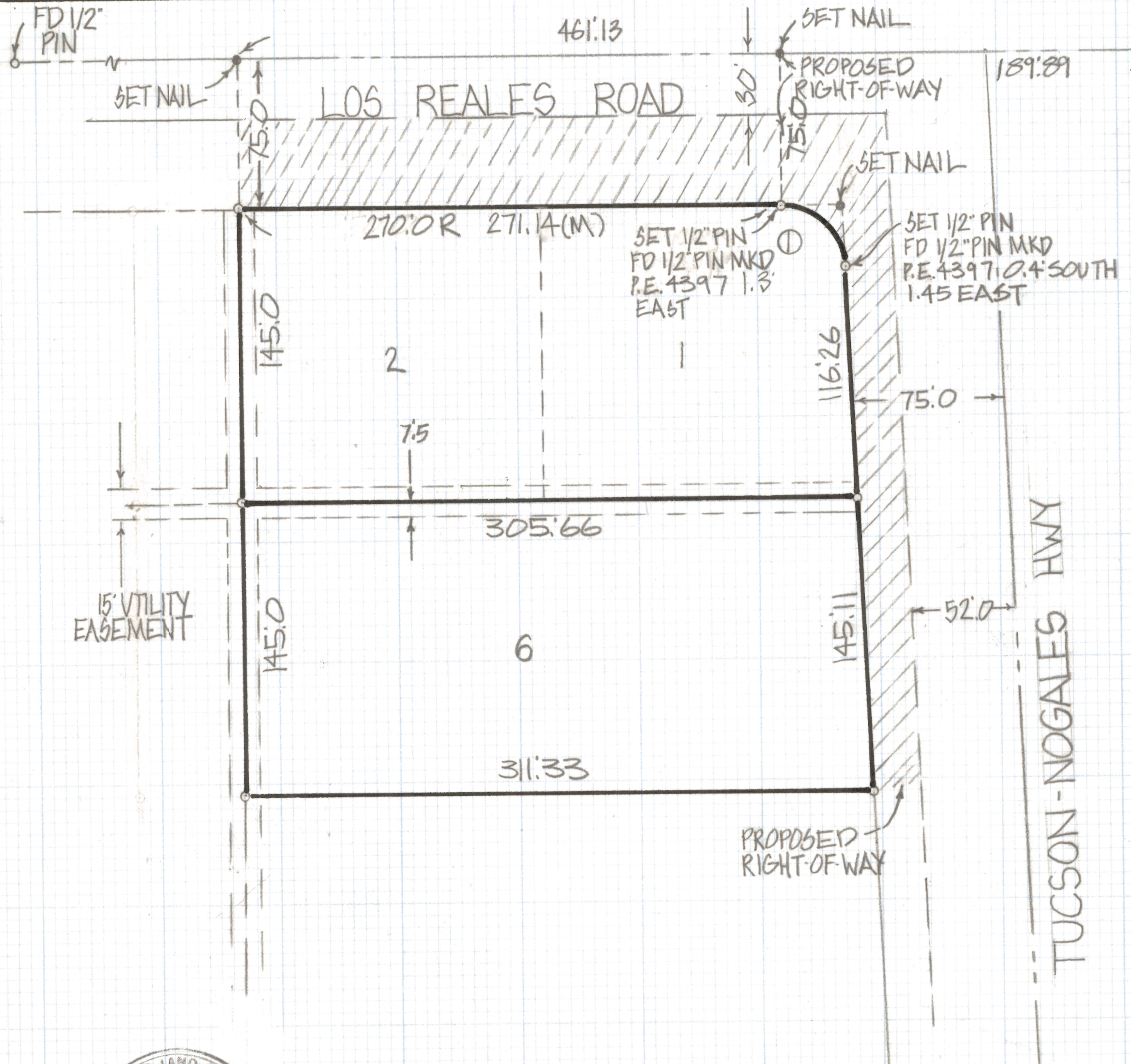


DISCLAIMER:

This unrecorded Record of Survey was donated to the City of Tucson. The City of Tucson provides this data for your personal use "as is." Additionally, the City of Tucson provides this information with the understanding that it is not guaranteed to be accurate, correct or complete and conclusions drawn from such information are the responsibility of the user.

Z-2020-426



FD G.L.O. BRASS CAP
MKD 13118
24119

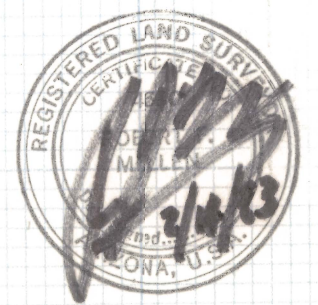


RESULTS OF SURVEY

OF LOT 1, 2 AND 6 SAN XAVIER INDUSTRIAL PARK
SECTION 24 TOWNSHIP 15 SOUTH RANGE 13 EAST
GILA AND SALT RIVER BASE AND MERIDIAN PIMA
COUNTY ARIZONA (A UNRECORDED PLAT)

NOTES

- (1) \odot INDICATES SET 1/2" PIN MKD L.S. 4680 UNLESS NOTED
- (2) THAT PLAT REFERED TO IN THE LEASE AGREEMENT DOES NOT PERTAIN TO THIS AREA, THIS SURVEY WAS BASED ON A DRAWING FURNISHED BY LEASEE. (JOB# D-69-170 BLANTON & CO.)
- (3) WE DO NOT FIND THAT THE CROSS HATCHED AREA HAS BEEN DEDICATED



CURVE DATA					
N°	RADIUS	DELTA	TANGENT	LENGTH	CHORD
1	30.0	87°45'28"	28.85	45.95	41.59

ROBERT F. MELLEN
REGISTERED LAND SURVEYOR
TUCSON ARIZONA
JOB# 83-18

Z-2020-426