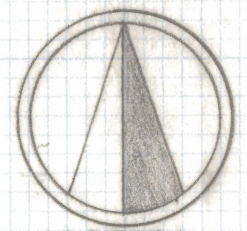


DISCLAIMER:

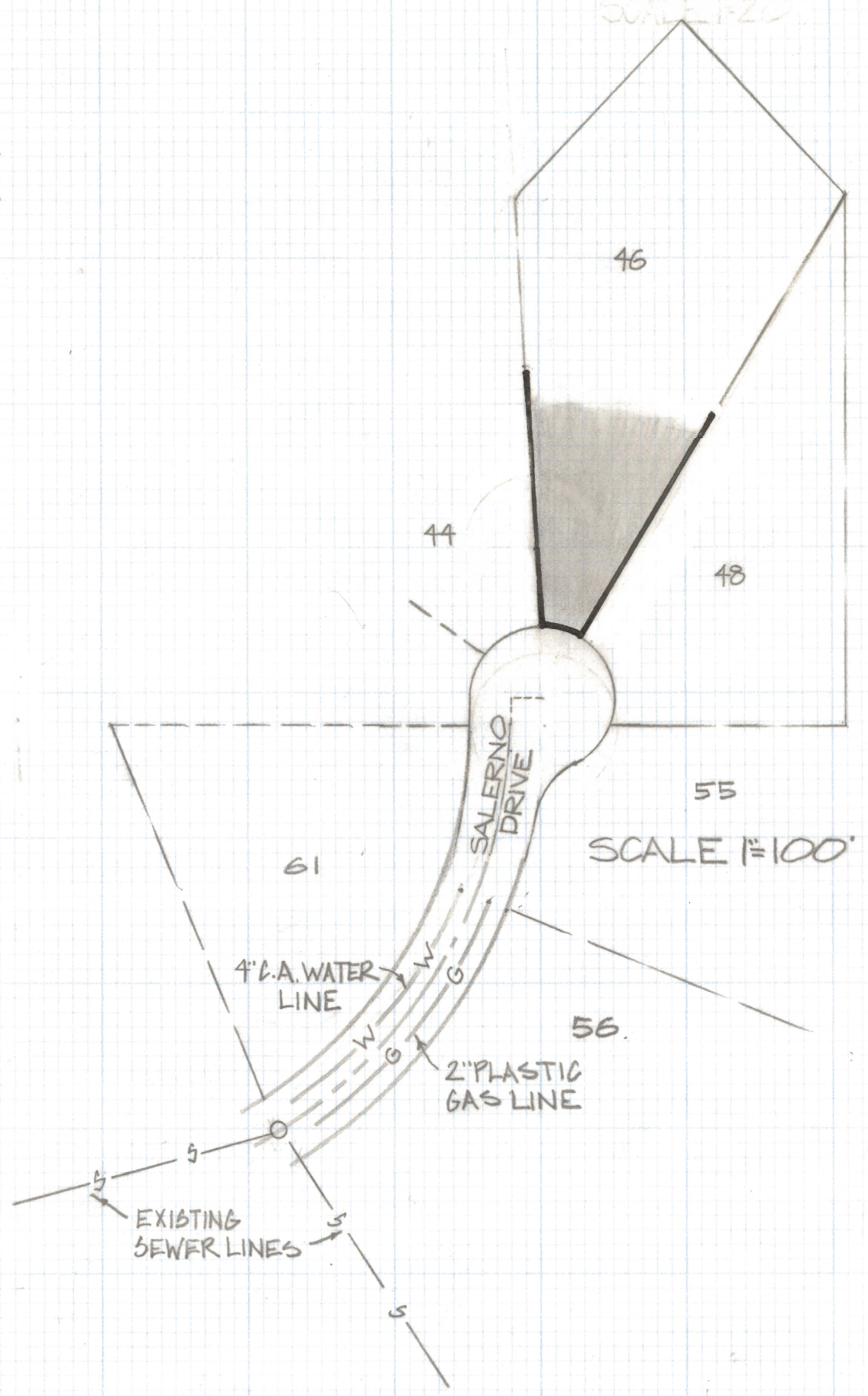
This unrecorded Record of Survey was donated to the City of Tucson. The City of Tucson provides this data for your personal use "as is." Additionally, the City of Tucson provides this information with the understanding that it is not guaranteed to be accurate, correct or complete and conclusions drawn from such information are the responsibility of the user.

TOPOGRAPHICAL SURVEY OF

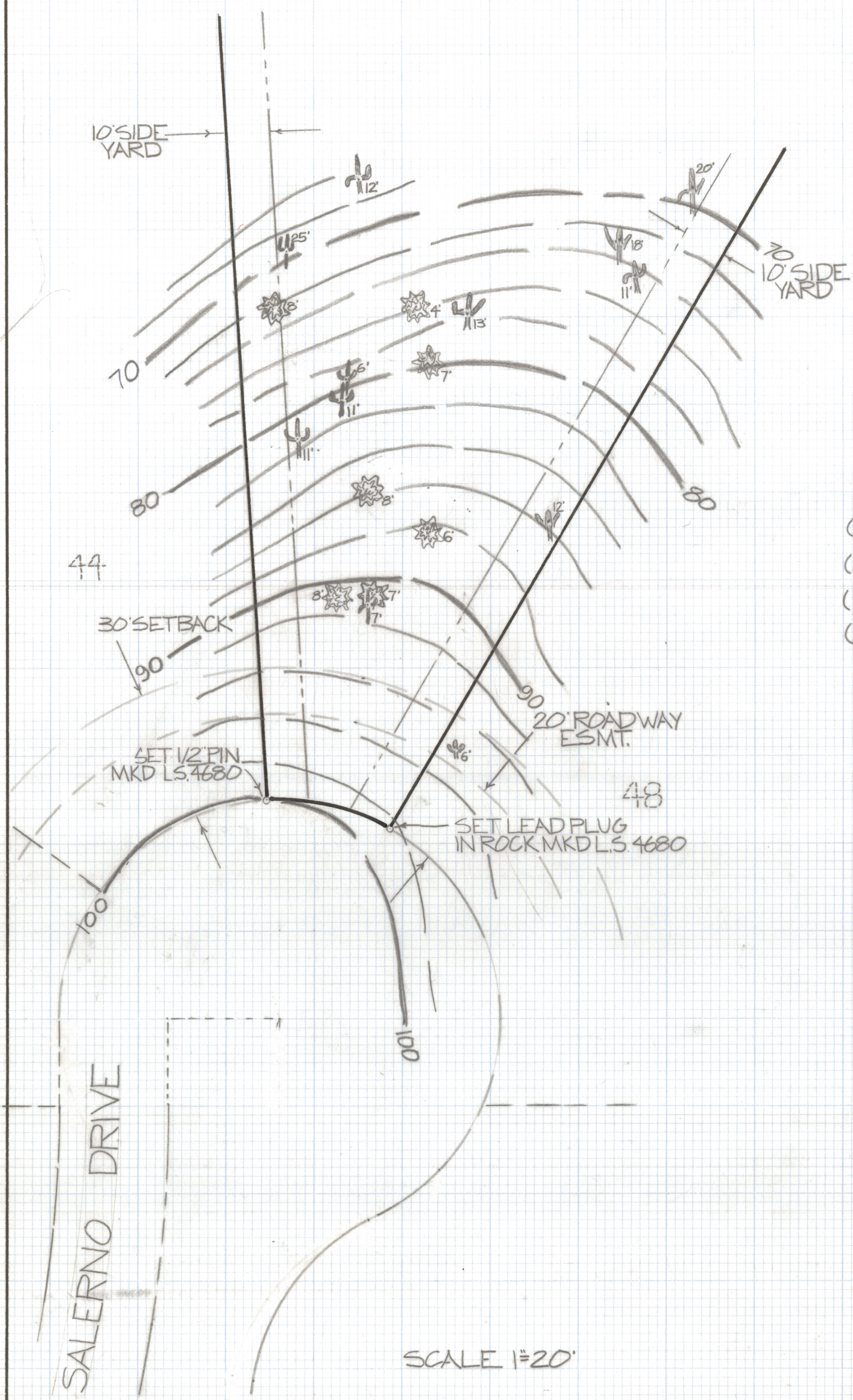
A PORTION OF LOT 46 MOUNTAIN GARDENS ESTATES
RECORDED IN BOOK 17 OF MAPS AND PLATS AT PAGE
59 IN THE OFFICE OF THE PIMA COUNTY RECORDER
PIMA COUNTY ARIZONA



SCALE 1"=20'



SCALE 1"=100'



SCALE 1"=20'

NOTES

- (1) CONTOUR INTERVAL 2 FEET
- (2) ~~12'~~ 12' - INDICATES PALO VERDE TREE AND ITS HEIGHT
- (3) 30' - INDICATES SAHUARO CACTUS AND ITS HEIGHT
- (4) BENCH MARK 100' TOP OF PIN SOUTHWEST CORNER LOT 46



ROBERT F. MELLEN
REGISTERED LAND SURVEYOR
TUCSON, ARIZONA
JOB # 83-24