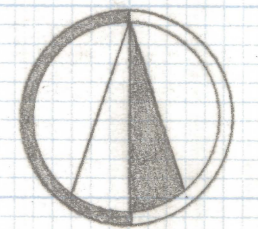
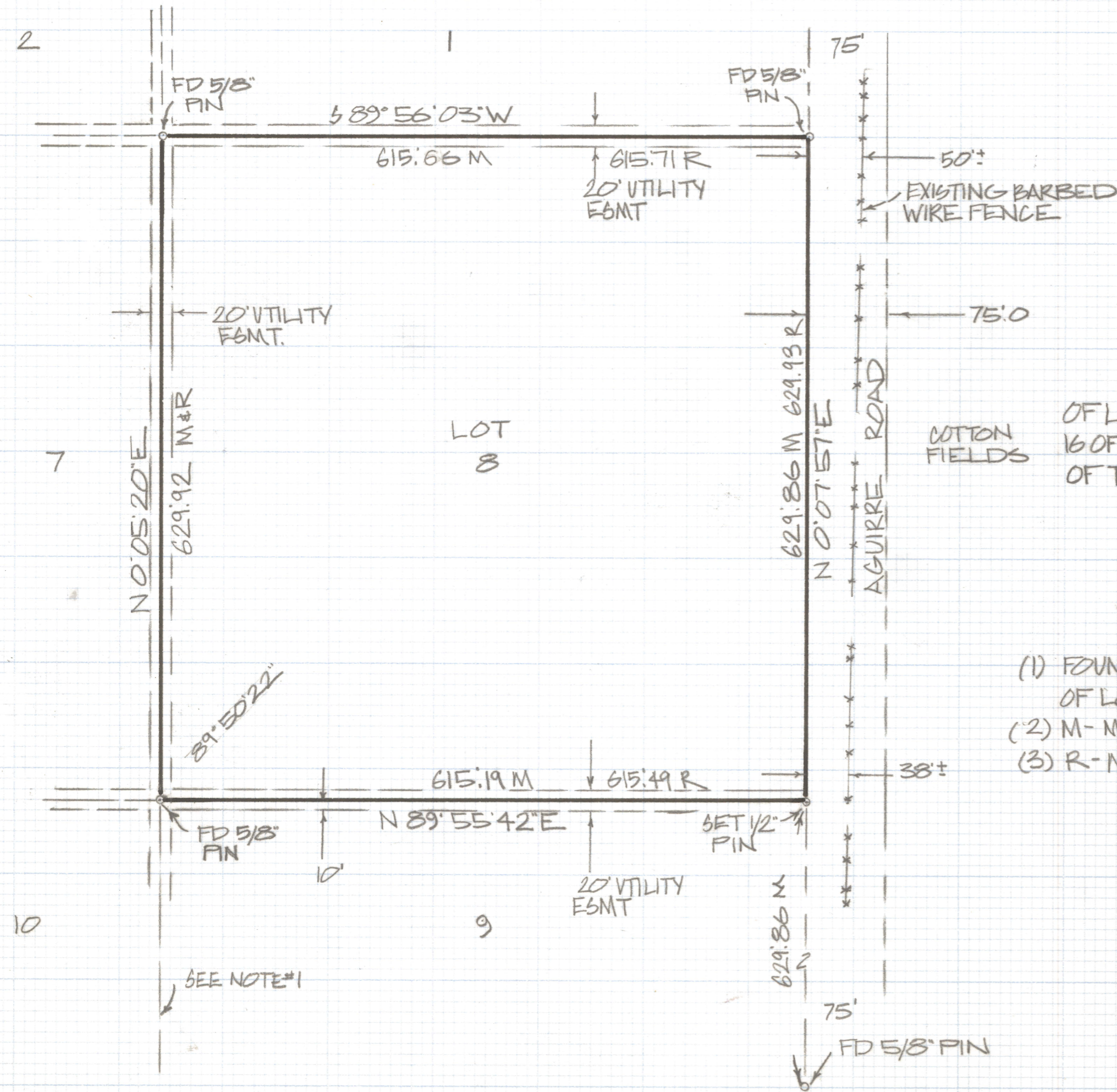


# **DISCLAIMER:**

**This unrecorded Record of Survey was donated to the City of Tucson. The City of Tucson provides this data for your personal use "as is." Additionally, the City of Tucson provides this information with the understanding that it is not guaranteed to be accurate, correct or complete and conclusions drawn from such information are the responsibility of the user.**



SCALE 1"=100'



### RESULTS OF SURVEY

OF LOT 8 MANVILLE ESTATES RECORDED IN BOOK 16 OF MAPS AND PLATS AT PAGE 5A IN THE OFFICE OF THE PINA COUNTY RECORDER PINA COUNTY ARIZONA

### NOTES

- (1) FOUND ALL PINS ON THIS LINE EXCEPT THE N.W. COR OF LOT 1 (SEE SUBDIVISION PLAT ENCLOSED)
- (2) M- MEASURED
- (3) R- MAP RECORD



ROBERT F. MELLEN  
 REGISTERED LAND SURVEYOR  
 TUCSON, ARIZONA  
 JOB # 8345