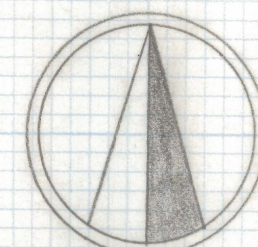


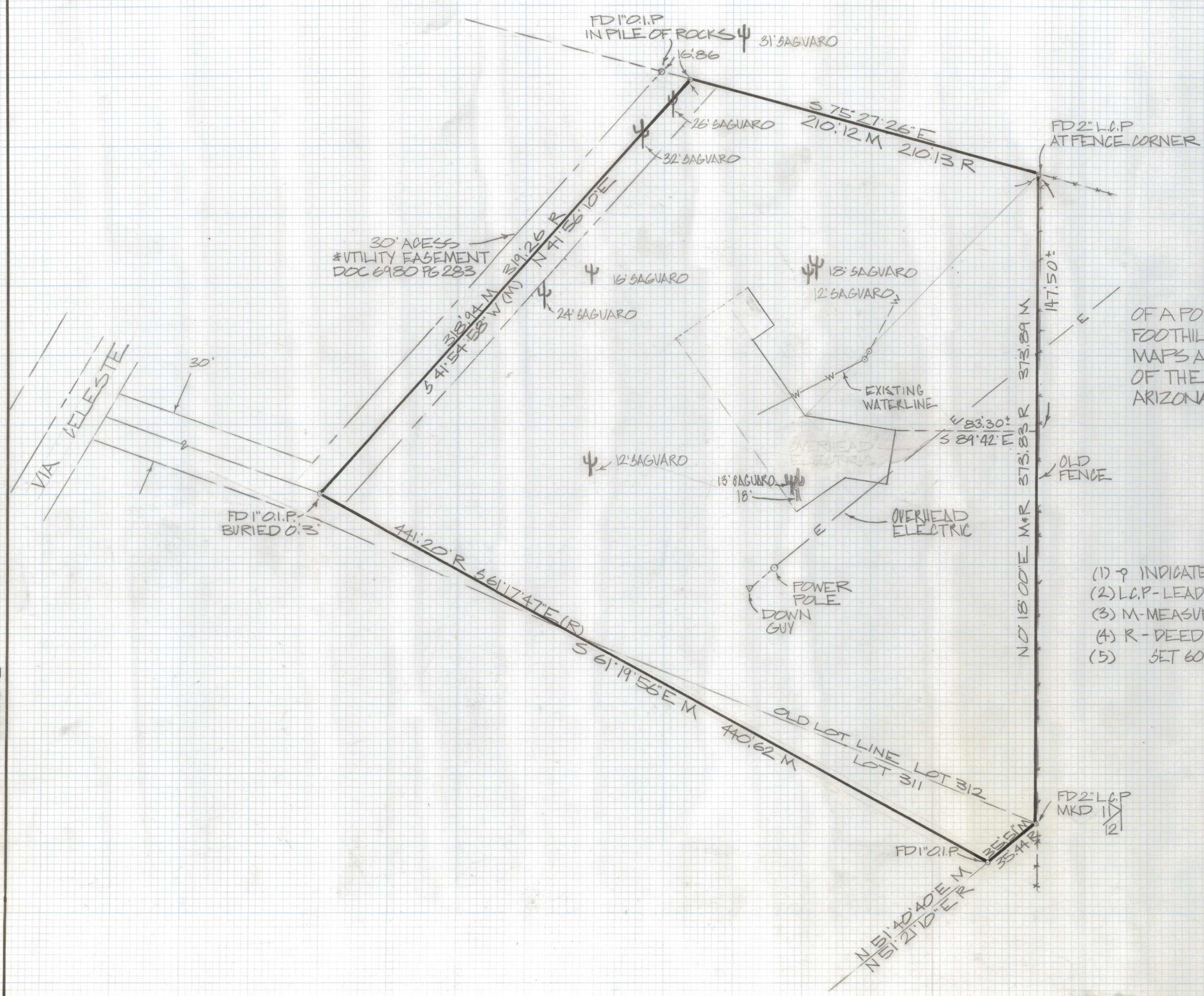
# **DISCLAIMER:**

**This unrecorded Record of Survey was donated to the City of Tucson. The City of Tucson provides this data for your personal use "as is." Additionally, the City of Tucson provides this information with the understanding that it is not guaranteed to be accurate, correct or complete and conclusions drawn from such information are the responsibility of the user.**





SCALE 1"=40'



### RESULTS OF SURVEY

OF A PORTION OF LOTS 311 AND 312 CATALINA  
FOOTHILLS ESTATES #3 RECORDED IN BOOK 9 OF  
MAPS AND PLATS AT PAGE 93 IN THE OFFICE  
OF THE PIMA COUNTY RECORDER PIMA COUNTY  
ARIZONA

### NOTES

- (1) ♡ INDICATES SET 1/2" PIN MKD L.S. 4680 UNLESS NOTED
- (2) L.C.P. - LEAD CAPPED PIPE
- (3) M - MEASURED
- (4) R - DEED RECORD
- (5) SET 60 D NAILS ON NORTH AND WEST LINES



ROBERT F. MELLEN  
REGISTERED LAND SURVEYOR  
TUCSON, ARIZONA  
JOB # 83-46

REVISED 2-8-84

Z-2020-448

Z-2020-448