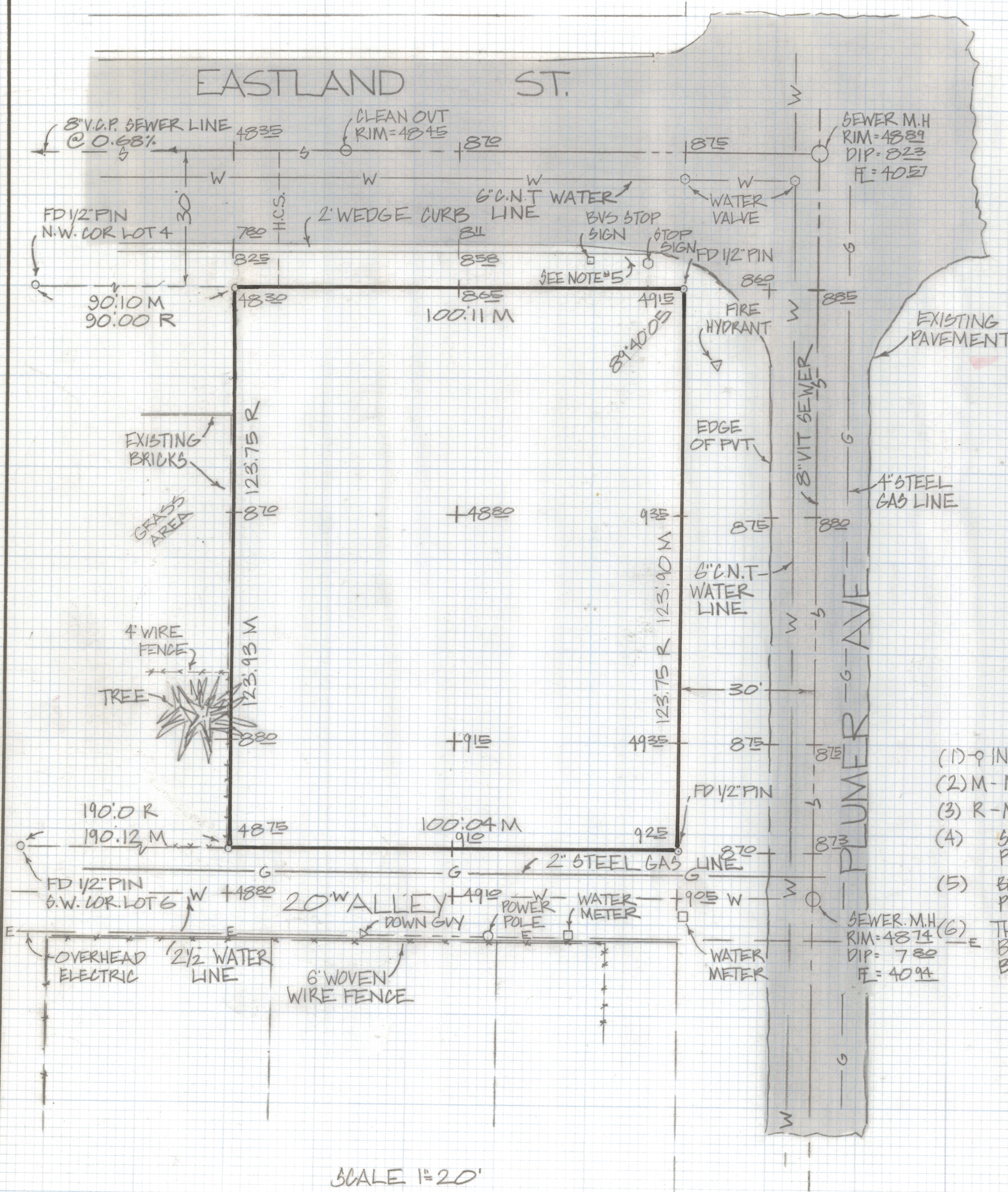
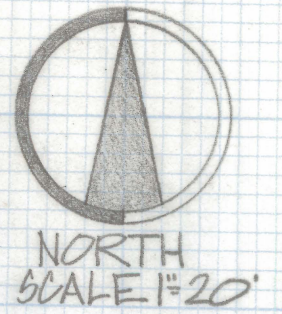


# **DISCLAIMER:**

**This unrecorded Record of Survey was donated to the City of Tucson. The City of Tucson provides this data for your personal use "as is." Additionally, the City of Tucson provides this information with the understanding that it is not guaranteed to be accurate, correct or complete and conclusions drawn from such information are the responsibility of the user.**



**NOTES**

- (1) ◊ INDICATES SET 1/2" PIN MKD L.S. 4680 UNLESS NOTED
- (2) M - MEASURED
- (3) R - MAP RECORD
- (4) STREET DATA PLAN N° I-64-48 SHEET 2 OF 7 PIMA COUNTY ARIZONA
- (5) BENCH MARK 48.90 TOP OF CURB NEAR N.E. CORNER PROPERTY ELEV 48.90 PLAN I-64-48
- (6) THERE ARE UNDERGROUND UTILITIES IN THE AREA BEFORE DIGGING OR IF DESIGN IS CRITICAL CALL BLUE STAKE FOR ACCURATE LOCATION 792-2211

**RESULTS OF SURVEY**

OF LOTS 1 AND 2, AND THE EAST 10 FEET OF LOT 3 BLOCK 27 COUNTRY CLUB MANOR RECORDED IN BOOK 5 OF MAPS AND PLATS AT PAGE 24 IN THE OFFICE OF THE PIMA COUNTY RECORDER PIMA COUNTY ARIZONA



ROBERT F. MELLEN  
REGISTERED LAND SURVEYOR  
TUCSON, ARIZONA  
JOB # 83-47