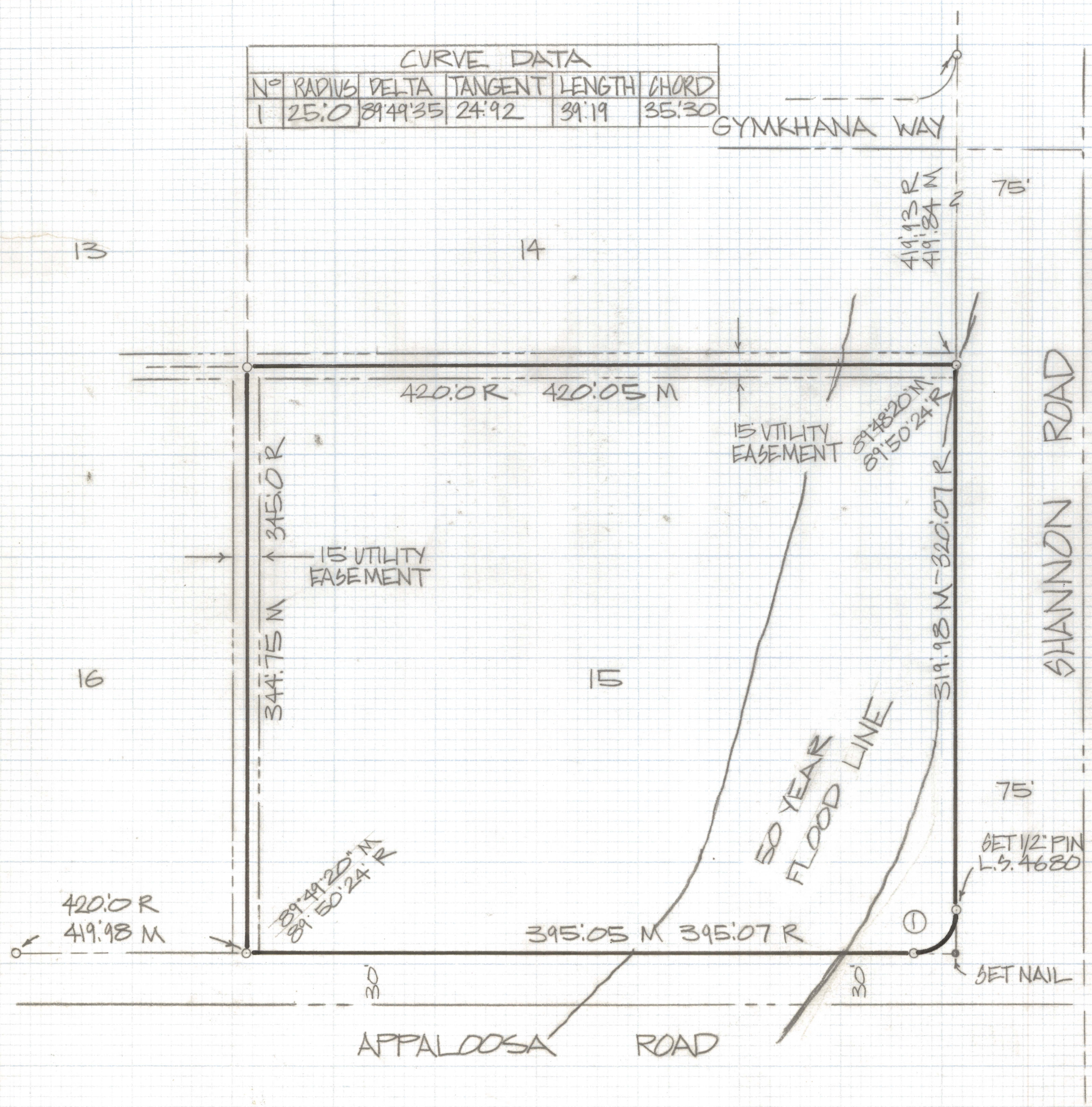


DISCLAIMER:

This unrecorded Record of Survey was donated to the City of Tucson. The City of Tucson provides this data for your personal use "as is." Additionally, the City of Tucson provides this information with the understanding that it is not guaranteed to be accurate, correct or complete and conclusions drawn from such information are the responsibility of the user.

| CURVE DATA | | | | | |
|------------|--------|----------|---------|--------|-------|
| N° | RADIUS | DELTA | TANGENT | LENGTH | CHORD |
| 1 | 25:0 | 89:49:35 | 24:92 | 39:19 | 35:30 |



RESULTS OF SURVEY

OF LOT 15 RANCHITOS PALOS VERDES RECORDED IN BOOK 23 OF MAPS AND PLATS AT PAGE 22 IN THE OFFICE OF THE PINA COUNTY RECORDER PINA COUNTY ARIZONA

NOTES

- (1) ◉ INDICATES FOUND ALUMINUM CAPPED PIN MKD L.S. 4785 UNLESS NOTED
- (2) M - MEASURED
- (3) R - MAP RECORD



ROBERT F. MELLEN
REGISTERED LAND SURVEYOR
TUCSON, ARIZONA
JOB # 83-48