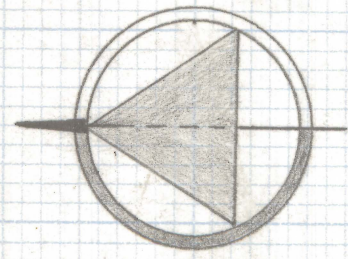
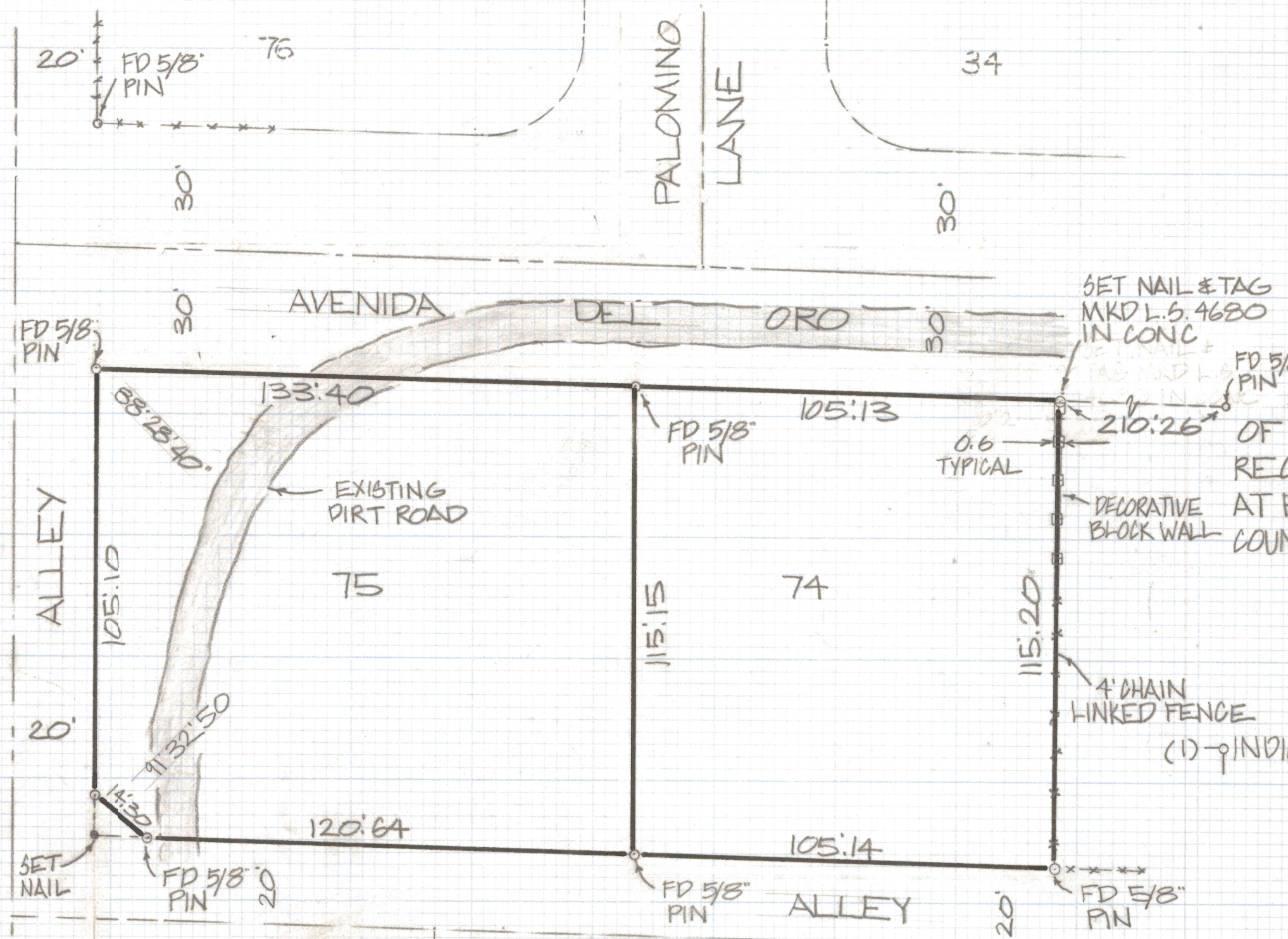


DISCLAIMER:

This unrecorded Record of Survey was donated to the City of Tucson. The City of Tucson provides this data for your personal use "as is." Additionally, the City of Tucson provides this information with the understanding that it is not guaranteed to be accurate, correct or complete and conclusions drawn from such information are the responsibility of the user.



SCALE 1"=30'



RESULTS OF SURVEY

OF LOTS 74 AND 75 THE LARIAT ESTATES
 RECORDED IN BOOK 14 OF MAPS AND PLATS
 AT PAGE 79 IN THE OFFICE OF THE PIMA
 COUNTY RECORDER PIMA COUNTY ARIZONA

NOTES

(1) - ϕ INDICATES SET 1/2" PIN MKD L.S. 4680 UNLESS NOTED



ROBERT F. MELLEN
 REGISTERED LAND SURVEYOR
 TUCSON, ARIZONA
 JOB # 83-54