

DISCLAIMER:

This unrecorded Record of Survey was donated to the City of Tucson. The City of Tucson provides this data for your personal use "as is." Additionally, the City of Tucson provides this information with the understanding that it is not guaranteed to be accurate, correct or complete and conclusions drawn from such information are the responsibility of the user.

EL CAMINO DEL CERRO

S 89° 57' 45" E 798.43

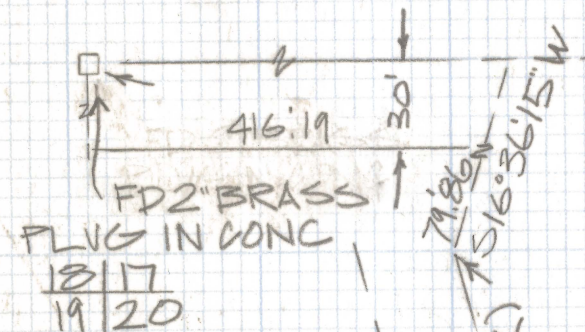
RESULTS OF SURVEY

OF A PORTION OF THE NORTHWEST QUARTER OF THE NORTHWEST QUARTER SECTION 20 TOWNSHIP 13 SOUTH OF RANGE 13 EAST GILA AND SALT RIVER BASE AND MERIDIAN PIMA COUNTY ARIZONA

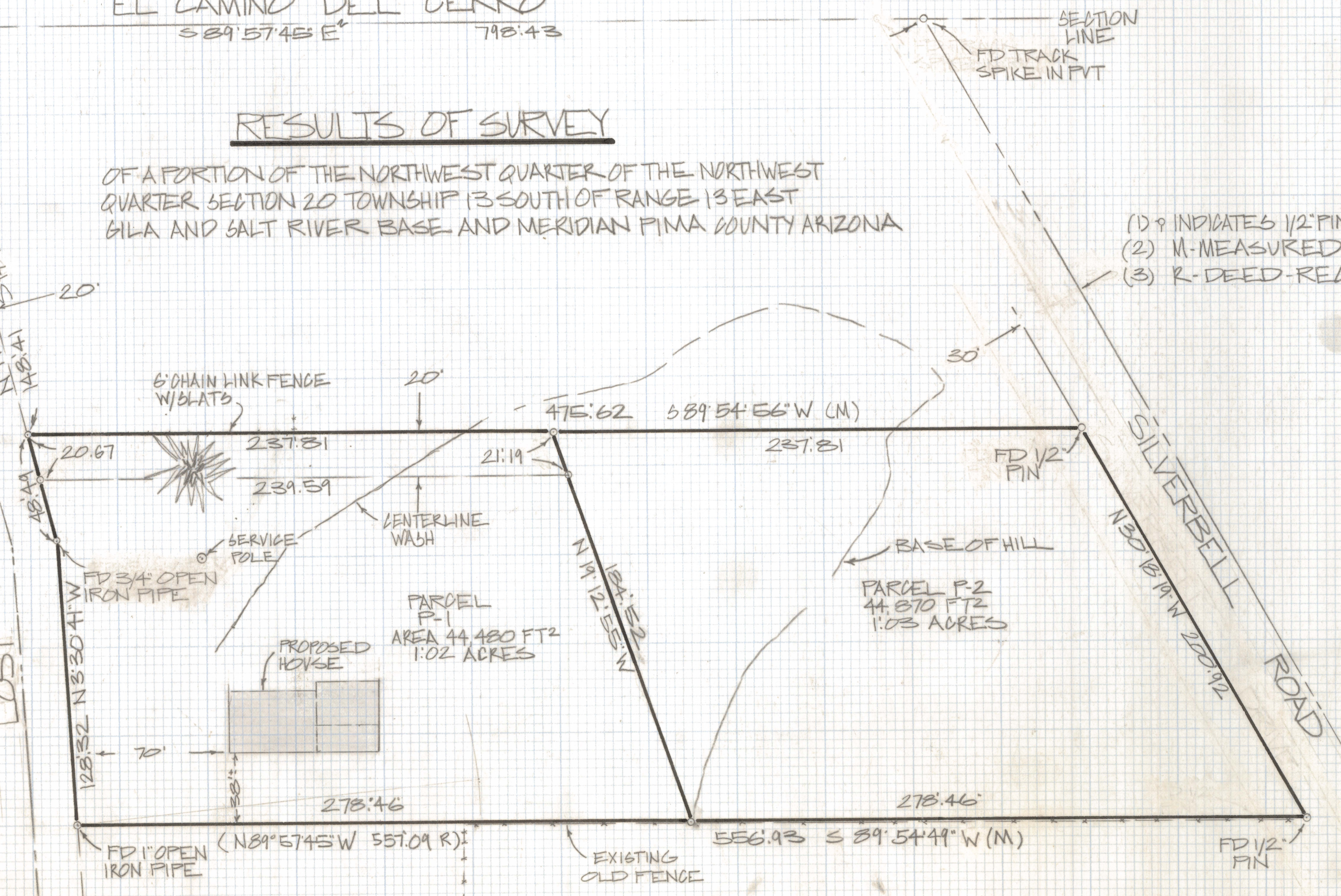
SCALE 1"=40'

NOTES

- (1) ♀ INDICATES 1/2" PIN SET MKD L.S. 4680 UNLESS NOTED
- (2) M-MEASURED
- (3) R-DEED-RECORD



DRIVE
HORIZON
LOST



ROBERT F. MELLEN
REGISTERED LAND SURVEYOR
TUCSON, ARIZONA
JOB# 83-63