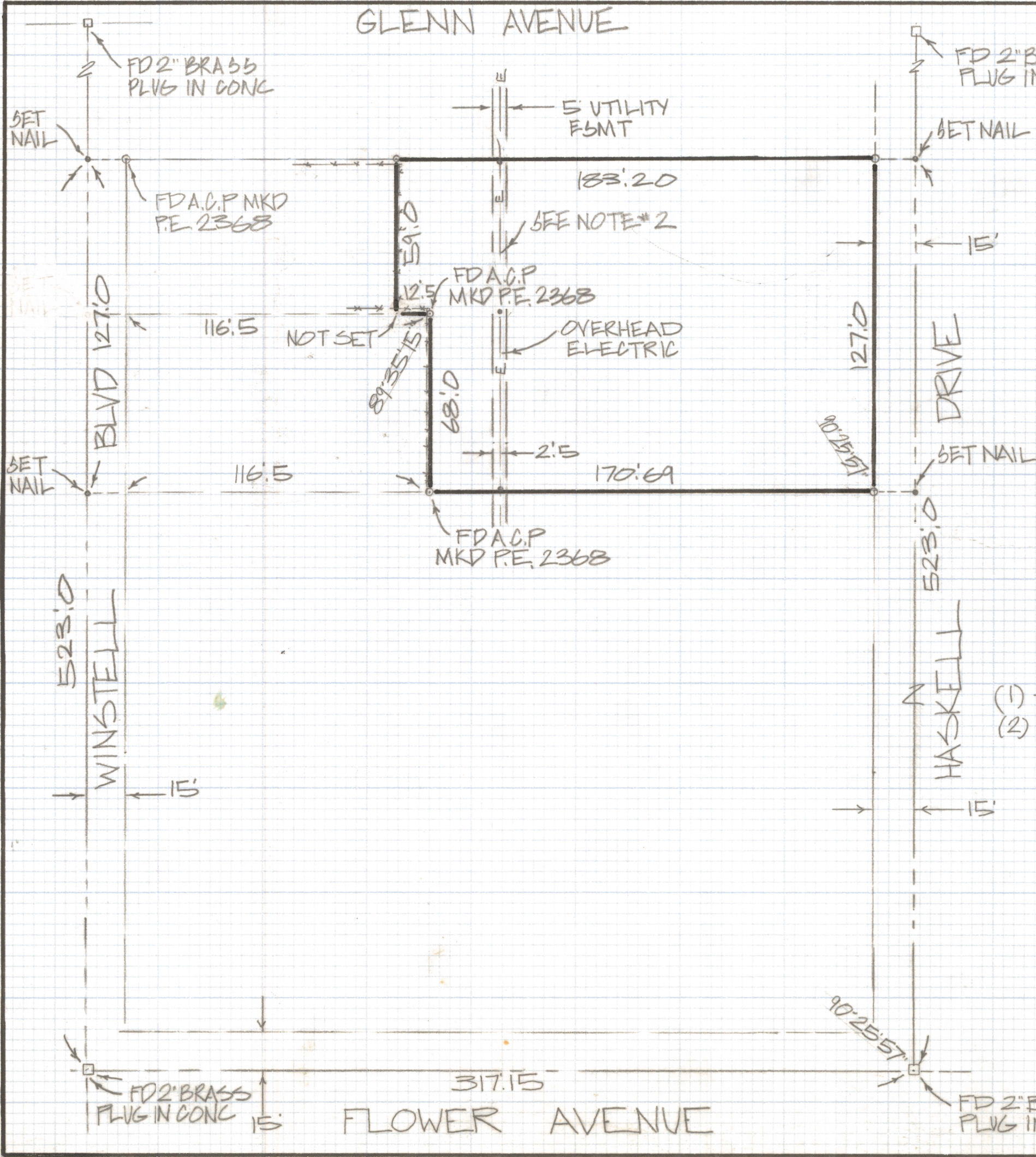


DISCLAIMER:

This unrecorded Record of Survey was donated to the City of Tucson. The City of Tucson provides this data for your personal use "as is." Additionally, the City of Tucson provides this information with the understanding that it is not guaranteed to be accurate, correct or complete and conclusions drawn from such information are the responsibility of the user.

GLENN AVENUE



RESULTS OF SURVEY

A PORTION OF THE NORTH 127.0 FEET OF THE SOUTH 508 FEET LOT 2 BLOCK 2 OF CATALINA FARMS ANNEX RECORDED IN BOOK 4 OF MAPS AND PLATS AT PAGE 35 IN THE OFFICE OF THE PIMA COUNTY RECORDER PIMA COUNTY ARIZONA

NOTES

- (1) - \circ INDICATES SET 1/2" PIN MKD L.S. 4680 UNLESS NOTED
- (2) SET NAILS ON CENTERLINE OF THE 5' FOOT UTILITY EASEMENT 2.5 FEET ON EITHER SIDE OF NAILS



ROBERT F. MELLEN
 REGISTERED LAND SURVEYOR
 TUCSON, ARIZONA
 JOB# 83-73