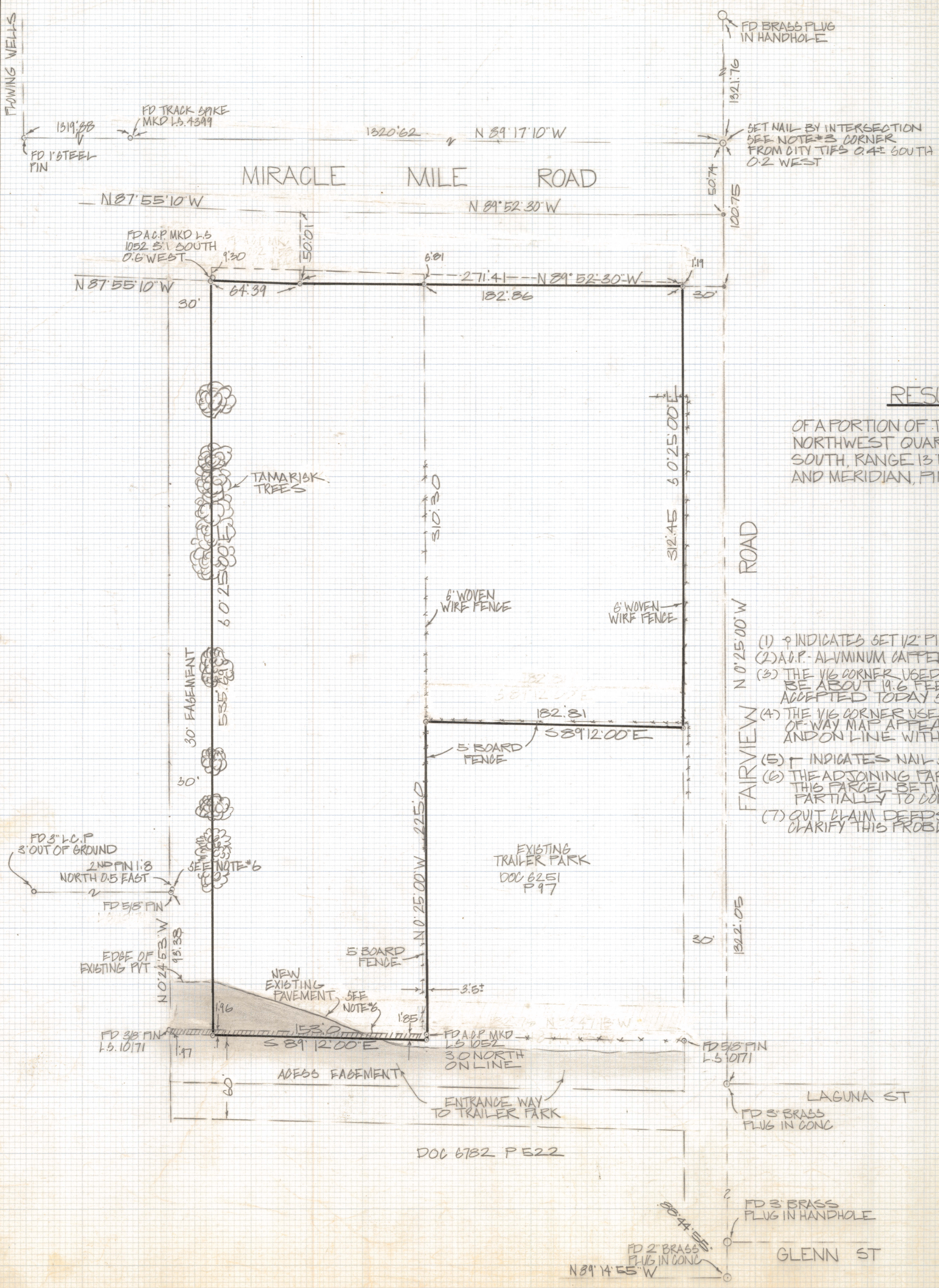
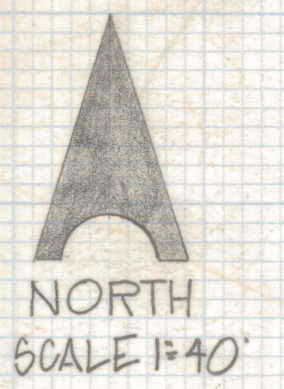


# **DISCLAIMER:**

**This unrecorded Record of Survey was donated to the City of Tucson. The City of Tucson provides this data for your personal use "as is." Additionally, the City of Tucson provides this information with the understanding that it is not guaranteed to be accurate, correct or complete and conclusions drawn from such information are the responsibility of the user.**

FLOWING WELLS



### RESULTS OF SURVEY

OF A PORTION OF THE SOUTHEAST QUARTER OF THE NORTHWEST QUARTER OF SECTION 35 TOWNSHIP 13 SOUTH, RANGE 13 EAST, GILA AND SALT RIVER BASE AND MERIDIAN, PIMA COUNTY, ARIZONA

### NOTES

- (1) ♀ INDICATES SET 1/2" PIN MKD L.S. 4680 UNLESS NOTED
- (2) A.C.P. - ALUMINUM CAPPED PIN
- (3) THE VIG CORNER USED TO DESCRIBE THIS PROPERTY APPEARS TO BE ABOUT 19.6 FEET SOUTH AND 0.3 EAST OF THE CORNER ACCEPTED TODAY SEE STEVENS MAP DATED JAN 1947
- (4) THE VIG CORNER USED ON THE ARIZONA HIGHWAY DEPT. RIGHT-OF-WAY MAP APPEARS TO BE APPROXIMATELY 46 NORTH AND ON LINE WITH THE PRESENT ACCEPTED CORNER
- (5) † INDICATES NAIL SET
- (6) THE ADJOINING PARCEL TO THE SOUTH OVER LAPS THIS PARCEL BETWEEN 1.85 TO 3.65 FEET FIVE PARTIALLY TO CONFLICTING DEEDS
- (7) QUIT CLAIM DEEDS SHOULD BE EXCHANGED TO CLARIFY THIS PROBLEM



ROBERT F. MELLEN  
REGISTERED LAND SURVEYOR  
TUCSON, ARIZONA  
JOB # 83-74