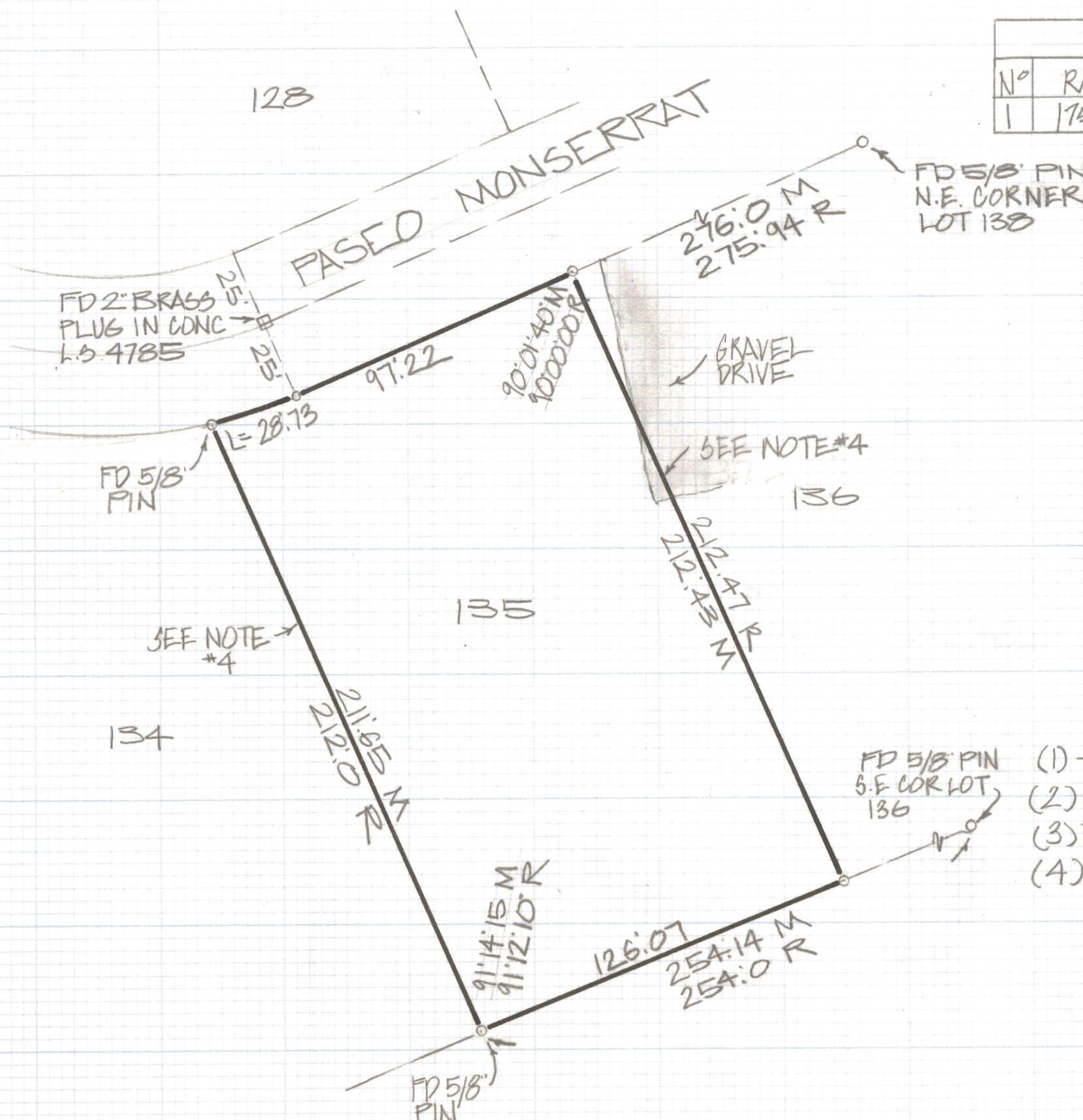
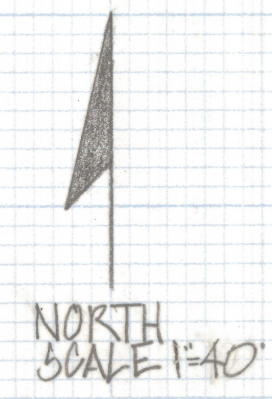


DISCLAIMER:

This unrecorded Record of Survey was donated to the City of Tucson. The City of Tucson provides this data for your personal use "as is." Additionally, the City of Tucson provides this information with the understanding that it is not guaranteed to be accurate, correct or complete and conclusions drawn from such information are the responsibility of the user.

CURVE DATA					
N°	RADIUS	DELTA	LENGTH	TANGENT	CHORD
1	175:0	9:25:01	28.76	14.41	28.73



RESULTS OF SURVEY

OF LOT 135 RANCHO'S DE LA CANADA'S RECORDED IN BOOK 28 OF MAPS AND PLATS AT PAGE 99 IN THE OFFICE OF THE PIMA COUNTY RECORDER PIMA COUNTY ARIZONA

NOTES

- (1) - o INDICATES SET 1/2" PIN MKD L.S. 4680 UNLESS NOTED
- (2) M - MEASURED
- (3) R - MAP RECORD
- (4) SET STAKES ON PROPERTY LINE



ROBERT F. MELLEN
REGISTERED LAND SURVEYOR
TUCSON, ARIZONA
JOB # 83-76