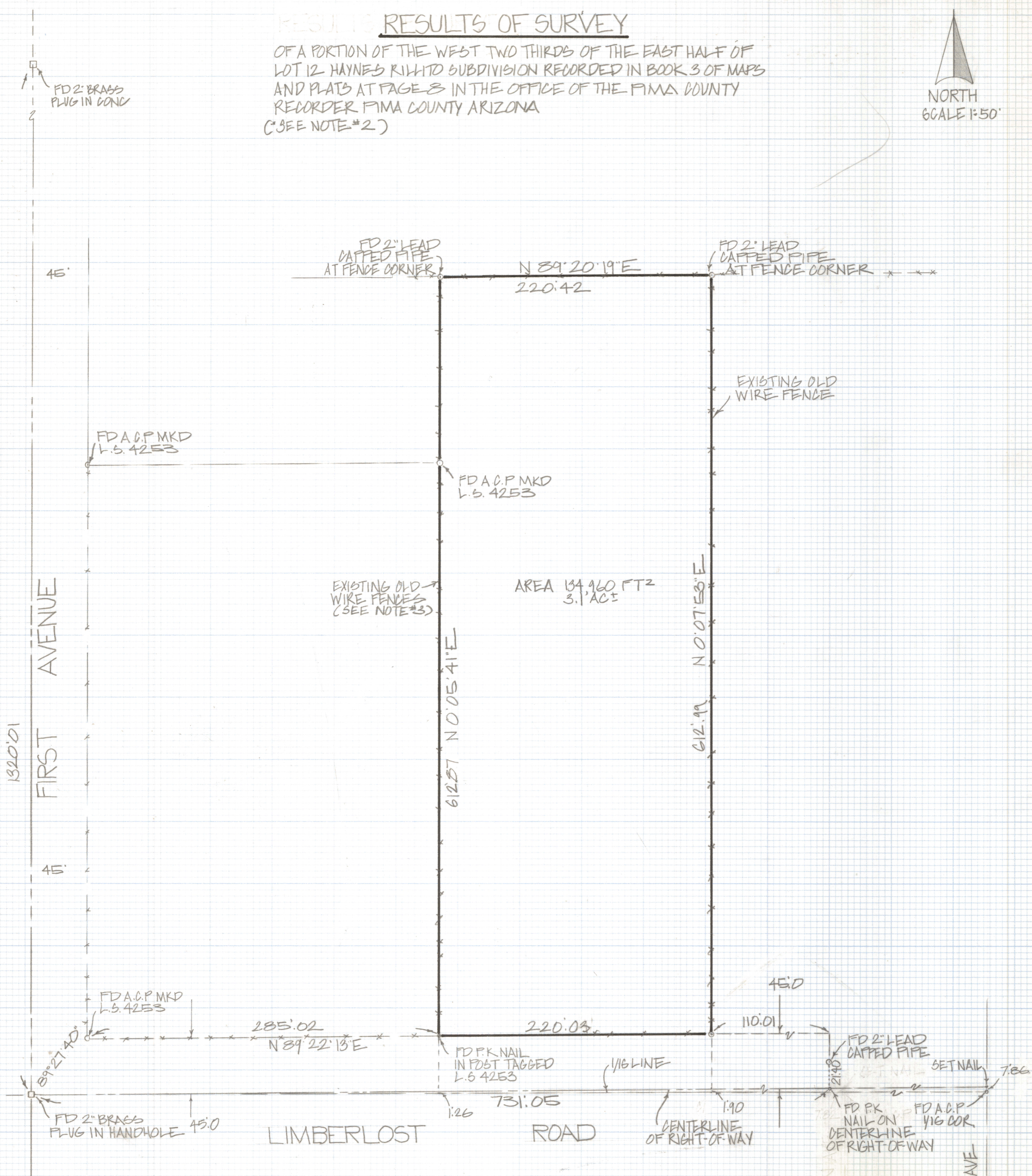
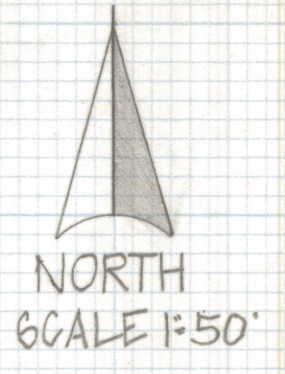


DISCLAIMER:

This unrecorded Record of Survey was donated to the City of Tucson. The City of Tucson provides this data for your personal use "as is." Additionally, the City of Tucson provides this information with the understanding that it is not guaranteed to be accurate, correct or complete and conclusions drawn from such information are the responsibility of the user.

RESULTS OF SURVEY

OF A PORTION OF THE WEST TWO THIRDS OF THE EAST HALF OF LOT 12 HAYNES KILLITO SUBDIVISION RECORDED IN BOOK 3 OF MAPS AND PLATS AT PAGE 8 IN THE OFFICE OF THE PIMA COUNTY RECORDER PIMA COUNTY ARIZONA (SEE NOTE #2)



NOTES

- (1) ♀ INDICATES SET 1/2" FIN MKD L.S. 4680 UNLESS NOTED
- (2) HAYNES KILLITO SUBDIVISION RECORDED BOOK 3 PAGE 8 IS NOT DIMENSIONED OCCUPATION OF FENCES AND OLD CORNERS IN LOTS 11 AND 12 INDICATE THAT THE ORIGINAL CORNERS PROBABLY WERE SET 1320 EAST FROM 1ST AVE
- (3) CONVERSATION WITH OLD RESIDENTS INDICATES THESE OLD FENCES WERE IN PLACE 26 YEARS AGO AND PROBABLY MUCH LONGER



ROBERT F. MELTEN
REGISTERED LAND SURVEYOR
TUCSON, ARIZONA
JOB #82-77