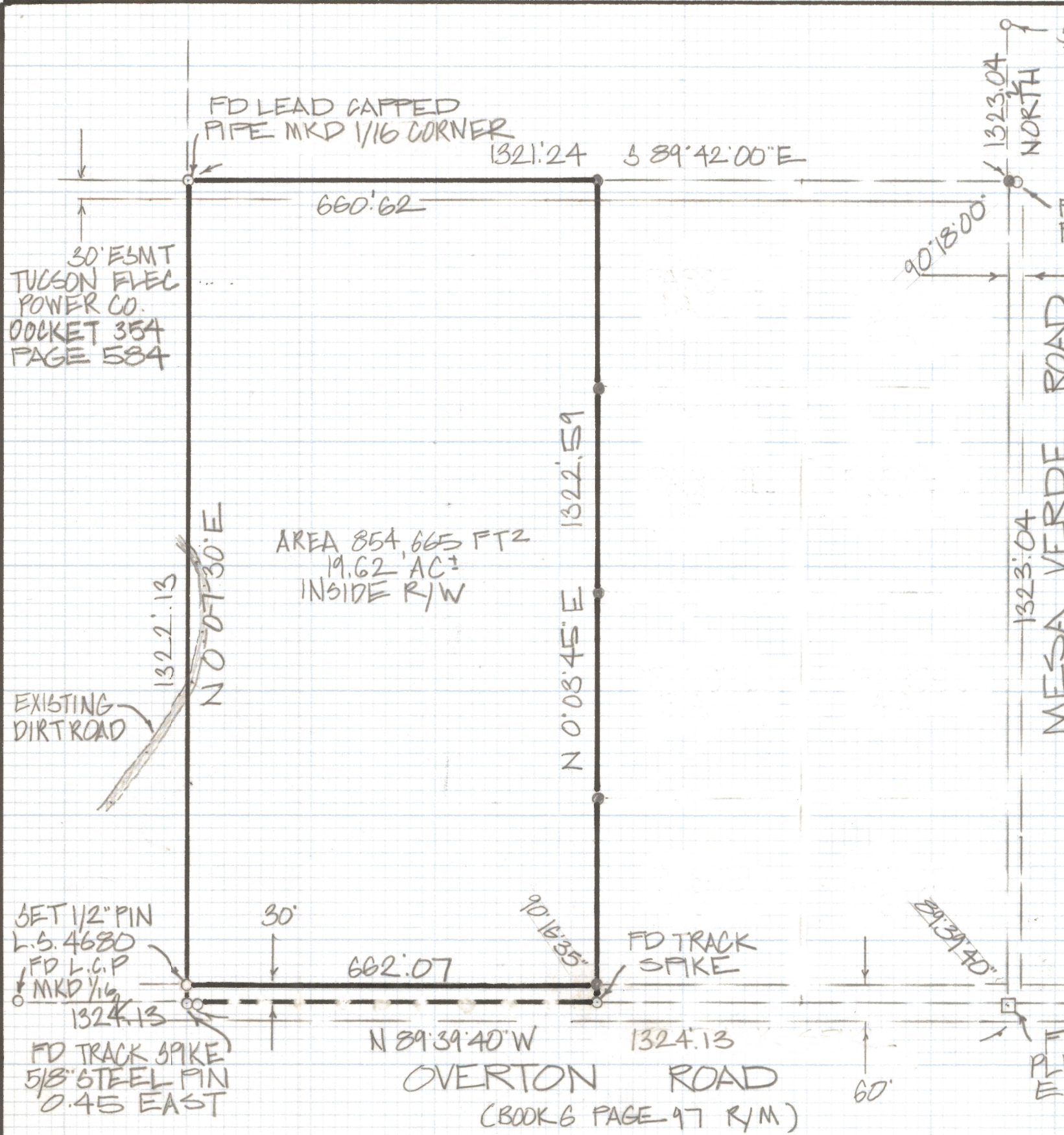


DISCLAIMER:

This unrecorded Record of Survey was donated to the City of Tucson. The City of Tucson provides this data for your personal use "as is." Additionally, the City of Tucson provides this information with the understanding that it is not guaranteed to be accurate, correct or complete and conclusions drawn from such information are the responsibility of the user.



30' ESMT
TUCSON FUEL
POWER CO.
DOCKET 354
PAGE 584

AREA 854,665 FT²
19.62 AC±
INSIDE R/W

MESA VERDE ROAD

OVERTON ROAD
(BOOK 6 PAGE 97 R/M)



RESULTS OF SURVEY

THE WEST HALF OF THE SOUTHEAST QUARTER
OF THE NORTHEAST QUARTER SECTION 20
TOWNSHIP 12 SOUTH OF RANGE 13 EAST GILA
AND SALT RIVER BASE AND MERIDIAN PIMA
COUNTY ARIZONA

NOTES

- (1) • INDICATES FOUND 1/2" PIN MKD L.S. 4680 UNLESS NOTED
- (2) SEE JOB# 71-107, 73-54
- (3) BASIS OF BEARINGS NORTH FOR EAST LINE OF SECTION 20



ROBERT F. MELLEN
REGISTERED LAND SURVEYOR
TUCSON, ARIZONA
JOB# 83-82