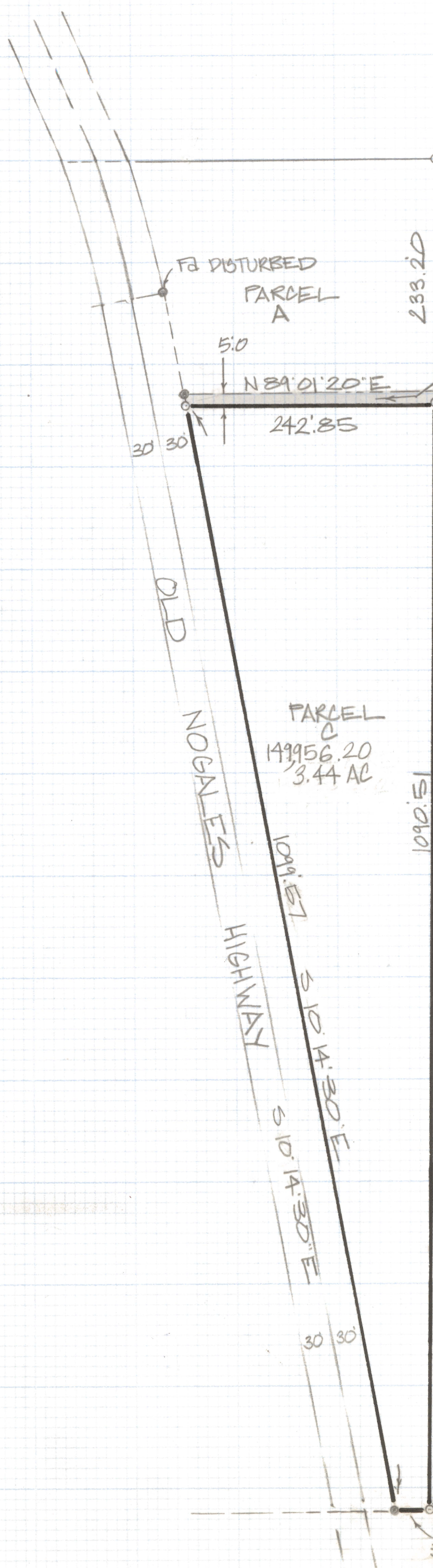
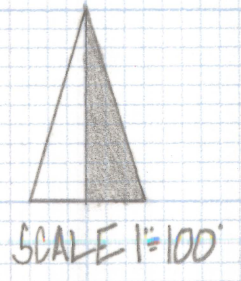


DISCLAIMER:

This unrecorded Record of Survey was donated to the City of Tucson. The City of Tucson provides this data for your personal use "as is." Additionally, the City of Tucson provides this information with the understanding that it is not guaranteed to be accurate, correct or complete and conclusions drawn from such information are the responsibility of the user.



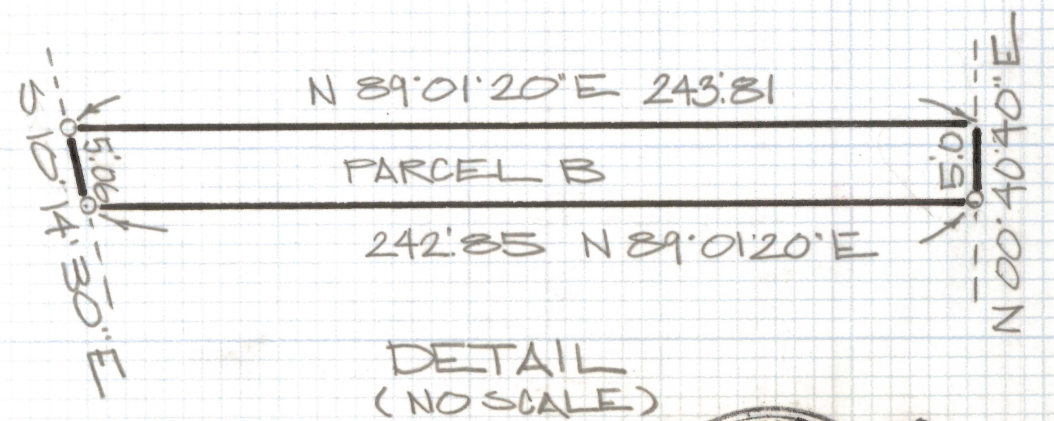
PARCEL B
(SEE DETAIL)

RESULTS OF SURVEY

OF A PORTION OF THE WEST HALF OF THE SOUTHWEST QUARTER OF THE SOUTHEAST QUARTER OF SECTION 6 TOWNSHIP 16 SOUTH OF RANGE 14 EAST GILA AND SALT RIVER BASE AND MERIDIAN PIMA COUNTY ARIZONA

NOTES

- (1) ♀ INDICATES SET 1/2" PIN MKD L.S. 4680 UNLESS NOTED
- (2) ♂ INDICATES FOUND 1/2" PIN MKD L.S. 4680 UNLESS NOTED
- (3) SEE JOB# 76-146
- (4) BASIS OF BEARING OLD NOGALES HIGHWAY PER "SKY LINE RANCHOS RECORDED BOOK 10 PAGE 73"



ROBERT F. MELLEN
REGISTERED LAND SURVEYING
TUCSON, ARIZONA
JOB# 83-90