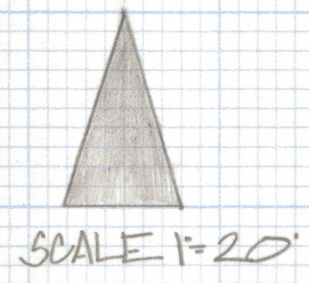
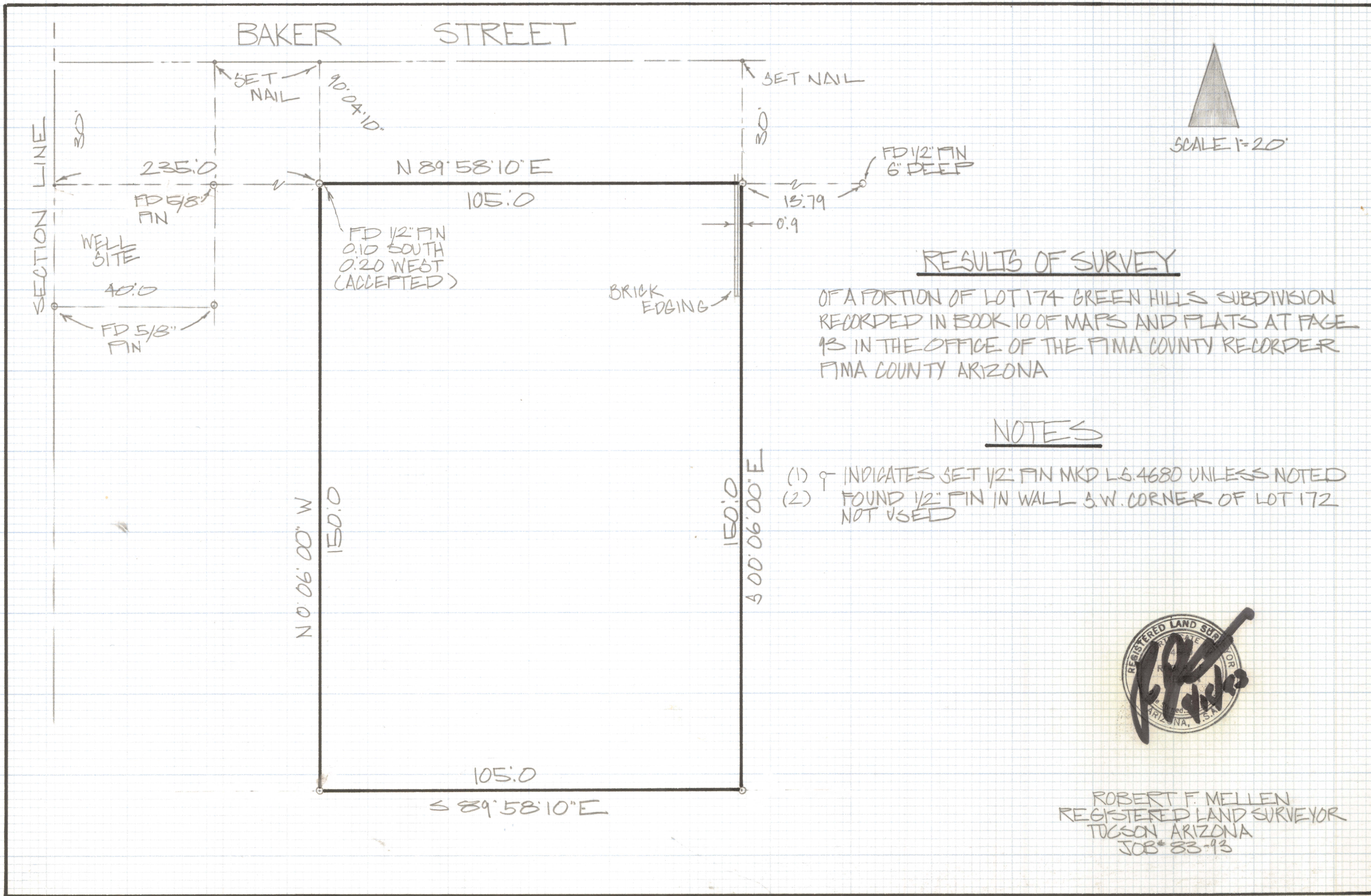


DISCLAIMER:

This unrecorded Record of Survey was donated to the City of Tucson. The City of Tucson provides this data for your personal use "as is." Additionally, the City of Tucson provides this information with the understanding that it is not guaranteed to be accurate, correct or complete and conclusions drawn from such information are the responsibility of the user.



RESULTS OF SURVEY

OF A PORTION OF LOT 174 GREEN HILLS SUBDIVISION
 RECORDED IN BOOK 10 OF MAPS AND PLATS AT PAGE
 93 IN THE OFFICE OF THE PIMA COUNTY RECORDER
 PIMA COUNTY ARIZONA

NOTES

- (1) ♀ INDICATES SET 1/2" PIN MKD L.S. 4680 UNLESS NOTED
- (2) FOUND 1/2" PIN IN WALL S.W. CORNER OF LOT 172 NOT USED



ROBERT F. MELLEN
 REGISTERED LAND SURVEYOR
 TUCSON ARIZONA
 JOB# 83-93