

DISCLAIMER:

This unrecorded Record of Survey was donated to the City of Tucson. The City of Tucson provides this data for your personal use "as is." Additionally, the City of Tucson provides this information with the understanding that it is not guaranteed to be accurate, correct or complete and conclusions drawn from such information are the responsibility of the user.

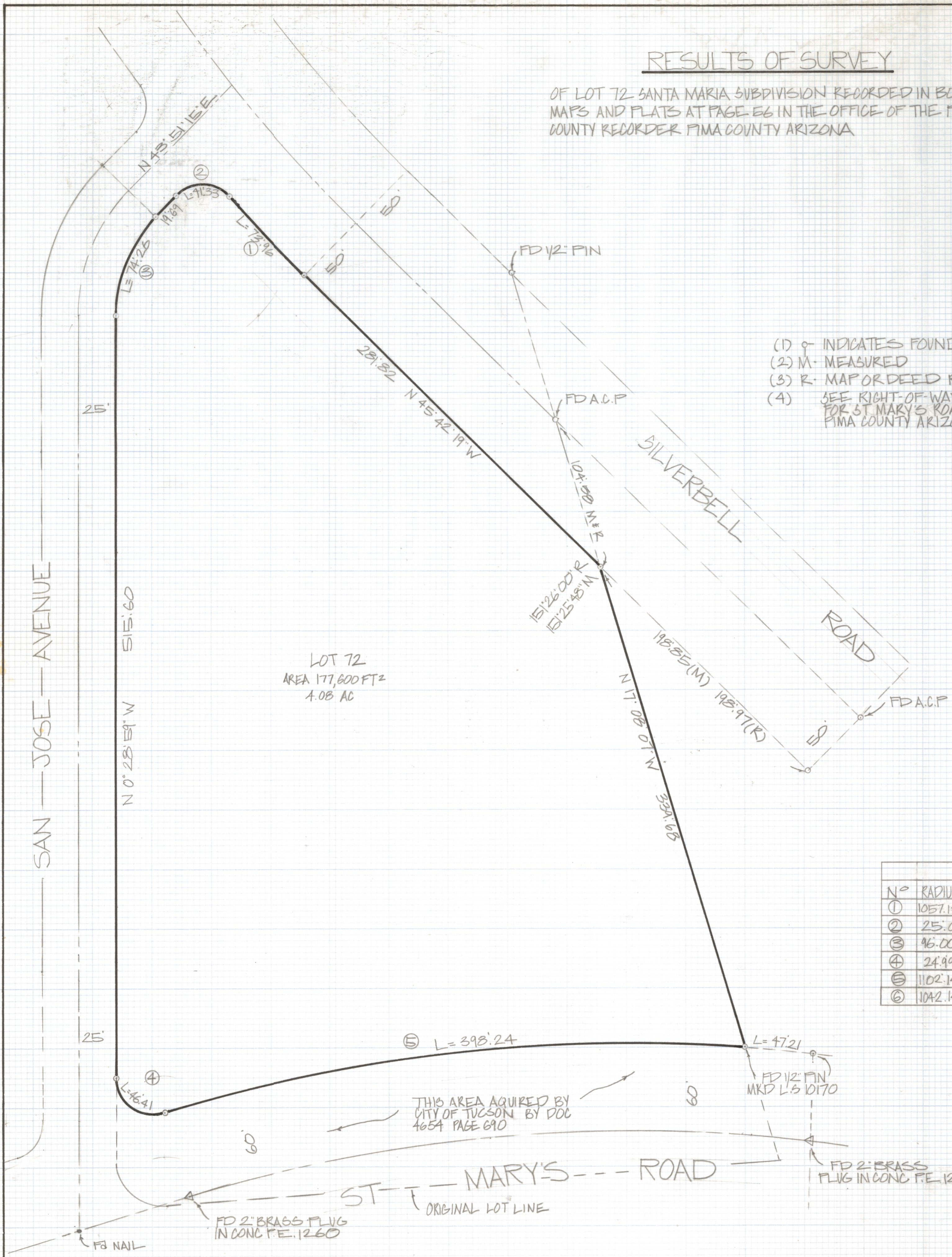
RESULTS OF SURVEY

OF LOT 72 SANTA MARIA SUBDIVISION RECORDED IN BOOK 10 OF
MAPS AND PLATS AT PAGE 66 IN THE OFFICE OF THE PIMA
COUNTY RECORDER PIMA COUNTY ARIZONA



NOTES

- (1) \circ INDICATES FOUND 1/2" PIN MKD FE-5968 UNLESS NOTED
- (2) M. MEASURED
- (3) R. MAP OR DEED RECORD
- (4) SEE RIGHT-OF-WAY DEDICATION PLAT BOOK 20 PAGE 63 MAPS AND PLATS FOR ST. MARY'S ROAD AND SILVERBELL ROAD PLAN N-R-69-6 SHEET 1 OF 2 PIMA COUNTY ARIZONA



LOT 72
AREA 177,600 FT²
4.08 AC

CURVE DATA					
N ^o	RADIUS	DELTA	TANGENT	LENGTH	CHORD
①	1057.13	4°00'30"	36.99	73.96	73.94
②	25.05	94°26'54"	27.08	41.30	36.78
③	96.00	44°20'14"	39.12	74.29	72.45
④	24.99	106°25'17"	33.42	46.42	40.03
⑤	1102.14	20°42'11"	201.32	398.24	396.08
⑥	1042.14	23°11'03"	213.77	421.69	418.82



ROBERT F. MELLEN
REGISTERED LAND SURVEYOR
TUCSON, ARIZONA
JOB # 83-95