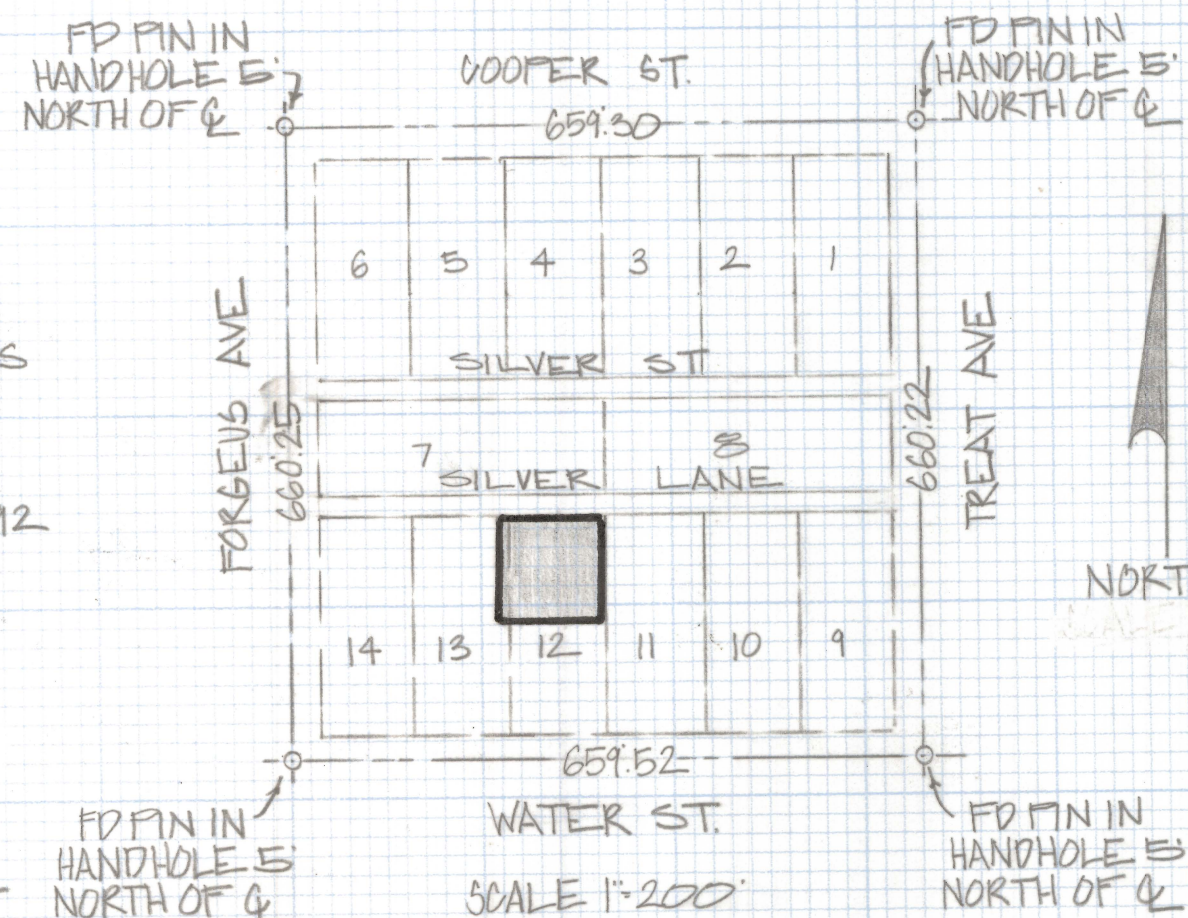
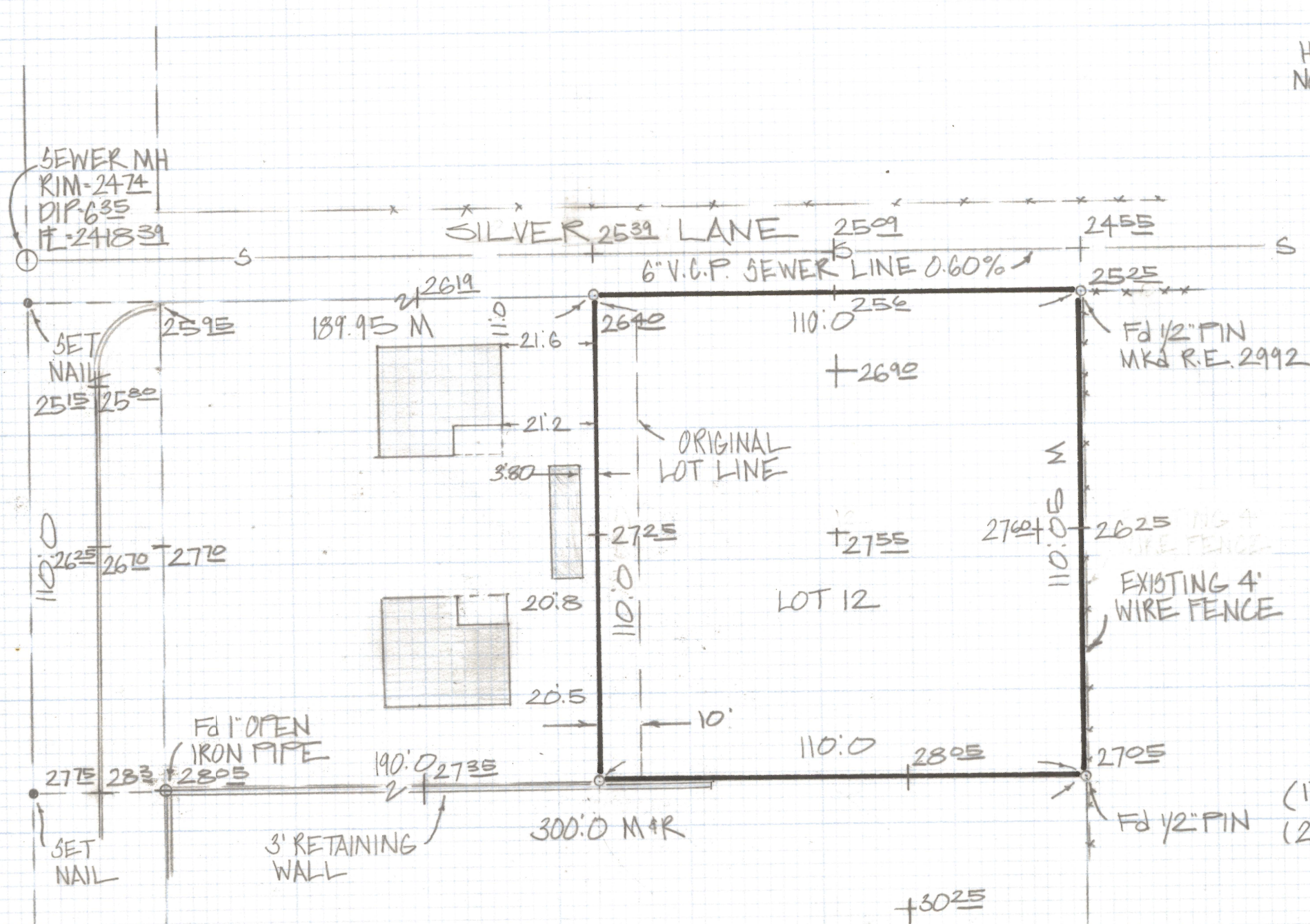


DISCLAIMER:

This unrecorded Record of Survey was donated to the City of Tucson. The City of Tucson provides this data for your personal use "as is." Additionally, the City of Tucson provides this information with the understanding that it is not guaranteed to be accurate, correct or complete and conclusions drawn from such information are the responsibility of the user.



NOTES

- (1) -p INDICATES SET 1/2" PIN MKD L.S. 4680 UNLESS NOTED
- (2) SEWER DATA PER PLAN N° I-656 PIMA COUNTY ARIZONA

RESULTS OF SURVEY

OF A PORTION OF LOTS 12 AND 13 OF GRANT ROAD PARK SUBDIVISION RECORDED IN BOOK 6 OF MAPS AND PLATS AT PAGE 63 IN THE OFFICE OF THE PIMA COUNTY RECORDER PIMA COUNTY ARIZONA



ROBERT F. MELLEN
REGISTERED LAND SURVEYOR
TUCSON, ARIZONA
JOB #83-96