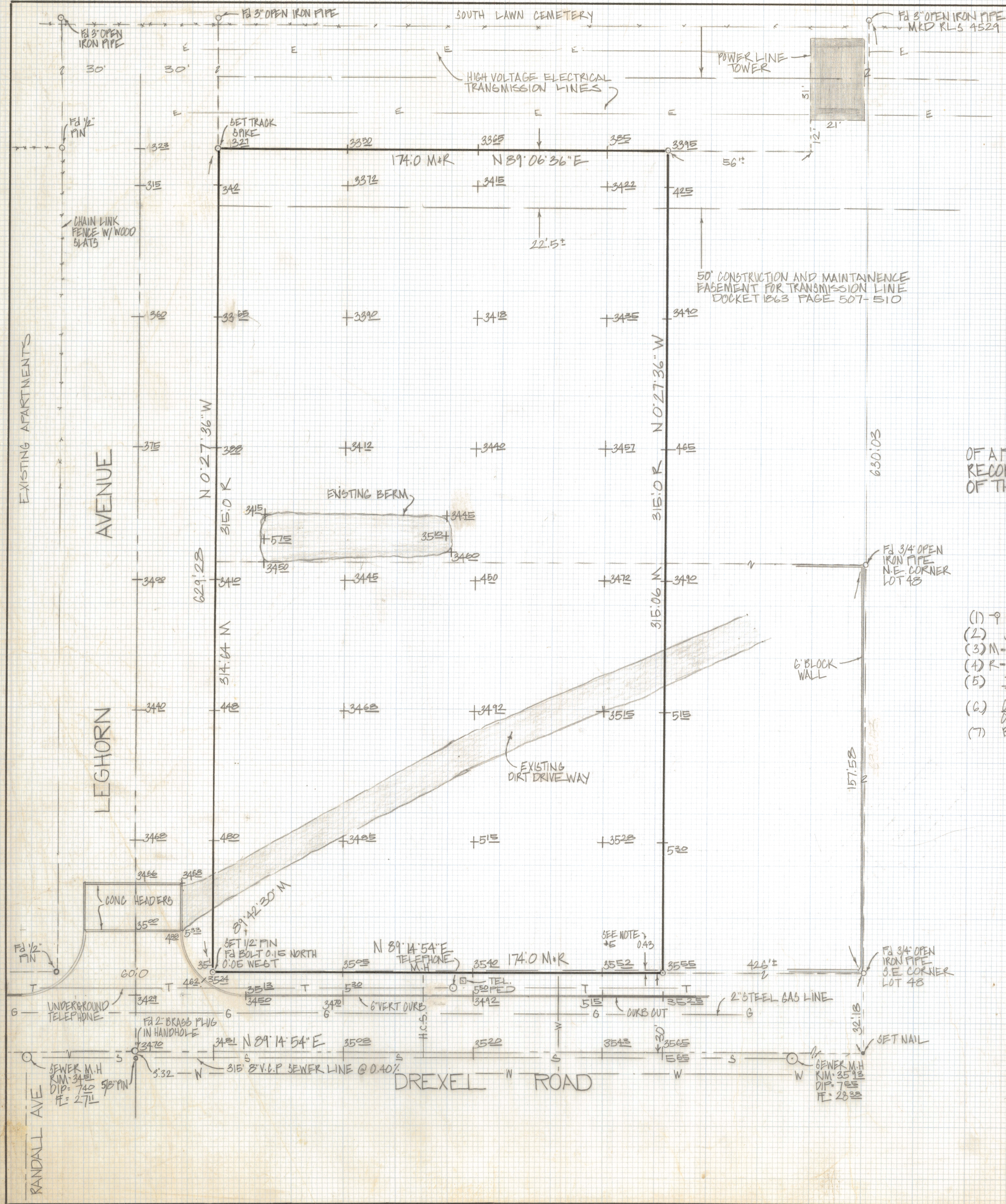
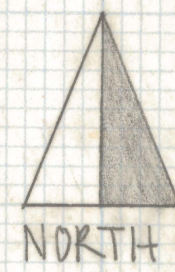


DISCLAIMER:

This unrecorded Record of Survey was donated to the City of Tucson. The City of Tucson provides this data for your personal use "as is." Additionally, the City of Tucson provides this information with the understanding that it is not guaranteed to be accurate, correct or complete and conclusions drawn from such information are the responsibility of the user.



RESULTS OF SURVEY

OF A PORTION OF LOTS 47 AND 48 JUDGE EMERY POULTRY COLONY
 RECORDED IN BOOK 5 OF MAPS AND PLATS AT PAGE 20 IN THE OFFICE
 OF THE PIMA COUNTY RECORDER PIMA COUNTY ARIZONA

NOTES

- (1) ♀ INDICATES SET 1/2" PIN MKD L.S. 4680 UNLESS NOTED
- (2) SEWER DATA PIMA COUNTY ARIZONA PER PLAN N° I-73-51 SHEET 4 OF 5
- (3) M - MEASURED
- (4) R - DEED OR MAP RECORD
- (5) IT APPEARS THAT THE RIGHT-OF-WAY MONUMENTATION OF DREXEL ROAD IS IN CONTACT WITH THIS SUBDIVISION
- (6) CAUTION UNDERGROUND UTILITIES IN THE AREA IF DESIGN IS CRITICAL AND BEFORE DIGGING CALL BLUE-STAKE 712-2211
- (7) BASIS OF BEARING DREXEL ROAD N 89° 14' 54" E PER RANDALL SQUARE BOOK 33 OF MAPS AND PLATS AT PAGE 81



ROBERT F. MELLEN
 REGISTERED LAND SURVEYOR
 TUCSON, ARIZONA
 JOB # 83-112