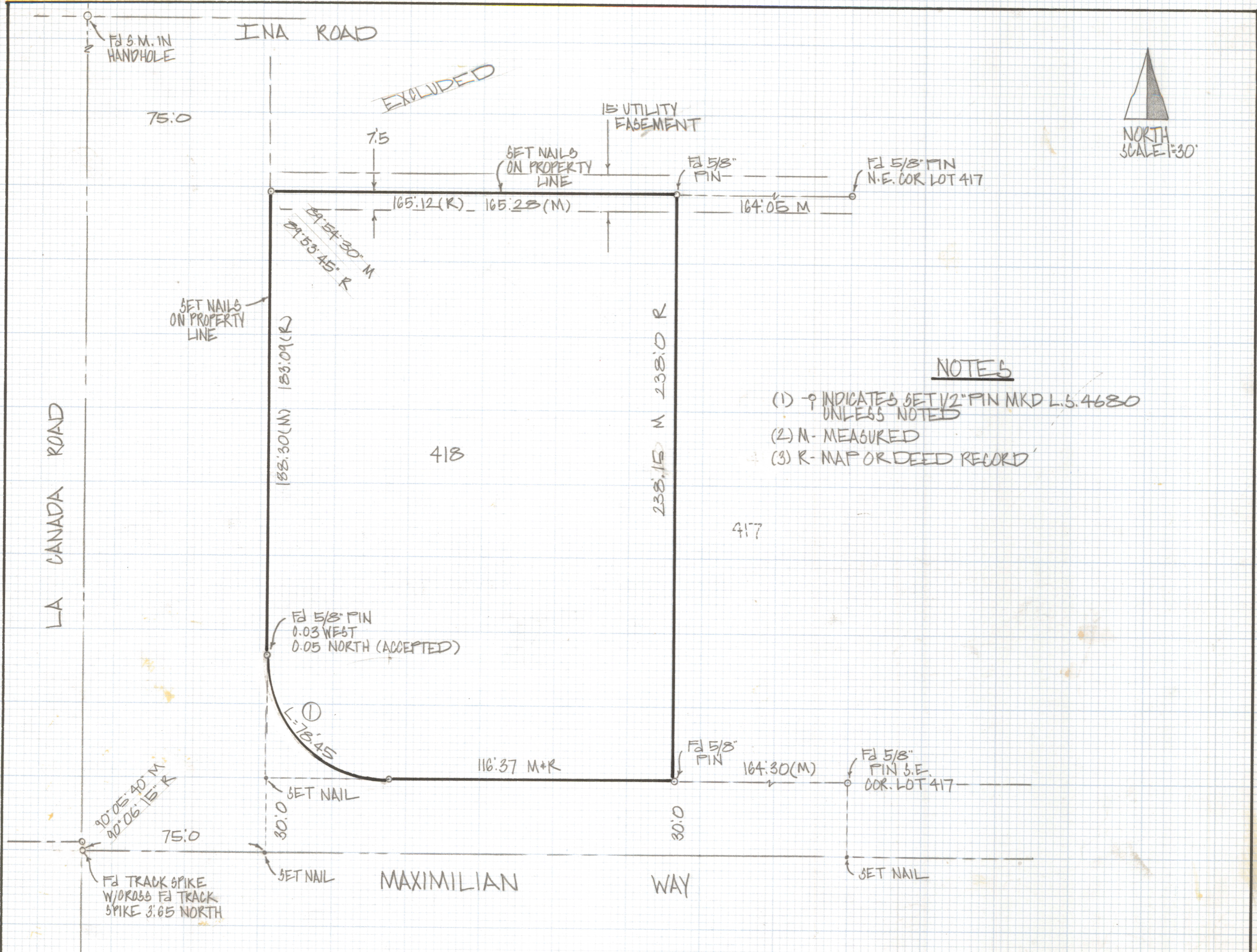
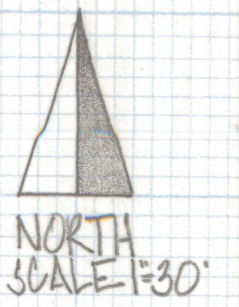


# **DISCLAIMER:**

**This unrecorded Record of Survey was donated to the City of Tucson. The City of Tucson provides this data for your personal use "as is." Additionally, the City of Tucson provides this information with the understanding that it is not guaranteed to be accurate, correct or complete and conclusions drawn from such information are the responsibility of the user.**





NOTES

- (1) -  $\phi$  INDICATES SET 1/2" PIN MKD L.S. 4680 UNLESS NOTED
- (2) M - MEASURED
- (3) R - MAP OR DEED RECORD

RESULTS OF SURVEY

OF LOT 418 CASAS ADOBES ESTATES RECORDED IN BOOK 12 OF MAPS AND PLATS AT PAGE 2 IN THE OFFICE OF THE PIMA COUNTY RECORDER PIMA COUNTY ARIZONA

CURVE DATA					
N <sup>o</sup>	RADIUS	DELTA	TANGENT	LENGTH	CHORD
1	70.0	89°54'20"	49.91	78.45	70.64



ROBERT F. MELLEN  
REGISTERED LAND SURVEYOR  
TUCSON, ARIZONA  
JOB# 83-123