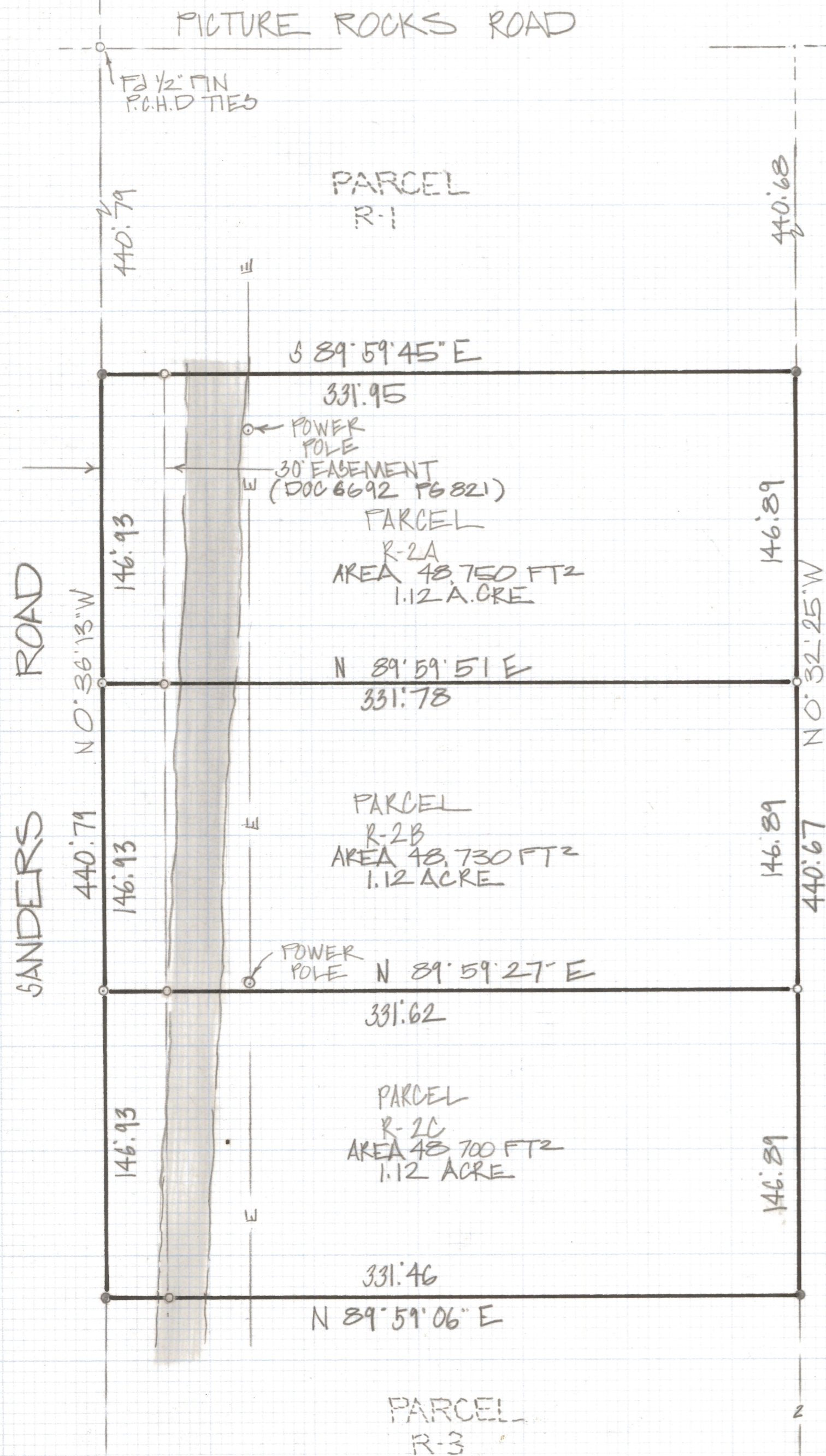
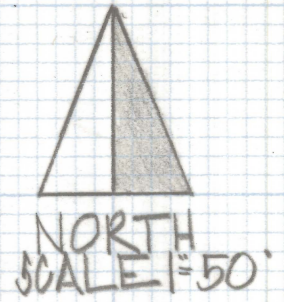


DISCLAIMER:

This unrecorded Record of Survey was donated to the City of Tucson. The City of Tucson provides this data for your personal use "as is." Additionally, the City of Tucson provides this information with the understanding that it is not guaranteed to be accurate, correct or complete and conclusions drawn from such information are the responsibility of the user.



RESULTS OF SURVEY

OF A PORTION OF THE WEST HALF OF THE WEST HALF OF THE NORTHWEST QUARTER OF THE SOUTHWEST QUARTER SECTION 4 TOWNSHIP 13 SOUTH OF RANGE 11 EAST GILA AND SALT RIVER BASE AND MERIDIAN PIMA COUNTY ARIZONA

NOTES

- (1) ♀ INDICATES SET 1/2" PIN MKD L.S. 4680 UNLESS NOTED
- (2) ♀ INDICATES FOUND 1/2" PIN MKD L.S. 4680 FROM JOB # 81-116 UNLESS NOTED



ROBERT F. MELLEN
REGISTERED LAND SURVEYOR
TUCSON ARIZONA
JOB # 83-129