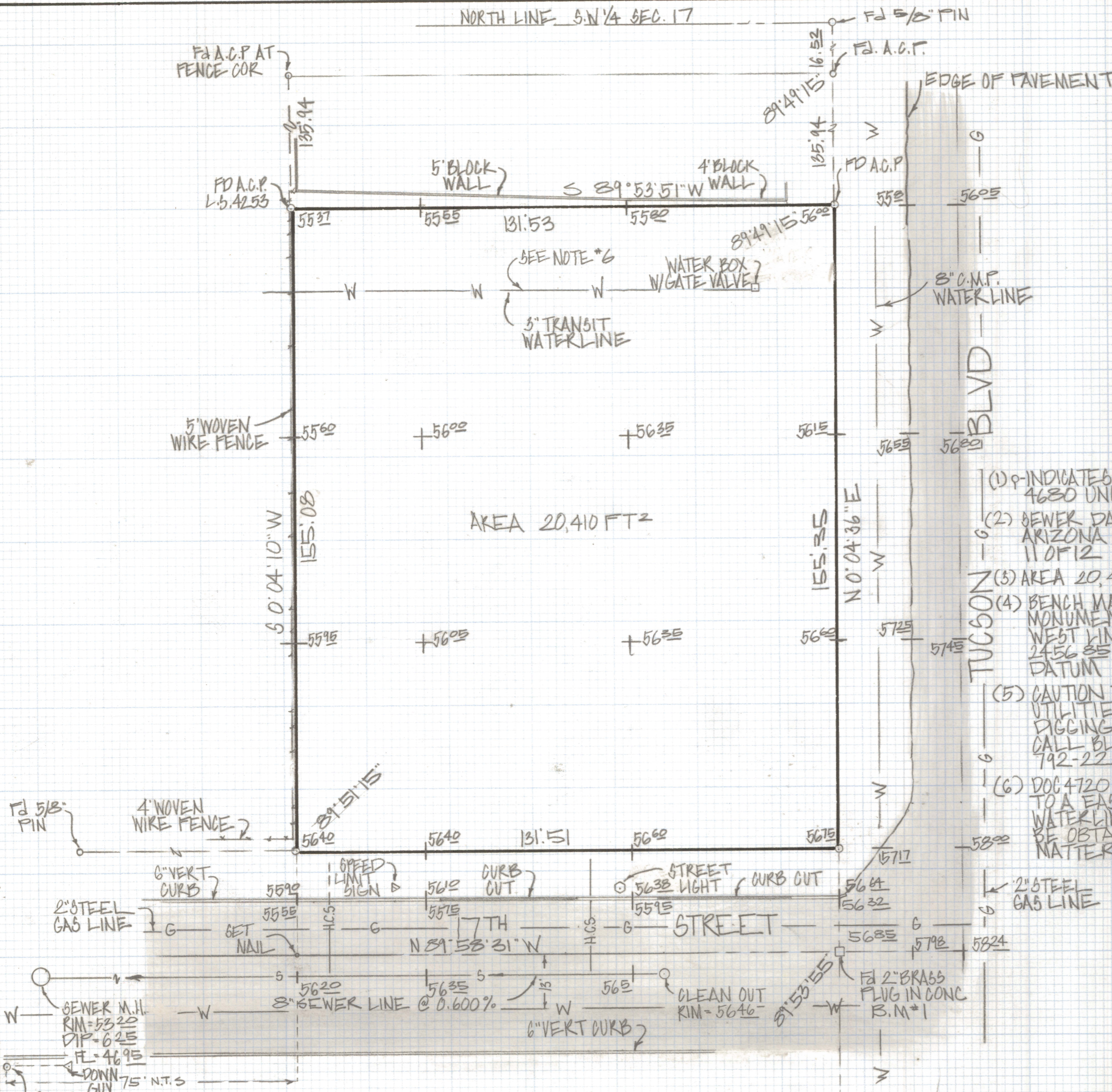


DISCLAIMER:

This unrecorded Record of Survey was donated to the City of Tucson. The City of Tucson provides this data for your personal use "as is." Additionally, the City of Tucson provides this information with the understanding that it is not guaranteed to be accurate, correct or complete and conclusions drawn from such information are the responsibility of the user.

NORTH LINE S.N. 1/4 SEC. 17



NOTES

- (1) P-INDICATES SET 1/2" PIN MKD L.S. 4680 UNLESS NOTED
- (2) SEWER DATA PER PIMA COUNTY ARIZONA PLAN NO I-620 SHEET 11 OF 12
- (3) AREA 20,410 FT²
- (4) BENCH MARK TOP OF 2" BRASS FLUG AT MONUMENT LINE OF 17TH STREET AND WEST LINE OF TUCSON BLVD ELEVATION 2456.85 PIMA COUNTY WASTEWATER DATUM
- (5) CAUTION THERE ARE UNDERGROUND UTILITIES IN THE AREA BEFORE DIGGING OR IF DESIGN IS CRITICAL CALL BLUE STAKE FOR LOCATION 792-2211
- (6) DOC 4720 PAGE 806-807 MAY PERTAIN TO A EASEMENT CONCERNING THIS WATERLINE CUT CLAIM DEEDS SHOULD BE OBTAINED TO CLEAR UP THIS MATTER

RESULTS OF SURVEY

OF A PORTION OF THE NORTHEAST QUARTER OF THE NORTHEAST QUARTER OF THE SOUTH WEST QUARTER SECTION 17 TOWNSHIP 14 SOUTH OF RANGE 14 EAST GILA AND MERIDIAN PIMA COUNTY ARIZONA



ROBERT F. MELLEN
REGISTERED LAND SURVEYOR
TUCSON, ARIZONA
JOB # 83-137