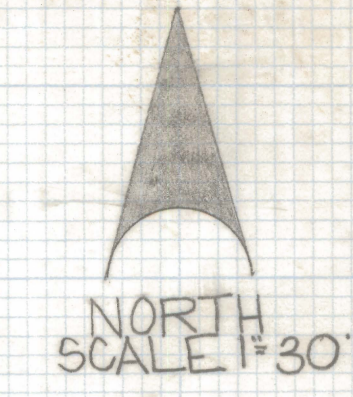
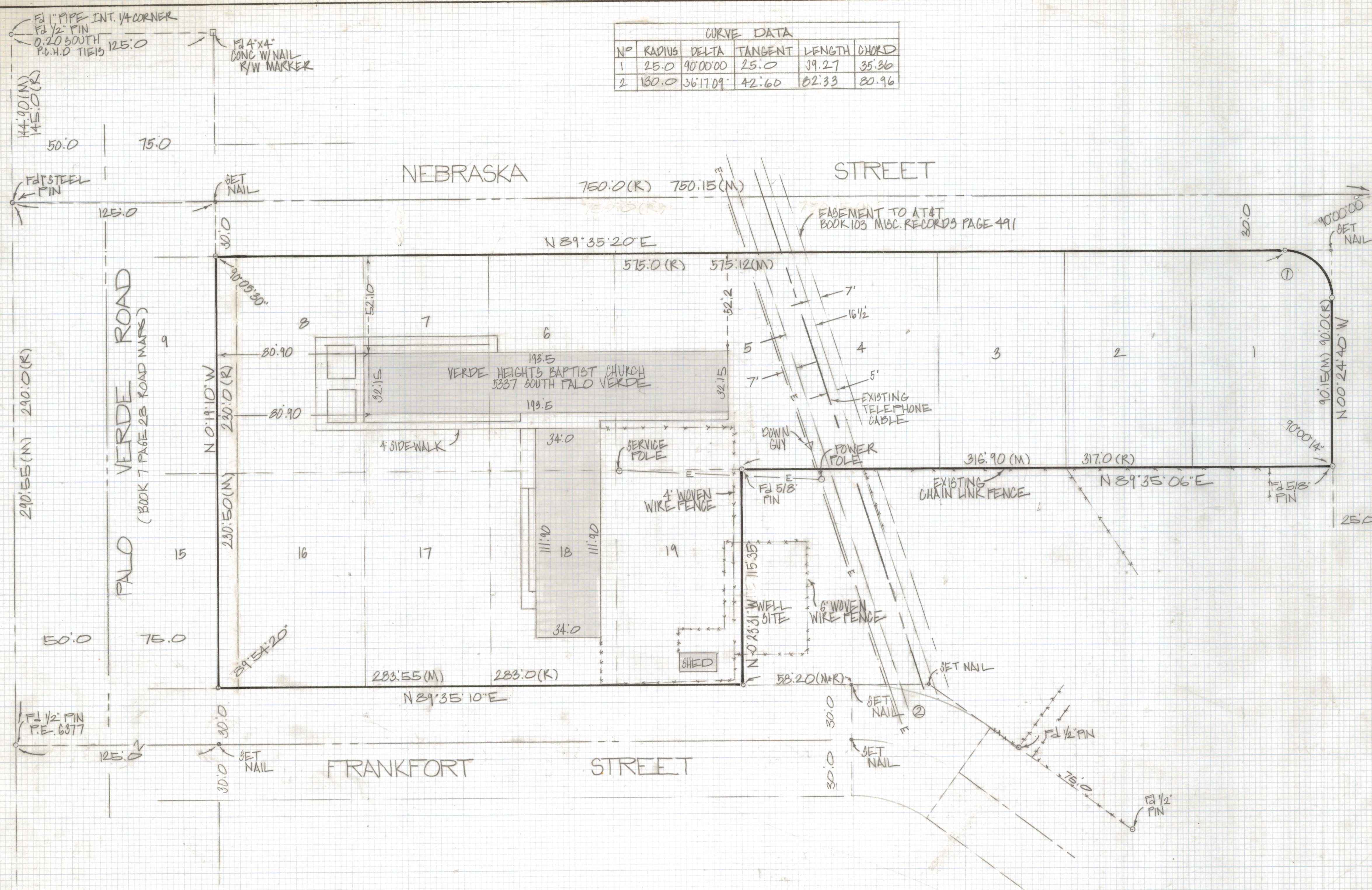


DISCLAIMER:

This unrecorded Record of Survey was donated to the City of Tucson. The City of Tucson provides this data for your personal use "as is." Additionally, the City of Tucson provides this information with the understanding that it is not guaranteed to be accurate, correct or complete and conclusions drawn from such information are the responsibility of the user.



CURVE DATA					
NO	RADIUS	DELTA	TANGENT	LENGTH	CHORD
1	25.0	90°00'00"	25.0	39.27	35.36
2	130.0	36°17'09"	42.60	82.33	80.96



- NOTES**
- (1) P INDICATES SET 1/2" PIN MKD L.S. 4680 UNLESS NOTED
 - (2) M-MEASURED
 - (3) R-MAP OR DEED RECORD
 - (4) SEE PINA COUNTY HIGHWAY DEPT ROAD MAP FALO VERDE ROAD BOOK 7 PAGE 28
 - (5) THE EASEMENT TO AMERICAN TELEPHONE AND TELEGRAPH COMPANY DESCRIBED IN BOOK 103 AT PAGE 441 OF MISCELLANEOUS RECORDS CONTAIN AT LEAST ONE BURIED CABLE CALL BLUE STAKE BEFORE DIGGING 792-2211

RESULTS OF SURVEY

OF LOTS 1 THRU 8 AND LOTS 16 THRU 19 AND PORTIONS OF LOTS 9 AND 15
 BLOCK 11 OF MORTIMORE ADDITION RECORDED IN BOOK 10 OF MAPS AND PLATS
 AT PAGE 13 IN THE OFFICE OF THE PINA COUNTY RECORDER PINA COUNTY ARIZONA



ROBERT F. MELLETT
 REGISTERED LAND SURVEYOR
 TUCSON, ARIZONA
 JOB # 83-142