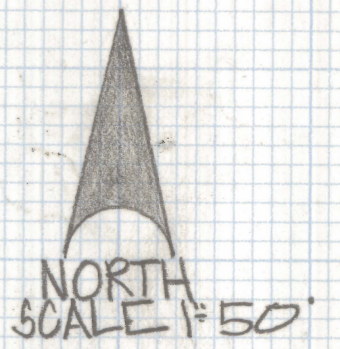
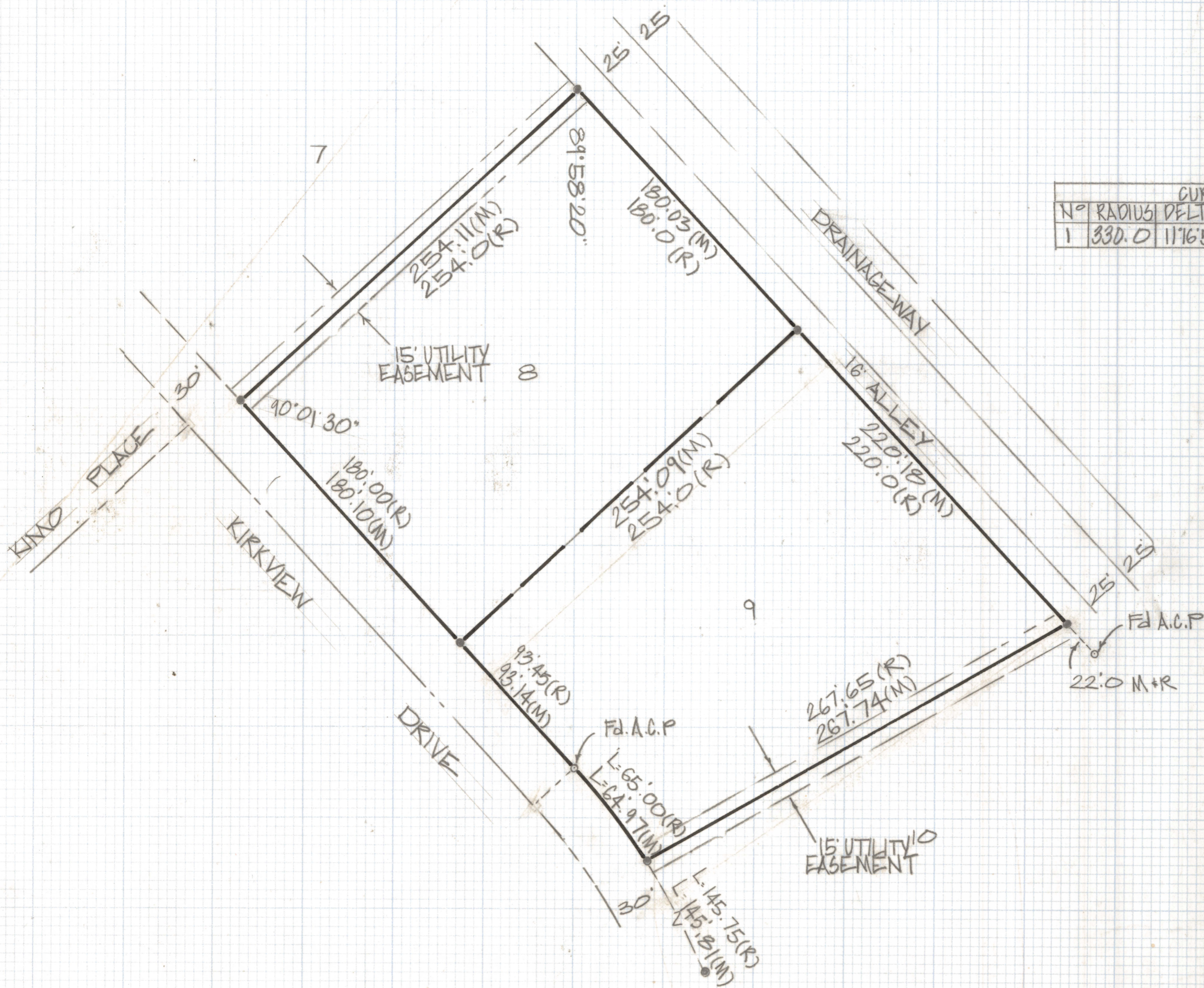


DISCLAIMER:

This unrecorded Record of Survey was donated to the City of Tucson. The City of Tucson provides this data for your personal use "as is." Additionally, the City of Tucson provides this information with the understanding that it is not guaranteed to be accurate, correct or complete and conclusions drawn from such information are the responsibility of the user.



CURVE DATA					
Nº	RADIUS	DELTA	TANGENT	LENGTH	CHORD
1	330.0	116°52'	32.59	64.97	64.87



RESULTS OF SURVEY

OF LOTS 8 AND 9 OF NEW TUCSON UNIT Nº 26 RECORDED IN BOOK 17 OF MAPS AND PLATS AT PAGE 34 IN THE OFFICE OF THE PIMA COUNTY RECORDER PIMA COUNTY ARIZONA

NOTES

- (1) → INDICATES FOUND 5/8" STEEL PIN UNLESS NOTED
- (2) A.C.P. ALUMINUM CAPPED PIN
- (3) M - MEASURED
- (4) R - MAP OR DEED RECORD



ROBERT F. MELLEN
REGISTERED LAND SURVEYOR
TUCSON, ARIZONA
JOB # 83-144