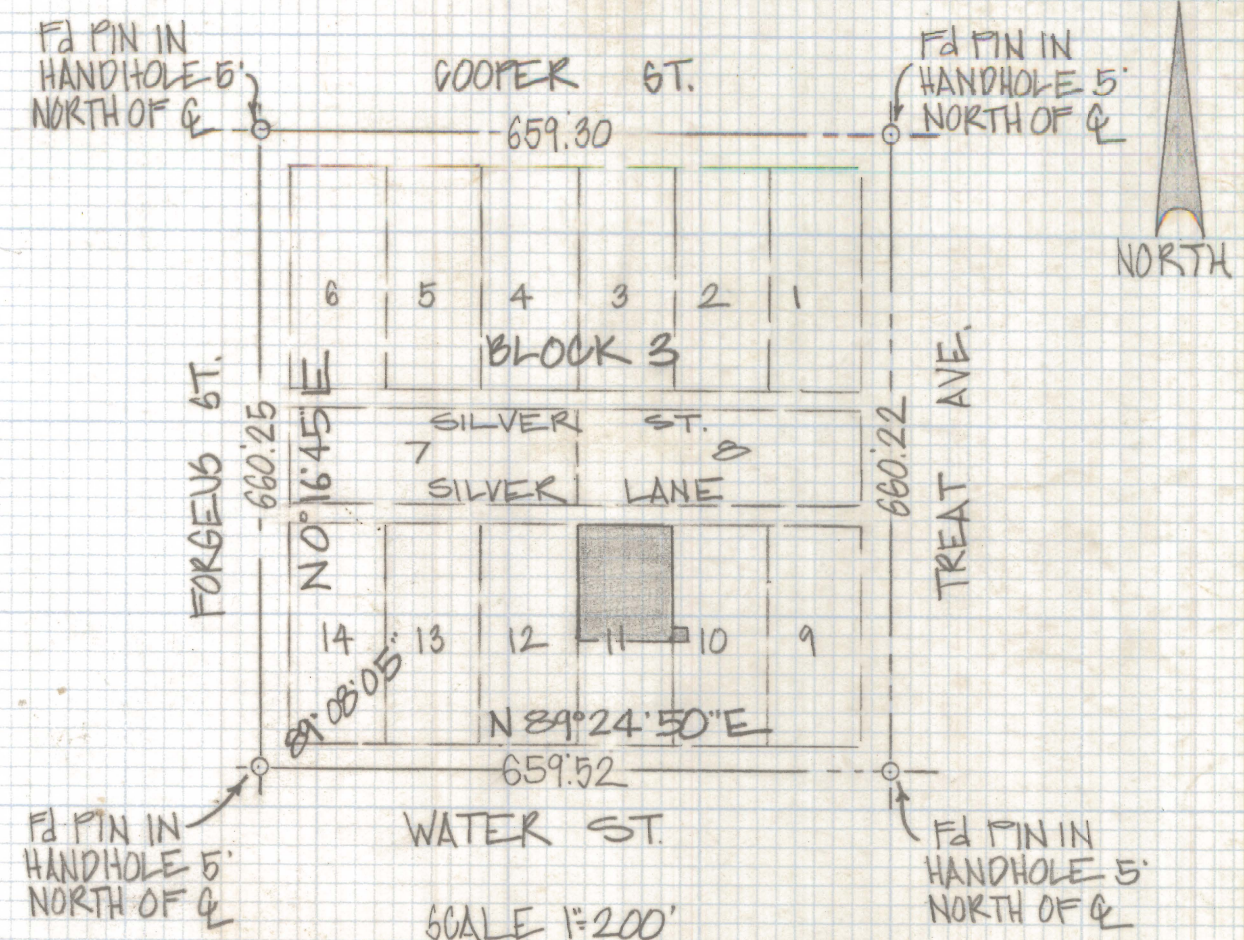
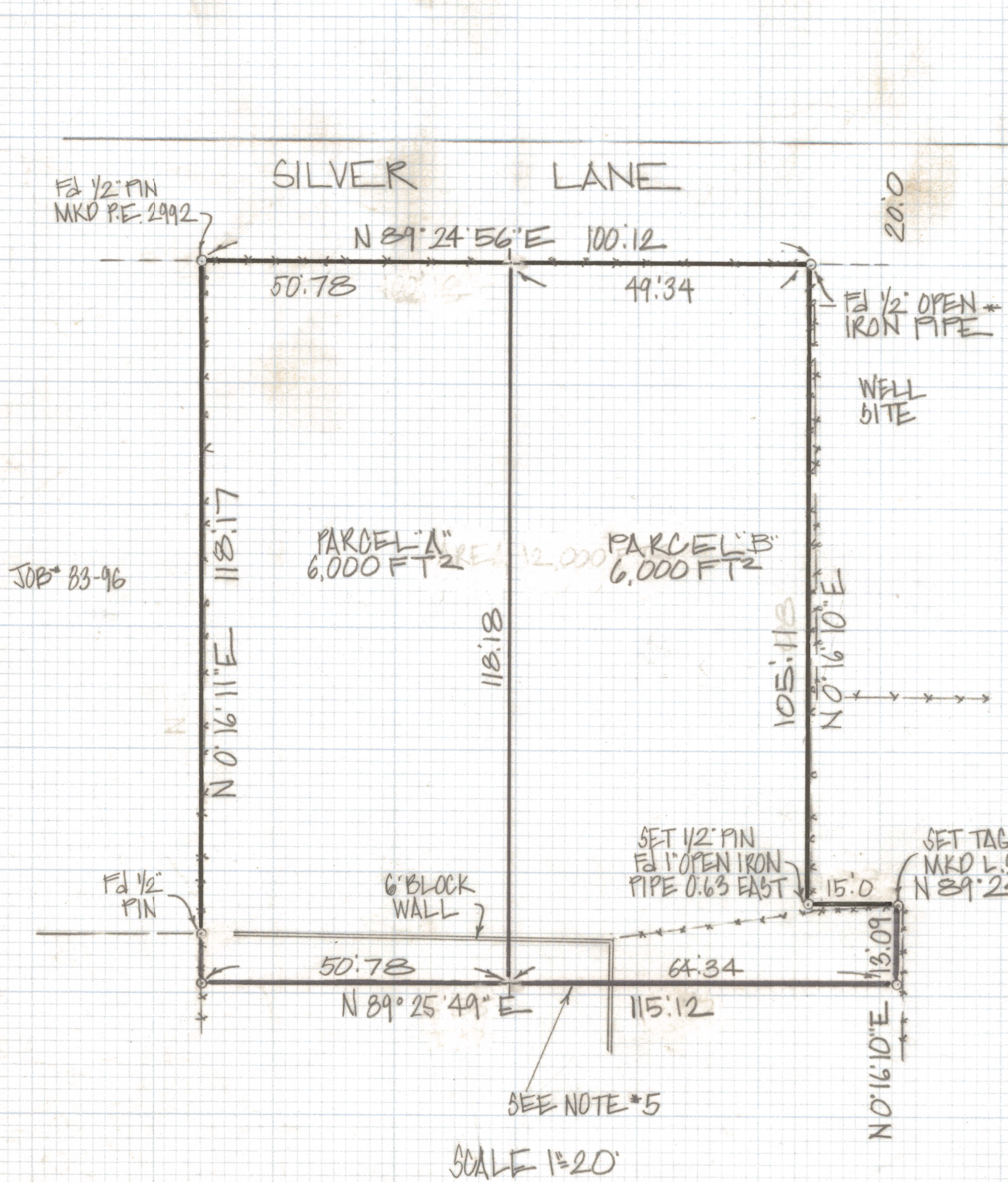


DISCLAIMER:

This unrecorded Record of Survey was donated to the City of Tucson. The City of Tucson provides this data for your personal use "as is." Additionally, the City of Tucson provides this information with the understanding that it is not guaranteed to be accurate, correct or complete and conclusions drawn from such information are the responsibility of the user.



NOTES

- (1) 9 INDICATES SET 1/2" PIN MKD L.S. 4680 UNLESS NOTED
- (2) SEE JOB# 83-96
- (3) TOTAL AREA 12,000 FT²
- (4) BASIS OF BEARINGS N 0° 16' 45" E FORGEUS ST. PER GRANT ROAD PARK
- (5) SET NAILS ON PROPERTY LINE
- (6) MONUMENTS AT BLOCK CORNERS DO NOT MATCH FOUND INTERNAL CORNERS. FROM 0.06 TO 0.15' FT INTERNAL CORNERS ACCEPTED
- (7) - CORNER NOT SET

RESULTS OF SURVEY

OF A PORTION OF LOTS 10 AND 11 BLOCK 3 GRANT ROAD PARK SUBDIVISION RECORDED IN BOOK 6 OF MAPS AND PLATS AT PAGE 63 IN THE OFFICE OF THE PIMA COUNTY RECORDER PIMA COUNTY ARIZONA



ROBERT F. MELLEN
REGISTERED LAND SURVEYOR
TUCSON ARIZONA
JOB# 83-148

REVISED PARCEL 'A' AND 'B'