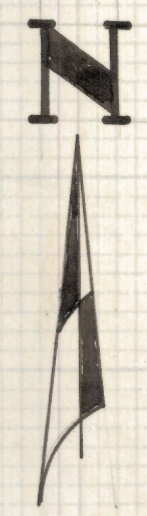
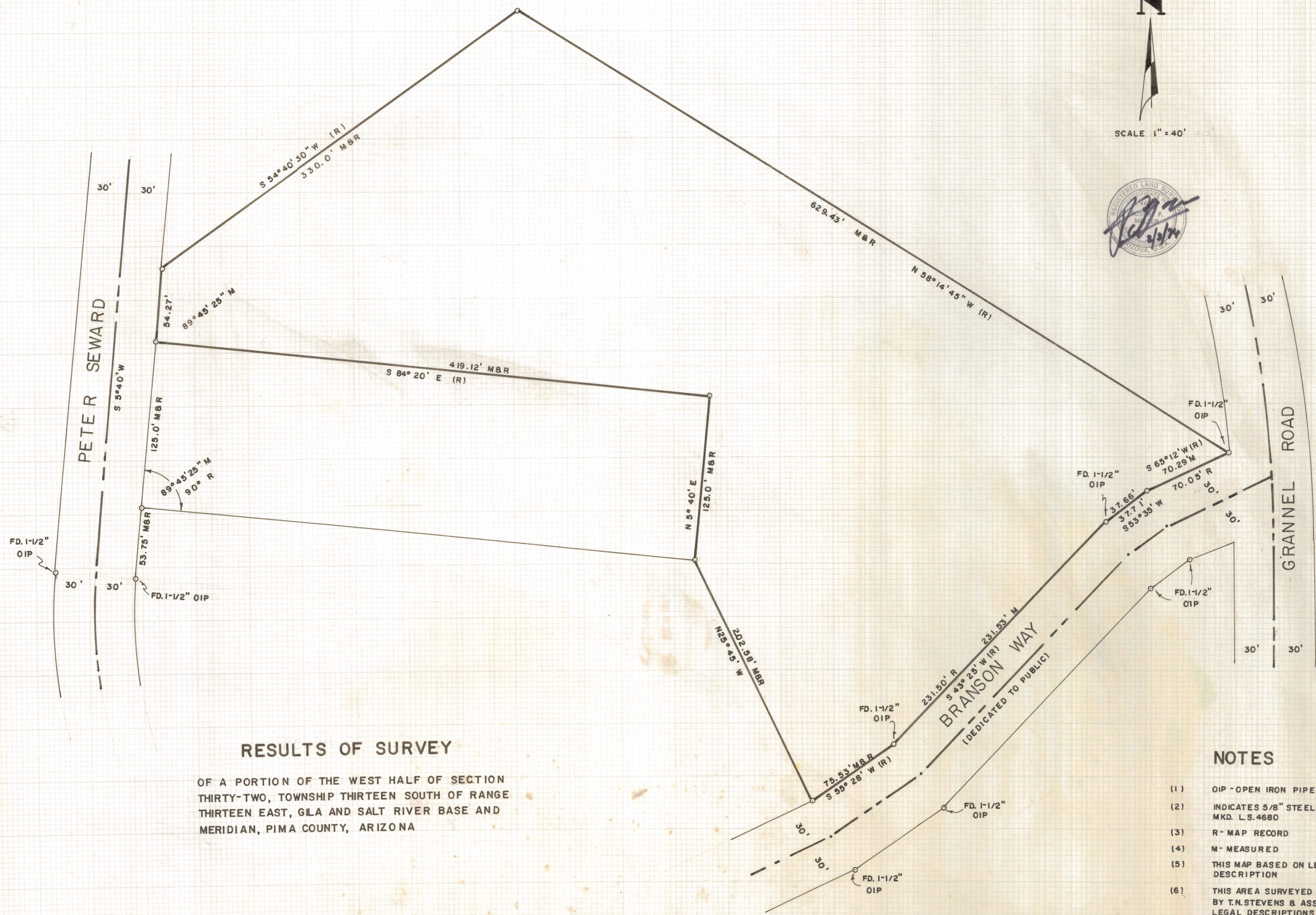


DISCLAIMER:

This unrecorded Record of Survey was donated to the City of Tucson. The City of Tucson provides this data for your personal use "as is." Additionally, the City of Tucson provides this information with the understanding that it is not guaranteed to be accurate, correct or complete and conclusions drawn from such information are the responsibility of the user.



SCALE 1" = 40'



RESULTS OF SURVEY

OF A PORTION OF THE WEST HALF OF SECTION THIRTY-TWO, TOWNSHIP THIRTEEN SOUTH OF RANGE THIRTEEN EAST, GILA AND SALT RIVER BASE AND MERIDIAN, PIMA COUNTY, ARIZONA

NOTES

- (1) OIP - OPEN IRON PIPE
- (2) INDICATES 5/8" STEEL PIN SET MKD. L.S. 4680
- (3) R - MAP RECORD
- (4) M - MEASURED
- (5) THIS MAP BASED ON LEGAL DESCRIPTION
- (6) THIS AREA SURVEYED 1955-1958 BY T.N. STEVENS & ASSO. THESE LEGAL DESCRIPTIONS ARE BASED ON THIS MAP

ROBERT F. MELLEN
 REGISTERED LAND SURVEYOR
 TUCSON, ARIZONA
 JOB # 76-7
 FEB. 1976