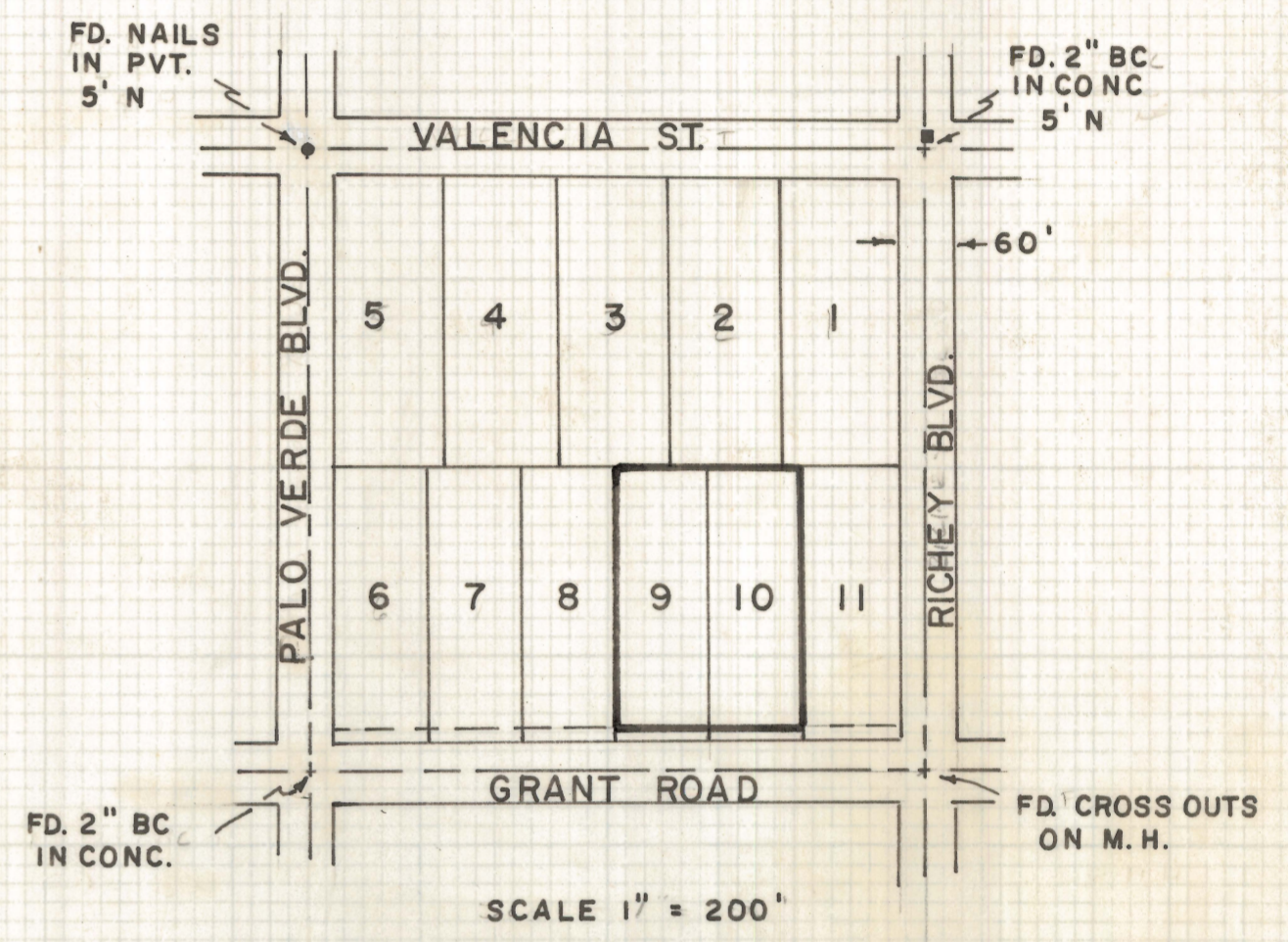
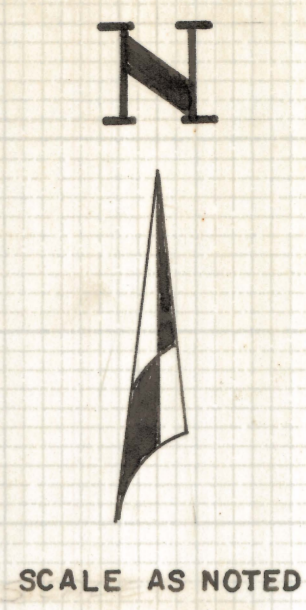
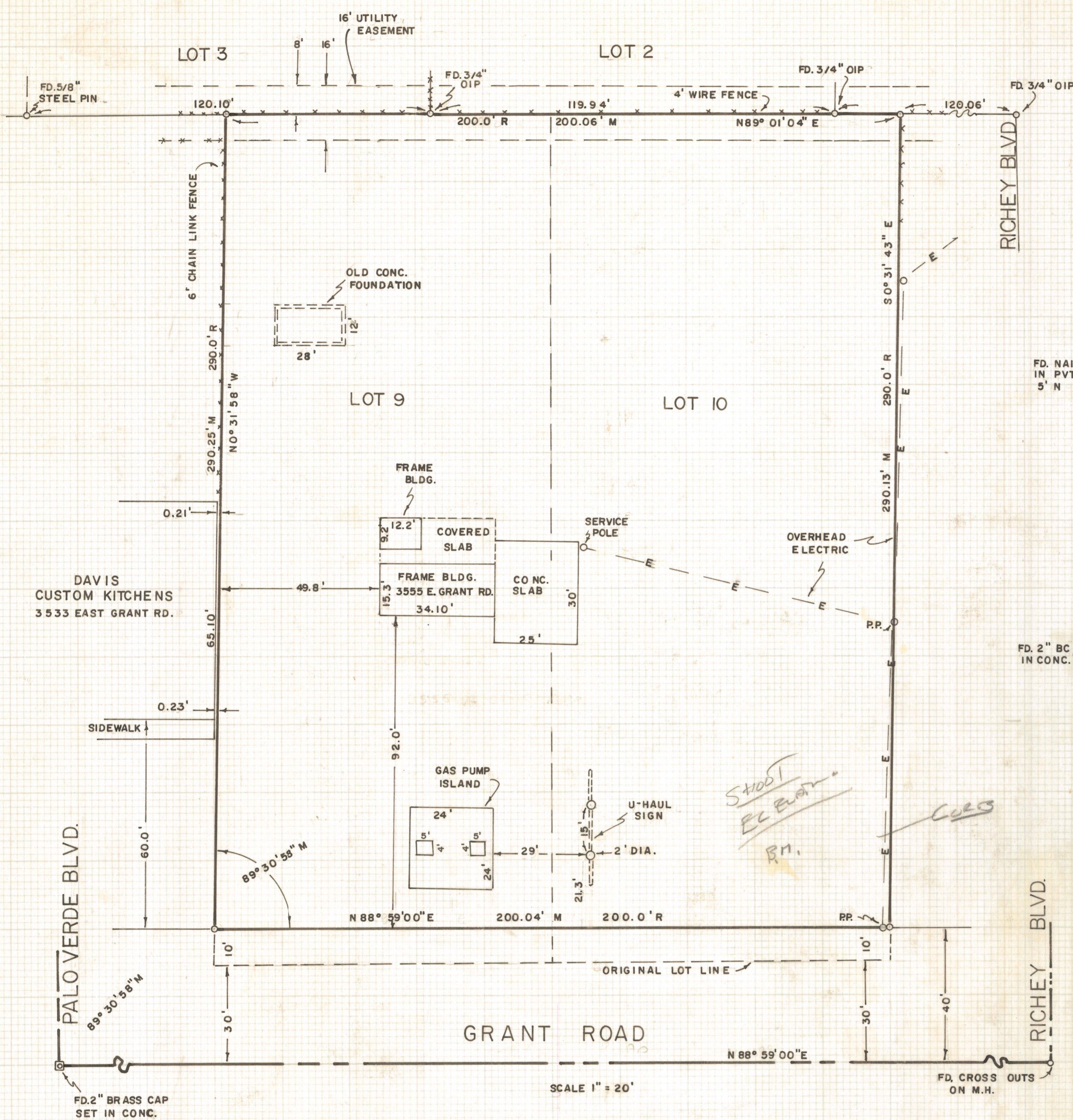


DISCLAIMER:

This unrecorded Record of Survey was donated to the City of Tucson. The City of Tucson provides this data for your personal use "as is." Additionally, the City of Tucson provides this information with the understanding that it is not guaranteed to be accurate, correct or complete and conclusions drawn from such information are the responsibility of the user.



NOTES

- (1) BASIS OF BEARINGS N88°59'E SHOWN ON GRANT RD., GRANTLAND ACRES 6/91 M&P
- (2) M- MEASURED
- (3) R- MAP RECORD
- (4) \odot INDICATES 5/8" STEEL PIN SET MKD. L.S. 4680 UNLESS NOTED
- (5) OIP - OPEN IRON PIPE
- (6) PP - POWER POLE

CERTIFICATION

I, ROBERT F. MELLEN, REGISTERED LAND SURVEYOR, STATE OF ARIZONA #4680 CERTIFY THAT THE ABOVE SURVEY WAS COMPLETED ON FEBRUARY 12, 1976 UNDER MY DIRECTIONS AND REPRESENTS A CORRECT SURVEY TO THE BEST OF MY KNOWLEDGE AND BELIEF.

RFM
 ROBERT F. MELLEN
 REGISTERED LAND SURVEYOR
 ARIZONA #4680

RESULTS OF SURVEY

OF LOTS NINE AND TEN OF BLOCK SEVEN OF GRANTLAND ACRES SUBDIVISION, AS RECORDED IN BOOK SIX OF MAPS AND PLATS AT PAGE NINETY-ONE IN THE OFFICE OF THE PIMA COUNTY RECORDER, PIMA COUNTY, ARIZONA, EXCEPT THE SOUTH TEN FEET THEREOF

GET CORR ELEVATIONS

ROBERT F. MELLEN
 REGISTERED LAND SURVEYOR
 TUCSON, ARIZONA
 JOB # 76-12
 FEB. 1976