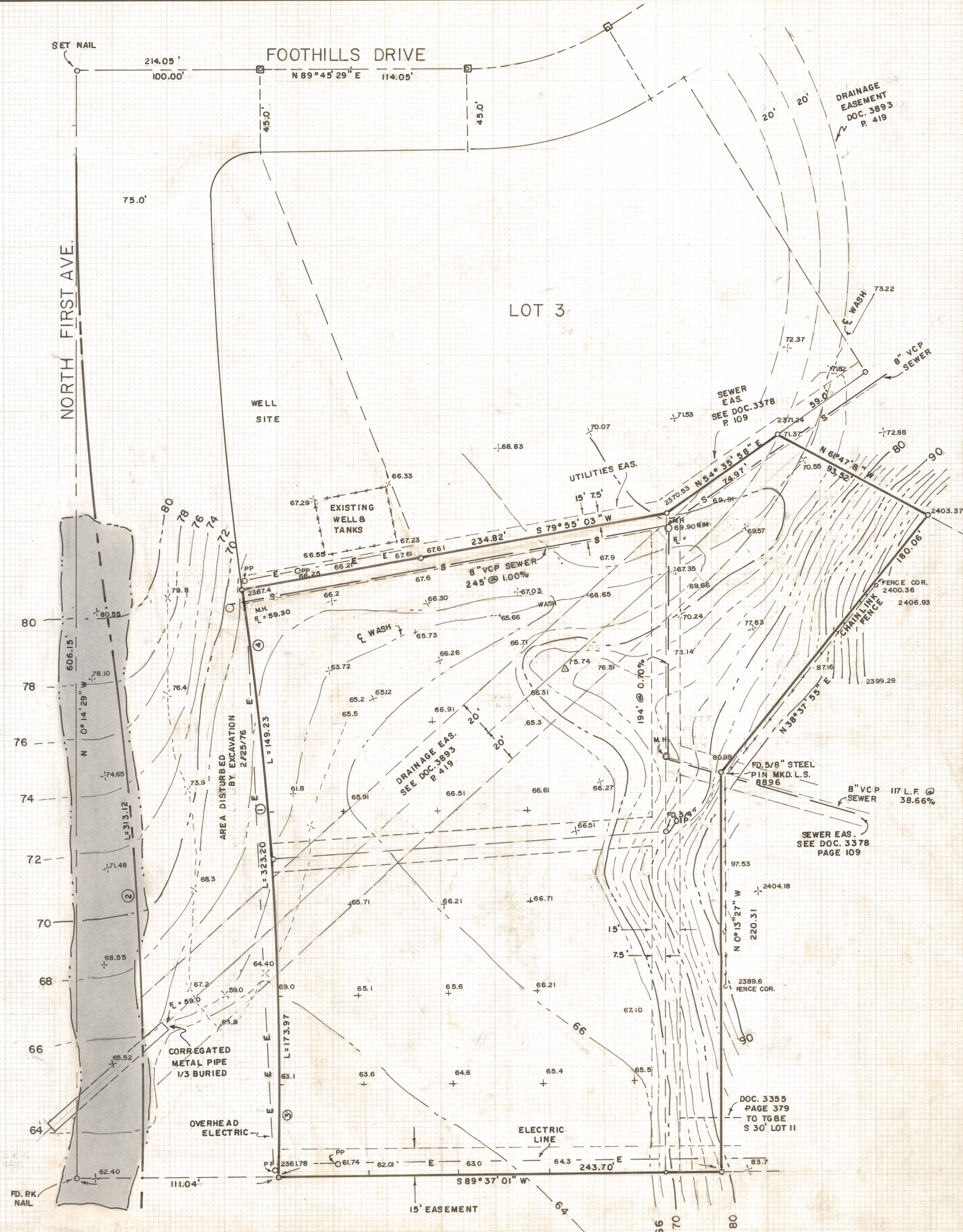


DISCLAIMER:

This unrecorded Record of Survey was donated to the City of Tucson. The City of Tucson provides this data for your personal use "as is." Additionally, the City of Tucson provides this information with the understanding that it is not guaranteed to be accurate, correct or complete and conclusions drawn from such information are the responsibility of the user.



N
SCALE 1"=30'



NOTES

- (1) O INDICATES 5/8" STEEL PIN SET MKD. L.S. 4680 UNLESS NOTED
- (2) ⊗ INDICATES 2" BRASS PLUG SET IN CONCRETE FOUND
- (3) BASIS OF BEARINGS N89°45'29"E AS SHOWN ON FOOTHILL DRIVE, NORTHRIDGE ESTATES, BK. 14 PG. 14 OF M8P
- (4) OIP-OPEN IRON PIPE
- (5) CONTOUR INTERVALS - 2'
- (6) THERE IS AN ADDITIONAL 5' OVERHEAD EASEMENT ON ALL PROP. LINES
- (7) SEWERS TAKEN FROM SAN. DIST. PLAN SDG-63

RESULTS OF SURVEY

OF LOTS ONE AND TWO AND A PORTION OF LOTS TEN AND ELEVEN OF NORTHRIDGE ESTATES SUBDIVISION AS RECORDED IN BOOK 14 OF MAPS AND PLATS AT PAGE 14 IN THE OFFICE OF THE PIMA COUNTY RECORDER, PIMA COUNTY, ARIZONA

CURVE DATA

NO.	RADIUS	CEN. ANGLE	TANGENT	LENGTH
1	1984.86	9° 19' 47"	161.96	323.20
2	1909.86	9° 23' 37"	156.91	313.12
3	1984.86	5° 01' 19"	87.04	173.97
4	1984.86	4° 18' 28"	74.65	149.23

ROBERT F. MELLEN
REGISTERED LAND SURVEYOR
TUCSON, ARIZONA
JOB # 76-20