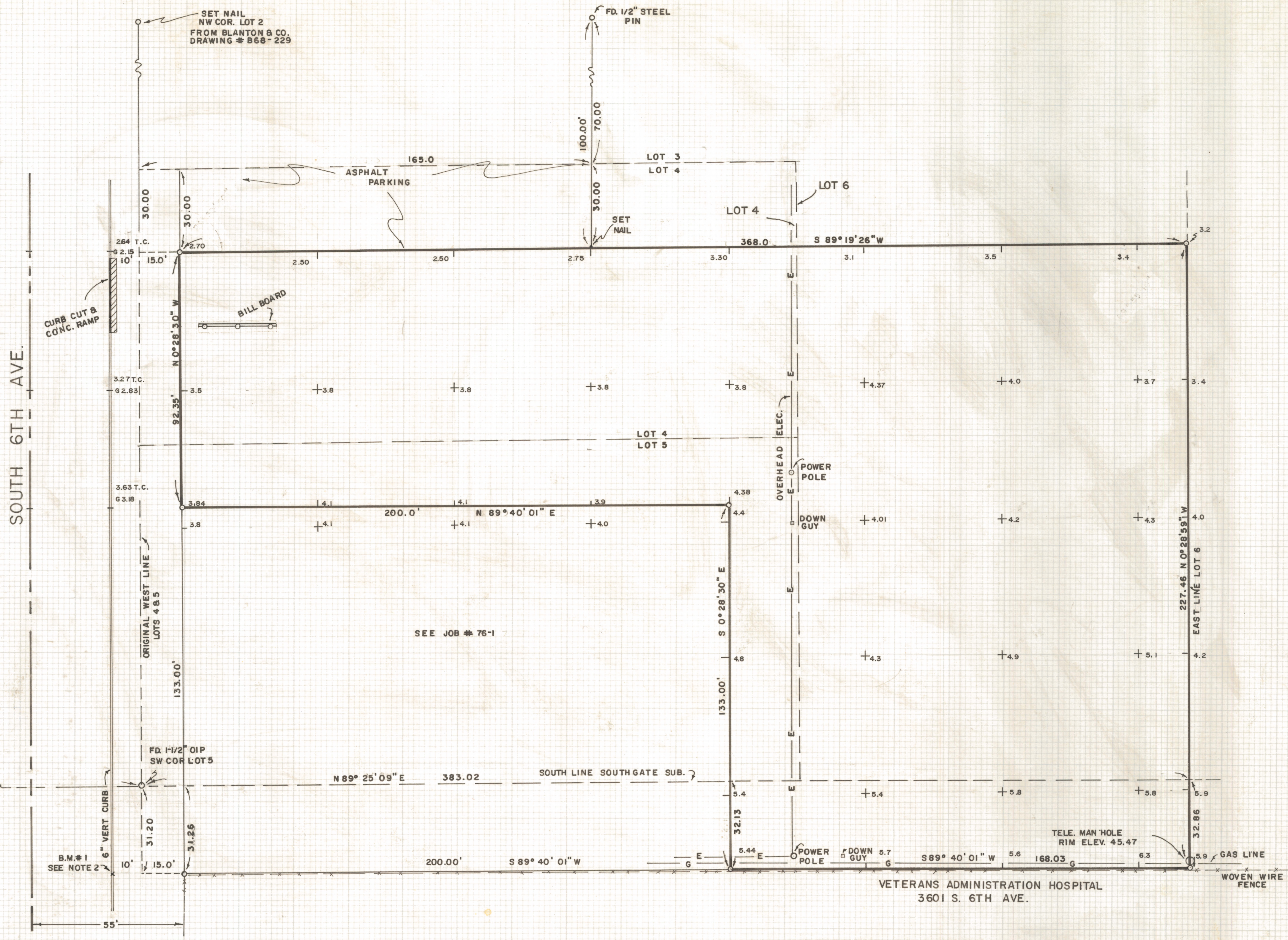
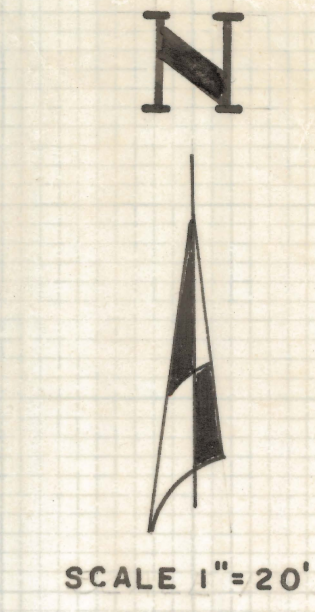


DISCLAIMER:

This unrecorded Record of Survey was donated to the City of Tucson. The City of Tucson provides this data for your personal use "as is." Additionally, the City of Tucson provides this information with the understanding that it is not guaranteed to be accurate, correct or complete and conclusions drawn from such information are the responsibility of the user.



NOTES

- (1) INDICATES 5/8" STEEL PIN SET MKD. L.S. 4680 UNLESS NOTED
- (2) BENCH MARK + ON CURB EAST SIDE OF SOUTH 6TH AVE. OPPOSITE NORTHWEST CORNER VETERANS HOSPITAL ELEV 2444.98 CITY OF TUCSON DATUM PLAN 663-40
- (3) THERE HAS BEEN APPROXIMATELY 6" TO 8" INCHES OF FILL DIRT DISTRIBUTED THROUGHOUT THIS PROPERTY

RESULTS OF SURVEY

OF A PORTION OF LOTS FOUR, FIVE AND SIX OF SOUTHGATE SUBDIVISION AS RECORDED IN BOOK 7 OF MAPS AND PLATS AT PAGE 18 IN THE OFFICE OF THE PIMA COUNTY RECORDER, PIMA COUNTY, ARIZONA AND A PORTION OF THE NORTHWEST QUARTER OF THE SOUTHEAST QUARTER OF SECTION TWENTY-FIVE, TOWNSHIP FOURTEEN SOUTH OF RANGE THIRTEEN EAST, GILA AND SALT RIVER BASE AND MERIDIAN, PIMA COUNTY, ARIZONA

VOID
SEE 76-41

ROBERT F. MELLEN
REGISTERED LAND SURVEYOR
TUCSON, ARIZONA

JOB # 76-28
MARCH 1976

REVISED 3/19/76 (TIES)

Z-2020-544