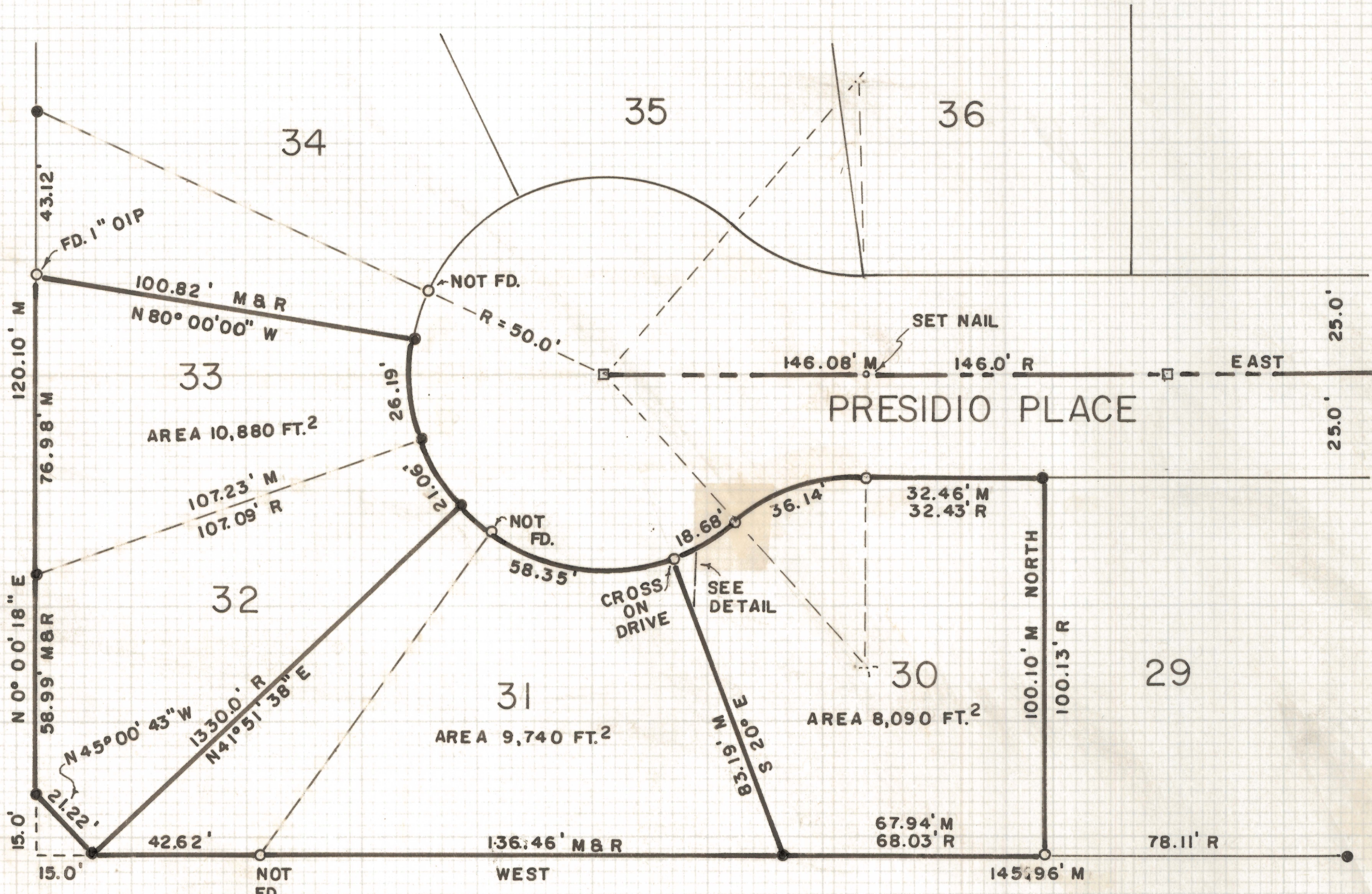


DISCLAIMER:

This unrecorded Record of Survey was donated to the City of Tucson. The City of Tucson provides this data for your personal use "as is." Additionally, the City of Tucson provides this information with the understanding that it is not guaranteed to be accurate, correct or complete and conclusions drawn from such information are the responsibility of the user.

N

SCALE 1" = 30'

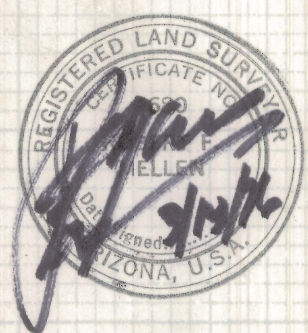


NOTES

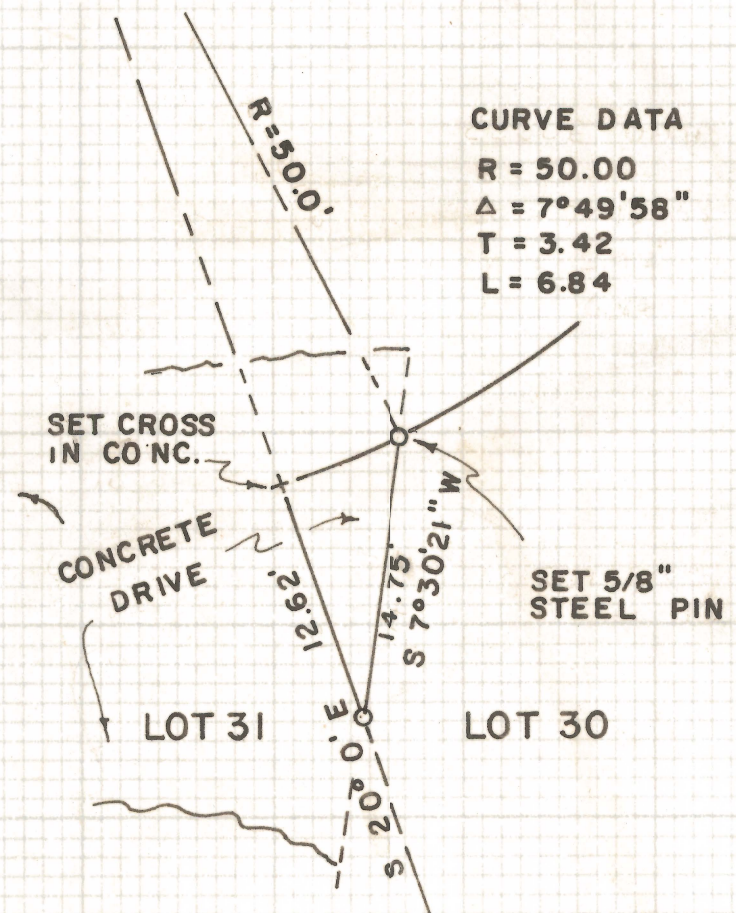
- (1) ● INDICATES 1/2" STEEL PIN FOUND
- (2) ○ INDICATES 5/8" STEEL PIN SET MKD. L.S. 4680 UNLESS NOTED
- (3) --- INDICATES ORIGINAL LOT LINE
- (4) M - MEASURED
- (5) R - MAP OR DEED RECORD
- (6) □ INDICATES 2" BRASS PLUG FOUND SET IN CONC.

RESULTS OF SURVEY

AND DIVISION OF LOTS THIRTY, THIRTY-ONE, THIRTY-TWO AND THIRTY-THREE OF FORT LOWELL ESTATES SUBDIVISION AS RECORDED IN BOOK FOURTEEN OF MAPS AND PLATS AT PAGE FIFTY-EIGHT IN THE OFFICE OF THE PIMA COUNTY RECORDER, PIMA COUNTY, ARIZONA



CURVE DATA
 R = 50.00
 $\Delta = 7^\circ 49' 58''$
 T = 3.42
 L = 6.84



SCALE 1" = 10'
DETAIL #1

ROBERT F. MELLEN
 REGISTERED LAND SURVEYOR
 TUCSON, ARIZONA
 JOB # 76-30
 MARCH 1976

Z-2020-546