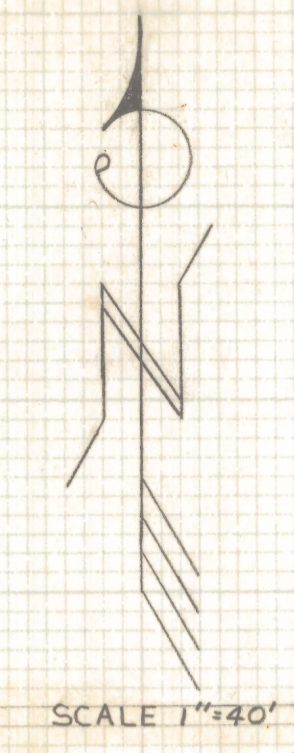


# **DISCLAIMER:**

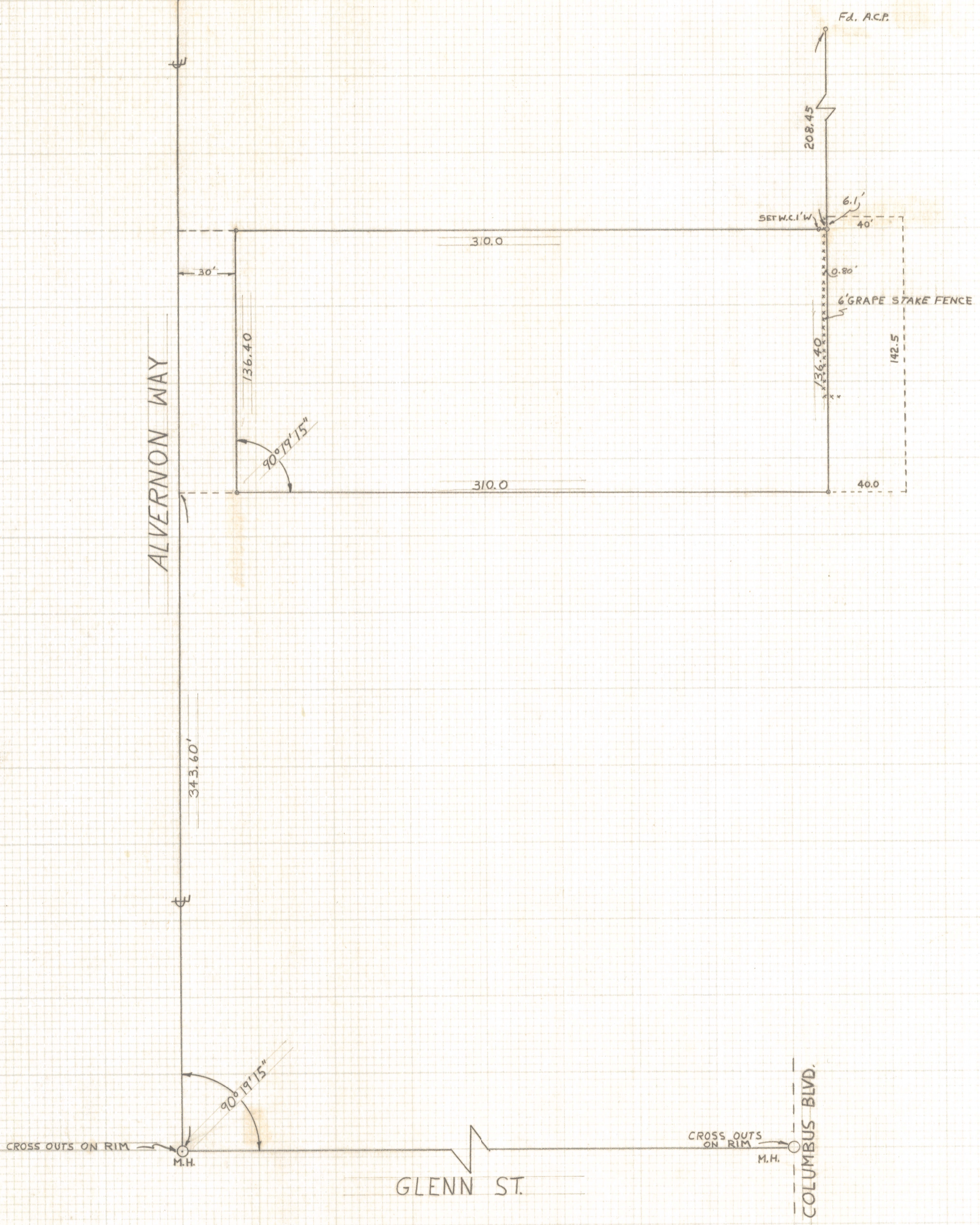
**This unrecorded Record of Survey was donated to the City of Tucson. The City of Tucson provides this data for your personal use "as is." Additionally, the City of Tucson provides this information with the understanding that it is not guaranteed to be accurate, correct or complete and conclusions drawn from such information are the responsibility of the user.**

T.13.S. 28 27  
33 34 R.14.E.

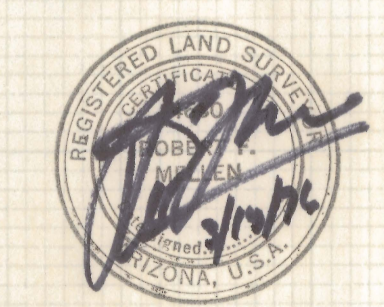
CROSS OUTS ON RIM  
M.H.  
125.00  
FORT LOWELL RD.



RESULTS OF SURVEY  
OF  
PORTIONS OF LOTS THREE AND FOUR  
IN SECTION THIRTY FOUR, TOWNSHIP  
THIRTEEN SOUTH OF RANGE FOURTEEN  
EAST, GILA AND SALT RIVER BASE AND  
MERIDIAN, PIMA COUNTY, ARIZONA.



- NOTES:
- (1) SET WITNESS CORNER 1.0' WEST OF NORTH EAST PROP. COR.
  - (2) M.H. = MAN HOLE
  - (3) SET 5/8" STEEL PIN AT ALL PROP. CORNERS. EXCLUDING N.E. COR.
  - (4) USED CITY ROAD PLANS # R-73-5 FOR REFERENCE
  - (5) A.C.P. = ALUMINUM CAPPED PIN



ROBERT F. MELLEN  
REGISTERED LAND SURVEYOR  
TUCSON, ARIZONA

MARCH 1976  
JOB # 76-38