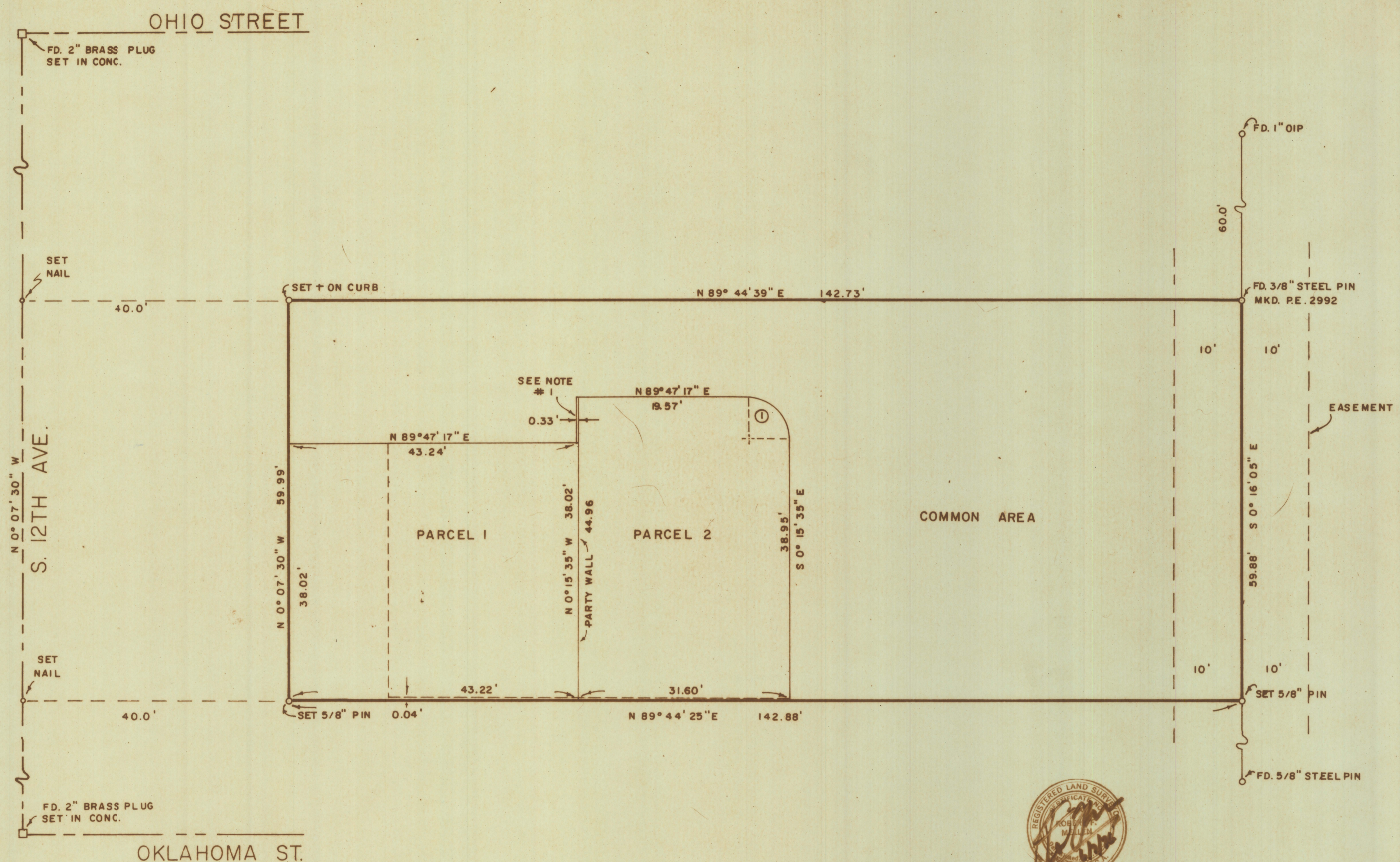


DISCLAIMER:

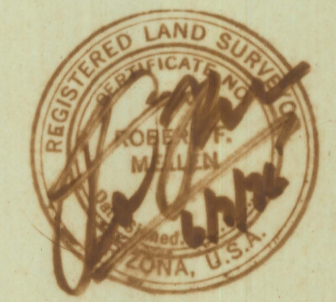
This unrecorded Record of Survey was donated to the City of Tucson. The City of Tucson provides this data for your personal use "as is." Additionally, the City of Tucson provides this information with the understanding that it is not guaranteed to be accurate, correct or complete and conclusions drawn from such information are the responsibility of the user.



NOTES
 (1) THE WEST 4 INCHES OF THIS BLOCK WALL IS DEFINED AS COMMON AREA.

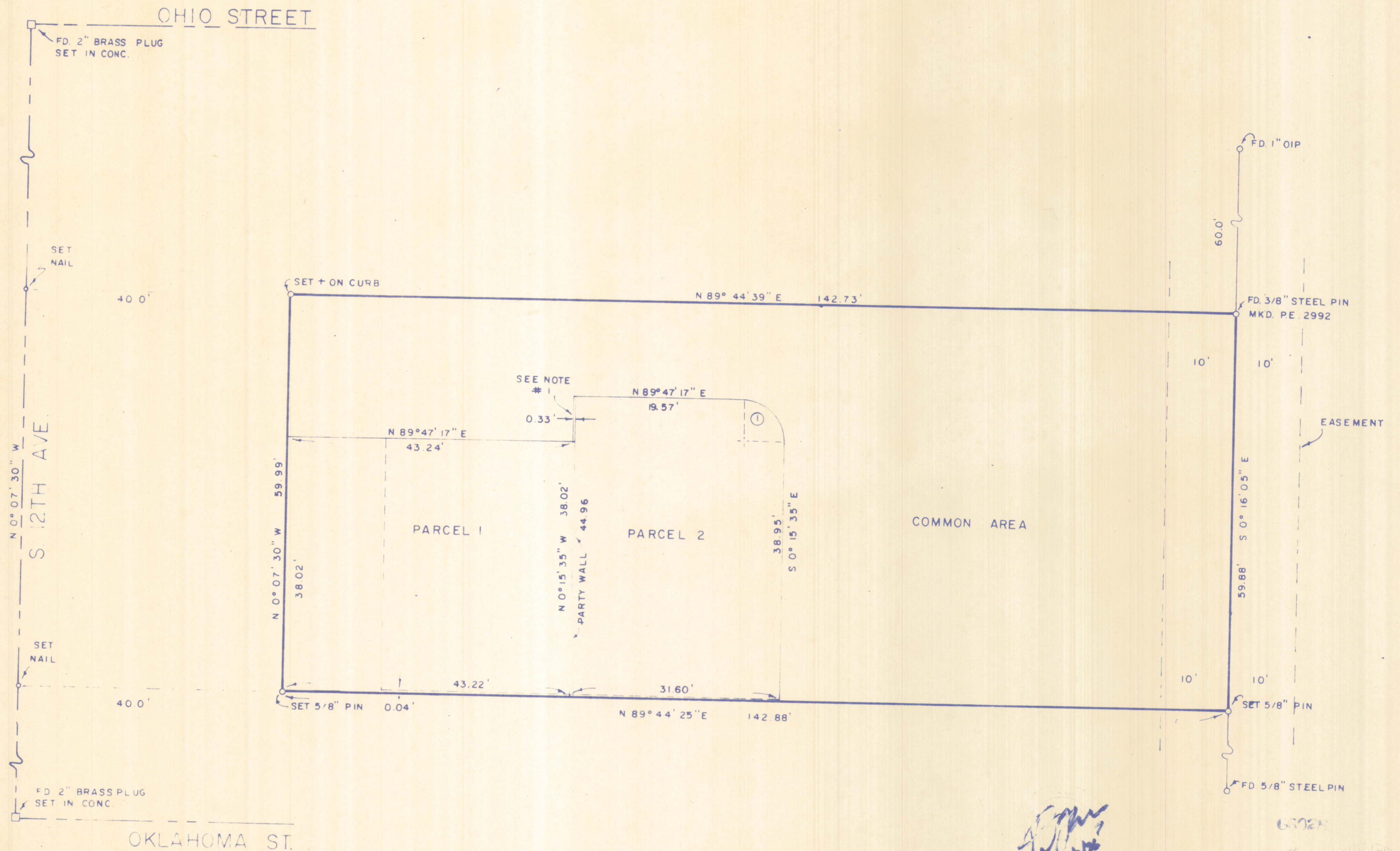
RESULTS OF SURVEY

OF AND THE DIVISION OF LOT 39 IN BLOCK 77 OF NATIONAL CITY NO. 5, A SUBDIVISION RECORDED IN BOOK 7 OF MAPS AND PLATS AT PAGE 48 IN THE OFFICE OF THE PIMA COUNTY RECORDER, PIMA COUNTY, ARIZONA



CURVE DATA				
NO.	RADIUS	Δ	TAN	LENGTH
1	6.0	90° 00' 00"	6.0	9.42

JOB # 76-42
 APRIL -1976



NOTES

(1) THE WEST 4 INCHES OF THIS BLOCK WALL IS DEFINED AS COMMON AREA.

RESULTS OF SURVEY

OF AND THE DIVISION OF LOT 39 IN BLOCK 77 OF NATIONAL CITY NO. 5, A SUBDIVISION RECORDED IN BOOK 7 OF MAPS AND PLATS AT PAGE 48 IN THE OFFICE OF THE PIMA COUNTY RECORDER, PIMA COUNTY, ARIZONA

Handwritten signature

CURVE DATA				
NO.	RADIUS	Δ	TAN	LENGTH
1	6.0	90° 00' 00"	6.0	9.42

65723
1000
Handwritten notes and stamp

Handwritten signatures

JOB # 76-42
APRIL-1976