

DISCLAIMER:

This unrecorded Record of Survey was donated to the City of Tucson. The City of Tucson provides this data for your personal use "as is." Additionally, the City of Tucson provides this information with the understanding that it is not guaranteed to be accurate, correct or complete and conclusions drawn from such information are the responsibility of the user.

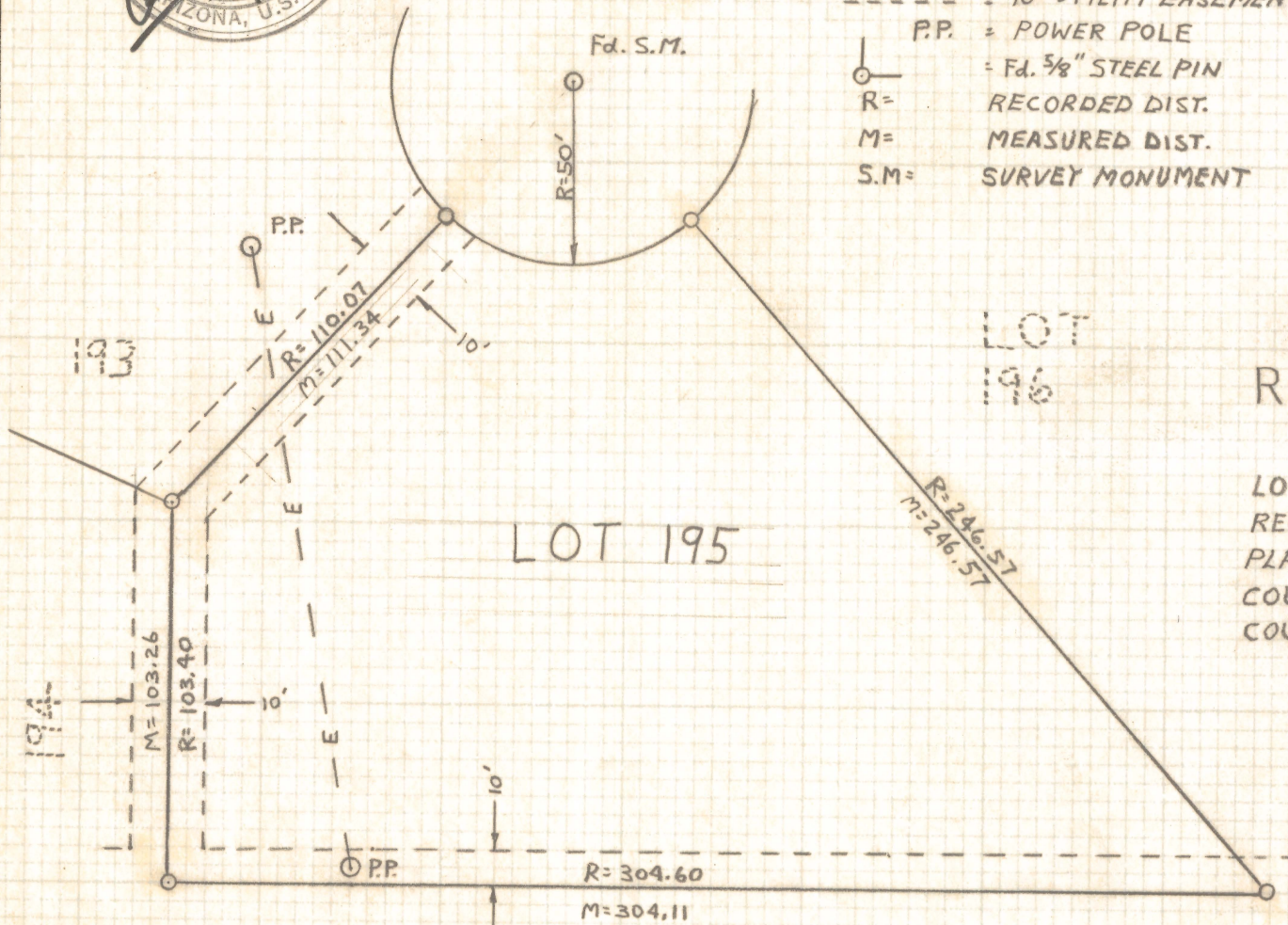


NOTES:

- E - E - = OVER HEAD ELECTRIC
- - - = 10' UTILITY EASEMENT
- P.P. = POWER POLE
- = Fd. 5/8" STEEL PIN
- R = RECORDED DIST.
- M = MEASURED DIST.
- S.M. = SURVEY MONUMENT



SCALE 1"=50'



RESULTS OF SURVEY OF LOT 195

ORO VALLEY ESTATES
 RECORDED IN BOOK 13, MAPS AND
 PLATS AT PAGE 60 IN THE PIMA
 COUNTY RECORDERS OFFICE, PIMA
 COUNTY, ARIZONA.

ROBERT F. MELLEN
 REGISTERED LAND SURVEYOR
 TUCSON, ARIZONA
 JOB # 76-44
 APRIL 1976

B.K.

Z-2020-555