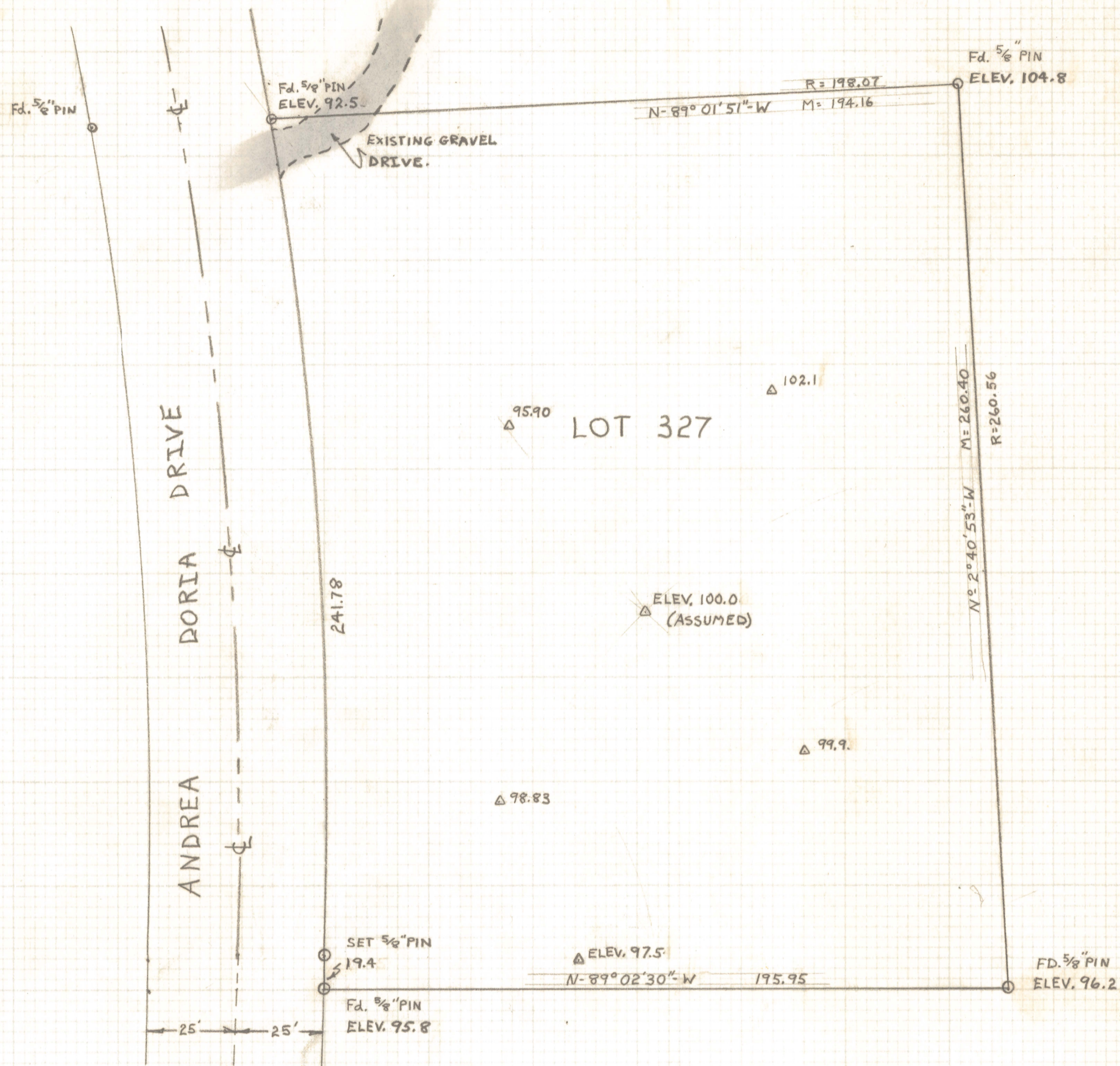


# **DISCLAIMER:**

**This unrecorded Record of Survey was donated to the City of Tucson. The City of Tucson provides this data for your personal use "as is." Additionally, the City of Tucson provides this information with the understanding that it is not guaranteed to be accurate, correct or complete and conclusions drawn from such information are the responsibility of the user.**



LOT 32.5



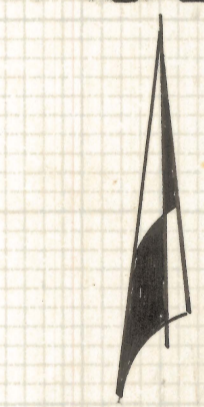
RESULTS OF SURVEY OF

LOT 327 OF CASAS ADOBES ESTATES NO. 3-A RESUBDIVISION, RECORDED IN BOOK 10, AT PAGE 54 IN THE OFFICE OF THE PIMA COUNTY RECORDER, PIMA COUNTY, ARIZONA.

NOTES:

- (1) M = MEASURED DISTANCE
- (2) R = RECORD DIST
- (3)  $\phi$  = CENTERLINE OF STREET
- (4) ELEVATIONS BY STADIA
- (5) Fd. = FOUND

N



SCALE 1" = 30'



ROBERT F. MELLEN  
REGISTERED LAND SURVEYOR  
TUCSON, ARIZONA  
JOB # 76-51

Z-2020559