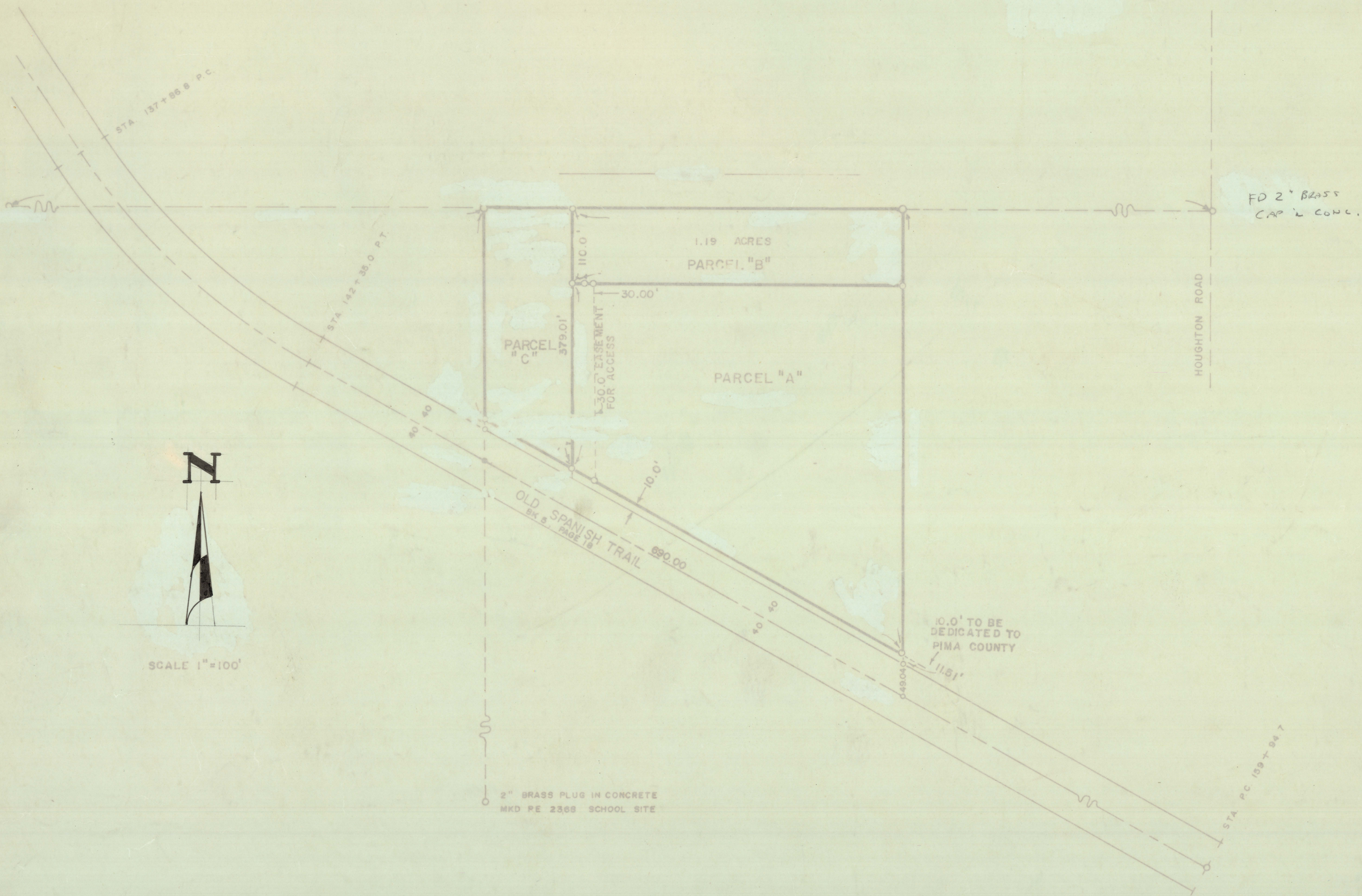


DISCLAIMER:

This unrecorded Record of Survey was donated to the City of Tucson. The City of Tucson provides this data for your personal use "as is." Additionally, the City of Tucson provides this information with the understanding that it is not guaranteed to be accurate, correct or complete and conclusions drawn from such information are the responsibility of the user.



RESULTS OF SURVEY of

A PORTION OF THE NORTHEAST ONE QUARTER OF THE
 SOUTHEAST ONE QUARTER OF SECTION 23, TOWNSHIP
 14 SOUTH, RANGE 15 EAST, G. & S. R. B. & M. PIMA COUNTY,
 ARIZONA.

NOTES

- (1) INDICATES 1/2" STEEL PIN MARKED L.S. 4680 UNLESS OTHERWISE INDICATED
- (2) TOTAL ACRES
- (3) REVISION OF JOB #71-76 & JOB #73-79
NEW CORNERS NOT SET
- (4) CORNERS AS SHOWN ABOVE SET 2/13/74

ROBERT F. MELLETT
 REGISTERED LAND SURVEYOR
 TUCSON, ARIZONA

JOB # 76-53
 APRIL 76