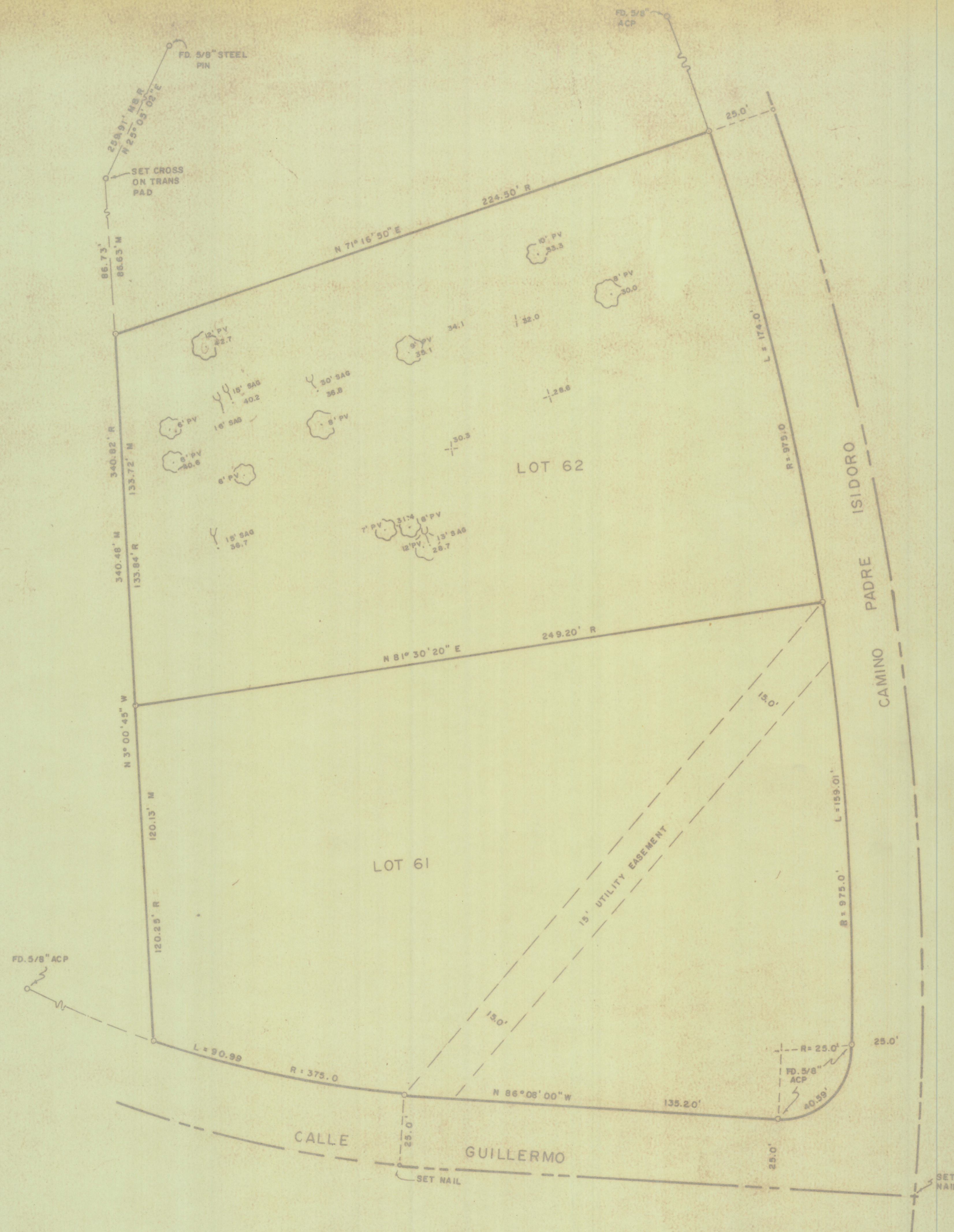


# **DISCLAIMER:**

**This unrecorded Record of Survey was donated to the City of Tucson. The City of Tucson provides this data for your personal use "as is." Additionally, the City of Tucson provides this information with the understanding that it is not guaranteed to be accurate, correct or complete and conclusions drawn from such information are the responsibility of the user.**



SCALE 1"=20'

**RESULTS OF SURVEY**

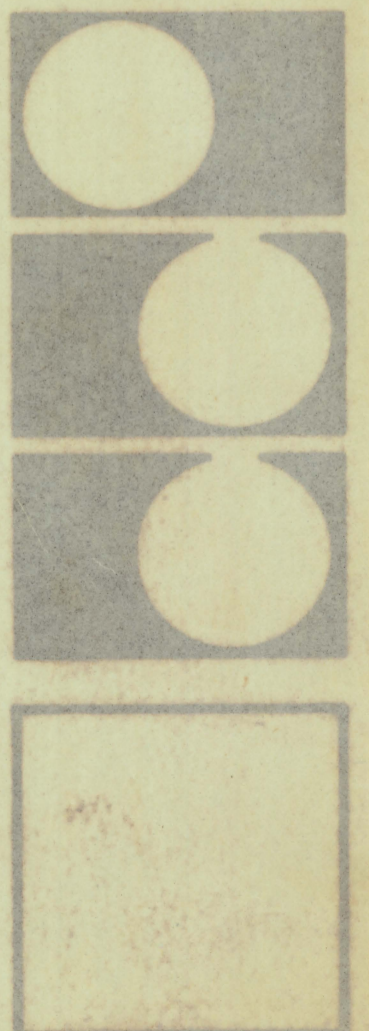
OF LOTS SIXTY-ONE AND SIXTY-TWO OF SANTA CATALINA ESTATES NUMBER FOUR AS RECORDED IN BOOK SEVENTEEN AT PAGE SEVENTEEN OF MAPS AND PLATS IN THE OFFICE OF THE PIMA COUNTY RECORDER, PIMA COUNTY, ARIZONA

**NOTES**

- (1) ACP - ALUMINUM CAP PIN FOUND
- (2) INDICATES 5/8" STEEL PIN SET MKD. L.S. 4680 UNLESS NOTED
- (3) PV - PALO VERDE
- (4) Y - SAG - SAGUARO

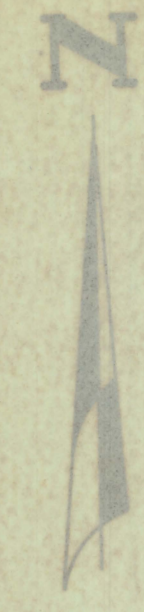
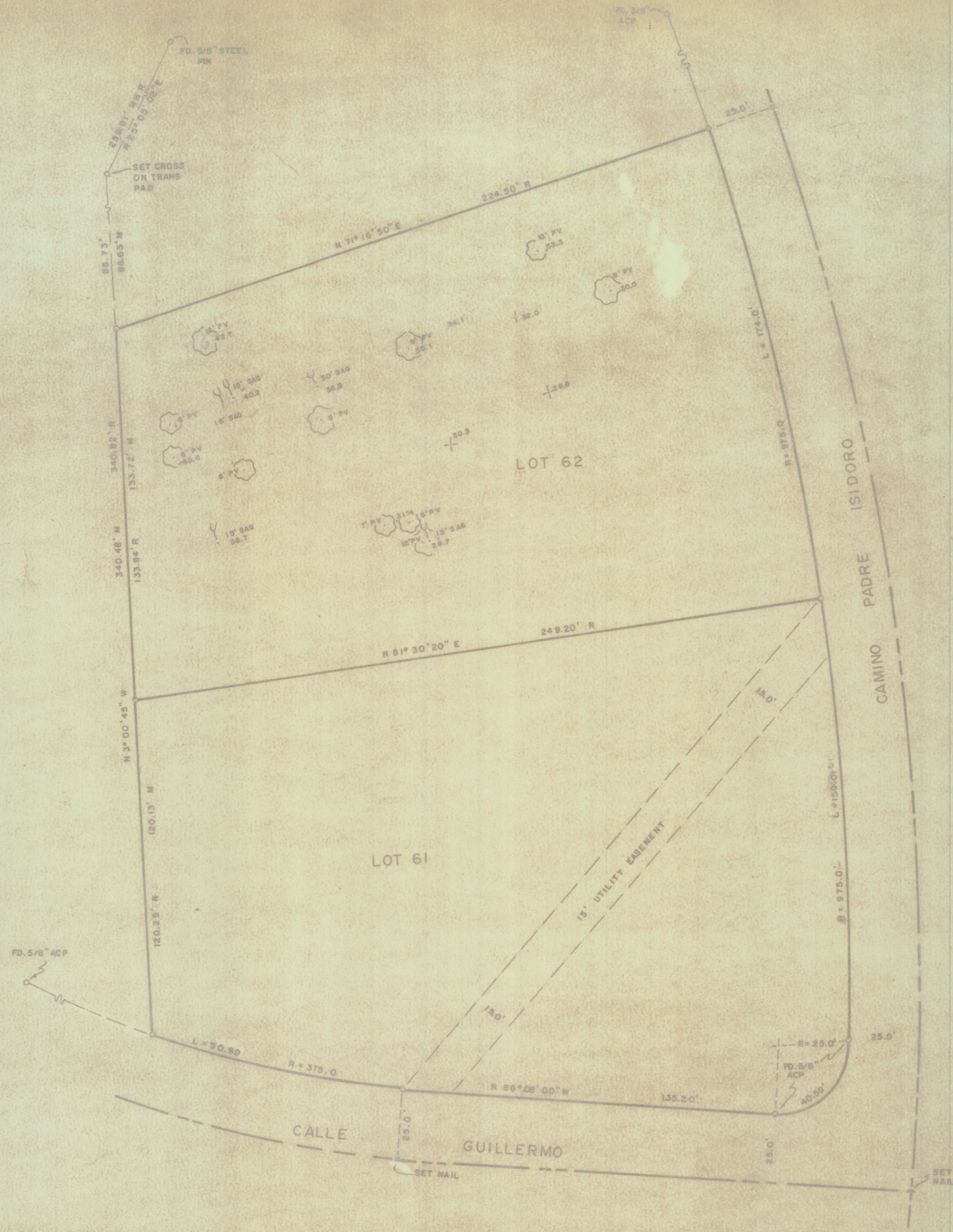
REVISIONS	BY	DATE

design and development incorporated  
 5633 N. ORACLE ROAD #  
 TUCSON, ARIZONA 85704  
 (602) 898-7200



Z-2020-567-001

JOB #76-1



SCALE 1"=20'

**RESULTS OF SURVEY**

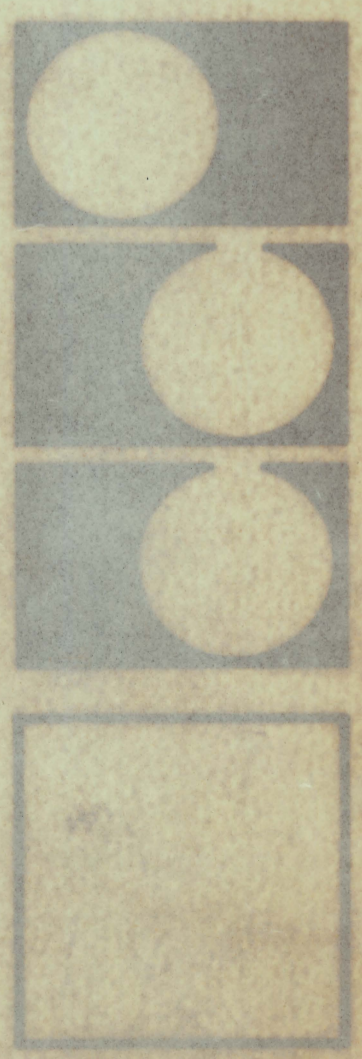
OF LOTS SIXTY-ONE AND SIXTY-TWO OF SANTA CATALINA ESTATES NUMBER FOUR AS RECORDED IN BOOK SEVENTEEN AT PAGE SEVENTEEN OF MAPS AND PLATS IN THE OFFICE OF THE PIMA COUNTY RECORDER, PIMA COUNTY, ARIZONA

**NOTES**

- (1) ACP - ALUMINUM CAP PIN FOUND
- (2) INDICATES 5/8" STEEL PIN SET MKD L.S. 4680 UNLESS NOTED
- (3) PV - PALO VERDE
- (4) SAG - SAGUARO

REVISIONS	BY	DATE

design and development incorporated  
 6833 N ORACLE ROAD  
 TUCSON, ARIZONA 85704  
 (520) 888-7200



Z-2020-567-002

76-62