

DISCLAIMER:

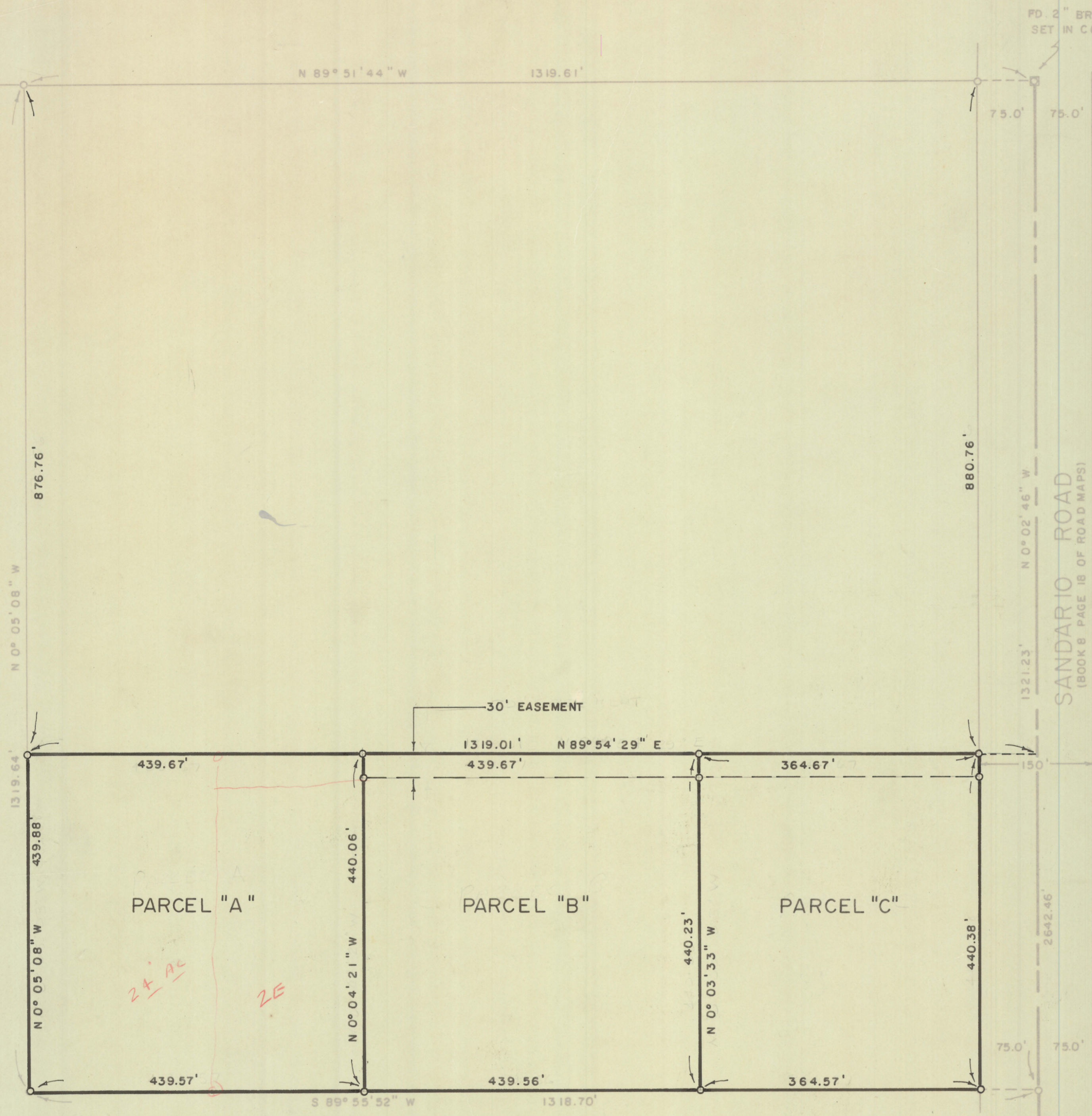
This unrecorded Record of Survey was donated to the City of Tucson. The City of Tucson provides this data for your personal use "as is." Additionally, the City of Tucson provides this information with the understanding that it is not guaranteed to be accurate, correct or complete and conclusions drawn from such information are the responsibility of the user.

FD. GLO. BC
MKD. 1/4 28
33

FD. 2" BRASS CAP
SET IN CONC.

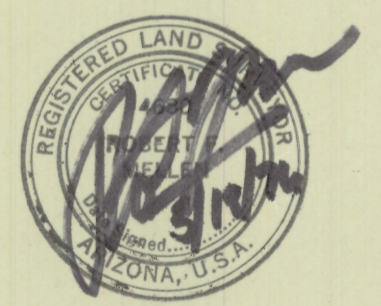


SCALE 1" = 100'



NOTES

- (1) SEE JOB # 73-99
- (2) INDICATES 5/8" STEEL PIN SET
MKD. L.S. 4680 UNLESS NOTED



RESULTS OF SURVEY

OF THE SOUTH ONE - THIRD OF THE NORTHEAST QUARTER OF THE NORTH-
EAST QUARTER OF SECTION THIRTY-THREE, TOWNSHIP TWELVE SOUTH OF
RANGE ELEVEN EAST, GILA AND SALT RIVER BASE AND MERIDIAN, PIMA
COUNTY, ARIZONA

FD. 2" BRASS
CAP IN CONC.
1/4 COR.

ROBERT F. MELLEN
REGISTERED LAND SURVEYOR
TUCSON, ARIZONA

JOB # 76-64
MAY 1976