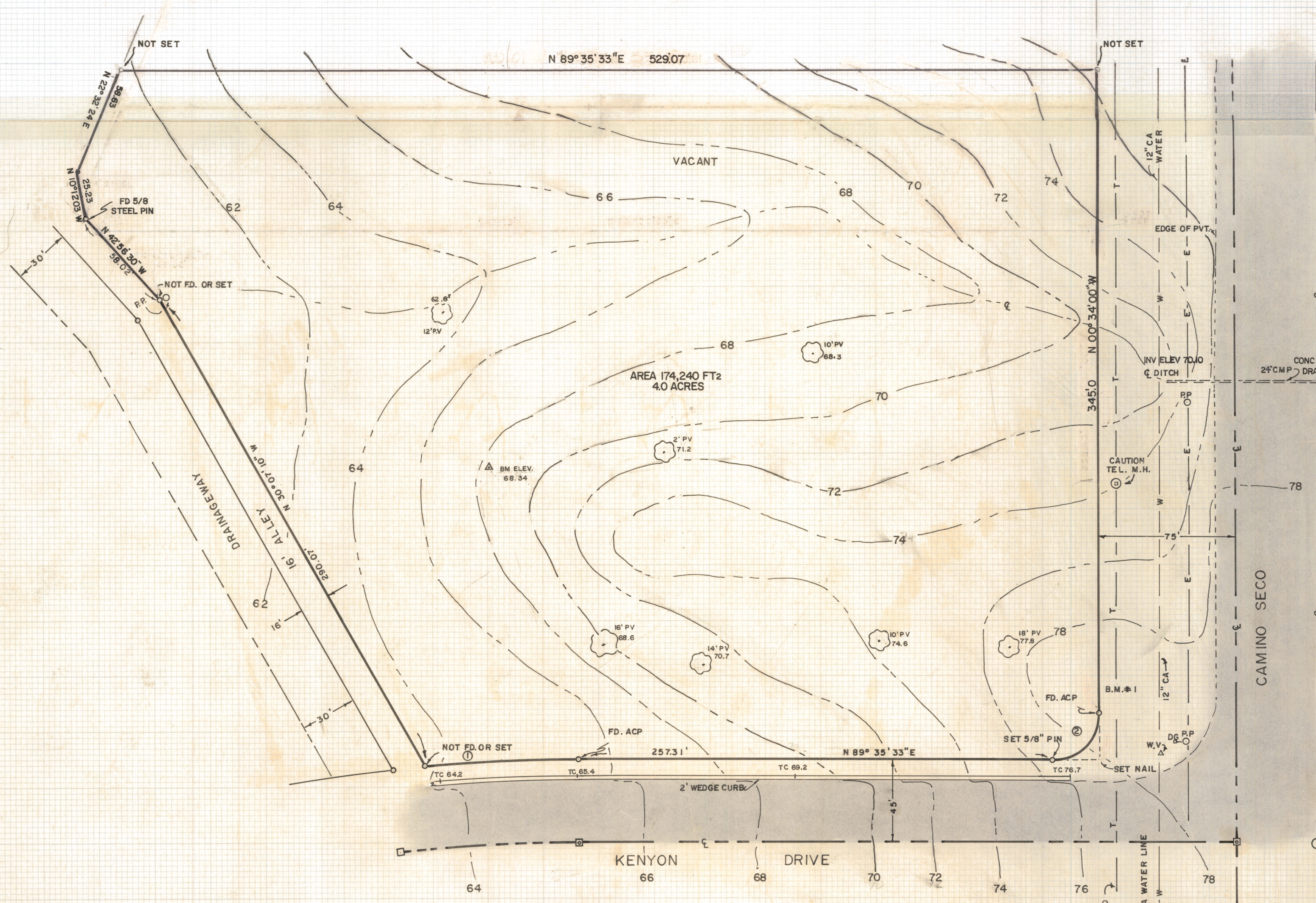


DISCLAIMER:

This unrecorded Record of Survey was donated to the City of Tucson. The City of Tucson provides this data for your personal use "as is." Additionally, the City of Tucson provides this information with the understanding that it is not guaranteed to be accurate, correct or complete and conclusions drawn from such information are the responsibility of the user.



RESULTS OF A TOPOGRAPHICAL SURVEY

OF A PORTION OF BLOCK E OF DESERT STEPPES ESTATES AS RECORDED IN BOOK 15 OF MAPS AND PLATS AT PAGE 47 IN THE OFFICE OF THE PIMA COUNTY RECORDER, PIMA COUNTY, ARIZONA



NOTES

- (1) THIS MAP DOES NOT REPRESENT A BOUNDARY SURVEY
- (2) P.P. = POWER POLE
- (3) D.G. = DOWN GUY
- (4) W.V. = WATER VALVE
- (5) M.H. = MAN HOLE
- (6) [Symbol] INDICATES 2" BRASS PLUG SET IN CONC.

CURVE TABLE				
NO.	RADIUS	LENGTH	TANGENT	Δ
1	999.93	83.40	41.72	4° 46' 44"
2	25.0	39.34	25.07	90° 09' 37"

ROBERT F. MELLEN
REGISTERED LAND SURVEYOR
TUCSON, ARIZONA
JOB 76-74

REVISED 4/18/84 AREA

REVISED JOB 84-42 4-3-84