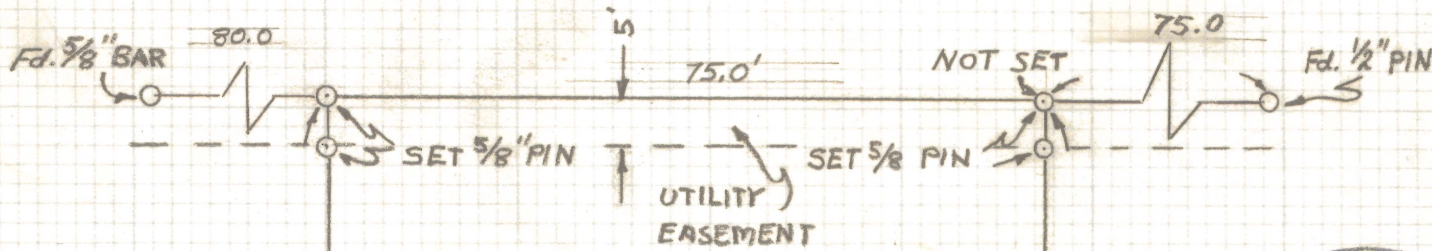


DISCLAIMER:

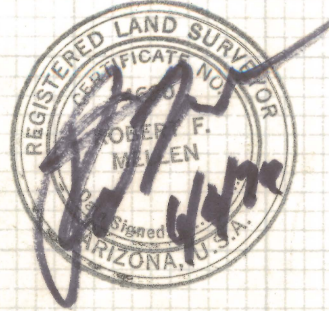
This unrecorded Record of Survey was donated to the City of Tucson. The City of Tucson provides this data for your personal use "as is." Additionally, the City of Tucson provides this information with the understanding that it is not guaranteed to be accurate, correct or complete and conclusions drawn from such information are the responsibility of the user.



LOT 19

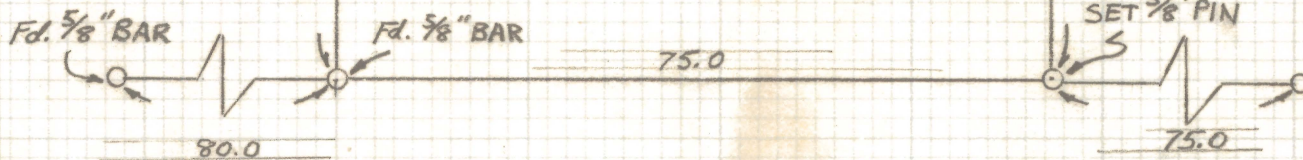
135.0

134.56



SCALE 1"=20'

RESULTS OF SURVEY
OF
LOT 19, BLOCK 6, LA MADERA ADD.
BEING A SUBDIVISION ON RE-
CORD IN THE OFFICE OF THE
PIMA COUNTY RECORDER, PIMA
COUNTY, ARIZONA, IN BOOK 7
AT PAGE 92. OF MAPS & PLATS



Z-2020-577

ROBERT F. MELLEN
REGISTERED LAND SURVEYOR
TUCSON, ARIZONA.
JOB # 76-75
JUNE 1975

B.K.