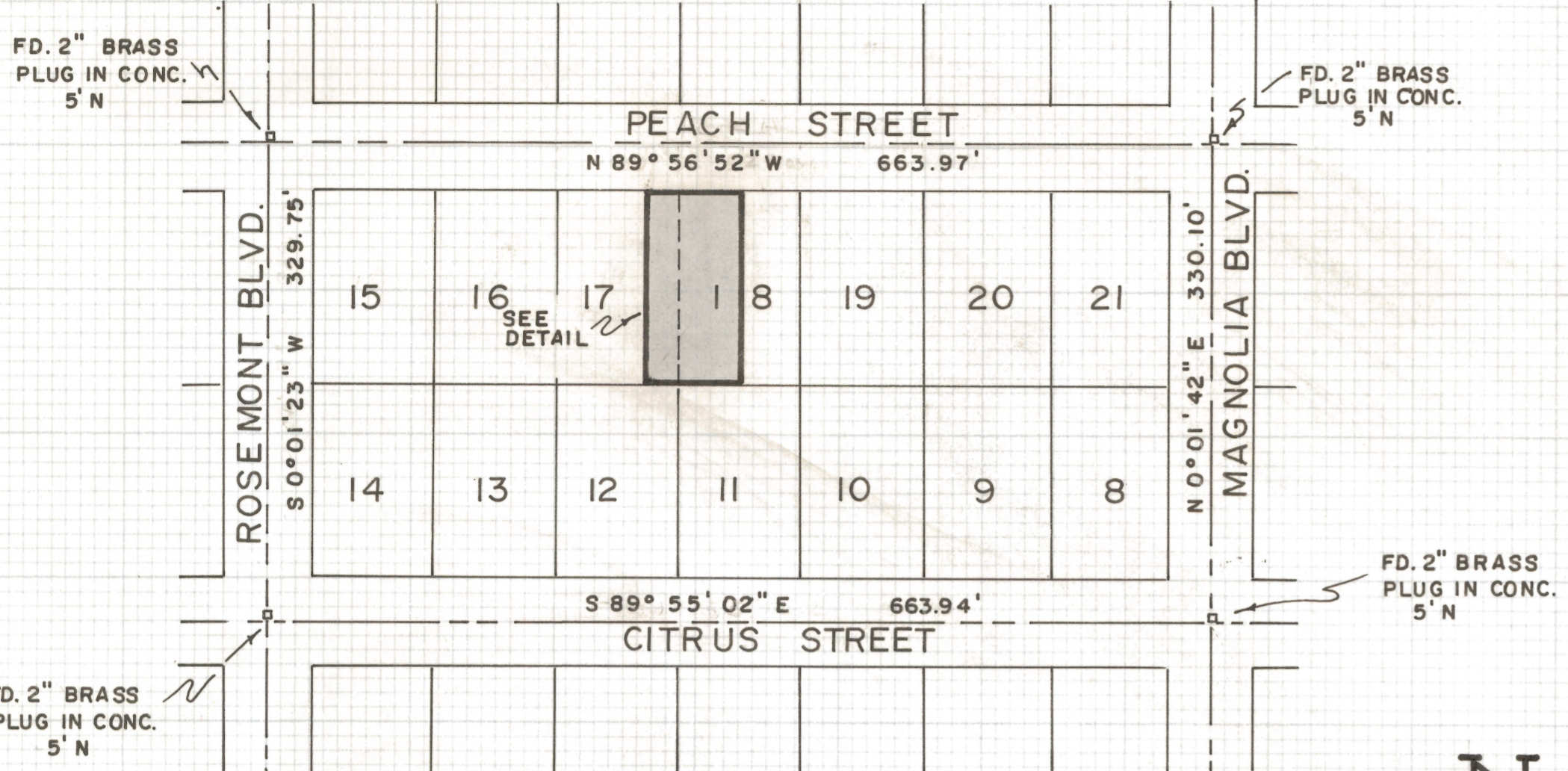


DISCLAIMER:

This unrecorded Record of Survey was donated to the City of Tucson. The City of Tucson provides this data for your personal use "as is." Additionally, the City of Tucson provides this information with the understanding that it is not guaranteed to be accurate, correct or complete and conclusions drawn from such information are the responsibility of the user.



SCALE 1" = 100'



SCALE AS NOTED

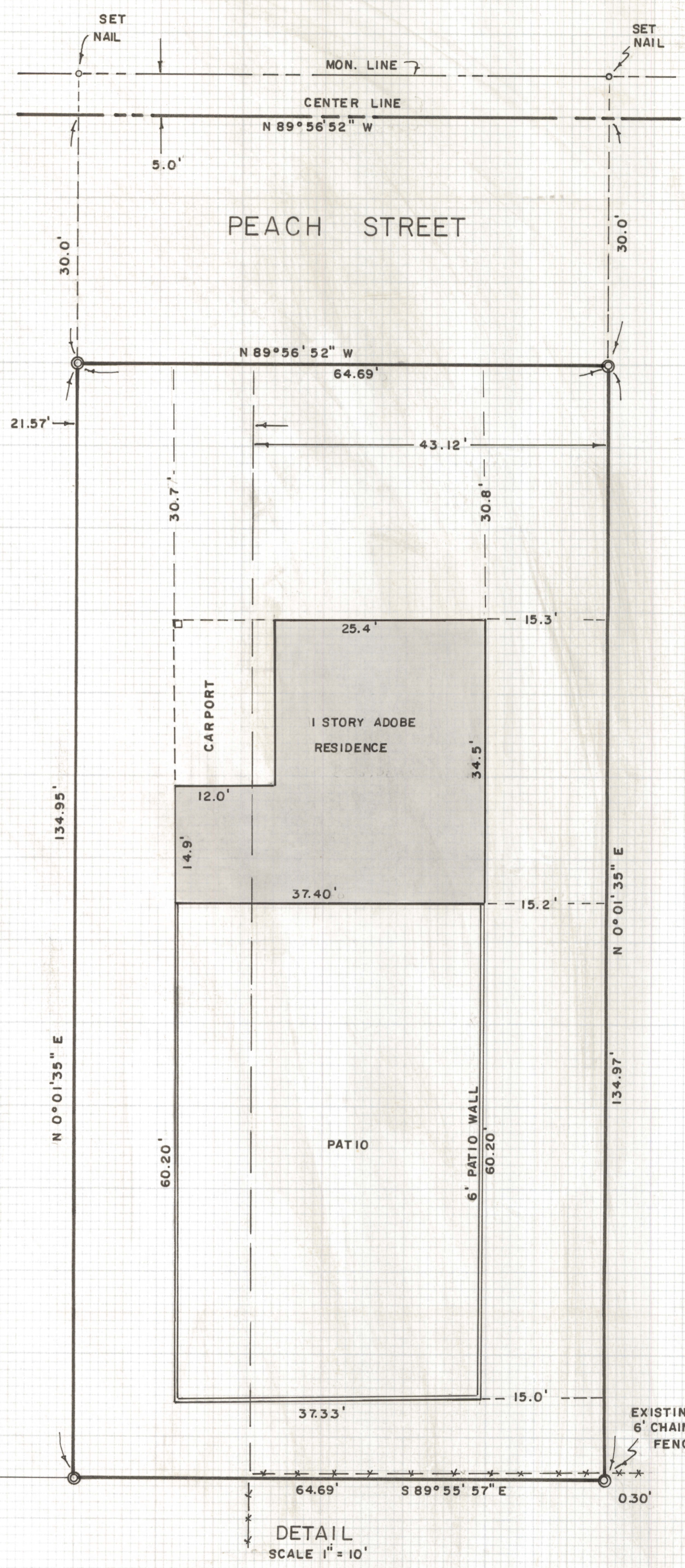
RESULTS OF SURVEY

OF THE EAST 21.57 FEET OF LOT SEVENTEEN AND THE WEST 43.12 OF LOT EIGHTEEN OF THE RESUBDIVISION OF BLOCKS THREE AND FOUR OF CLOVER LEAF ADDITION, RECORDED IN BOOK SIX OF MAP AND PLATS AT PAGE FIFTY IN THE OFFICE OF THE PIMA COUNTY RECORDER, PIMA COUNTY, ARIZONA



NOTES

- (1) INDICATES 5/8" STEEL PIN MKD. L.S. 4680 SET UNLESS NOTED
- (2) INDICATES 3/4" OPEN IRON PIPE FOUND
- (3) THE CITY OF TUCSON MONUMENTS APPEAR TO BE APPROXIMATELY 1.4' EAST OF OTHER MONUMENTS IN THIS BLOCK



ROBERT F. MELLEN
 REGISTERED LAND SURVEYOR
 TUCSON, ARIZONA
 JOB # 76-86
 JUNE 1976