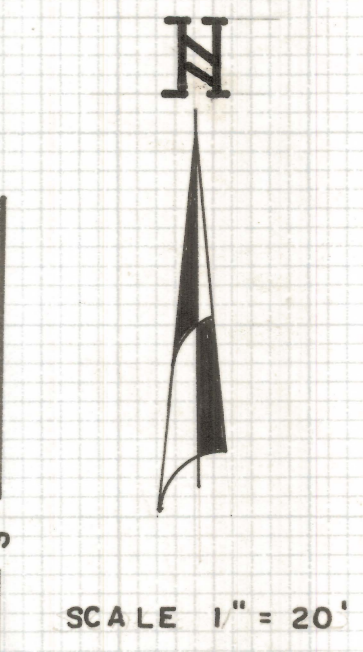
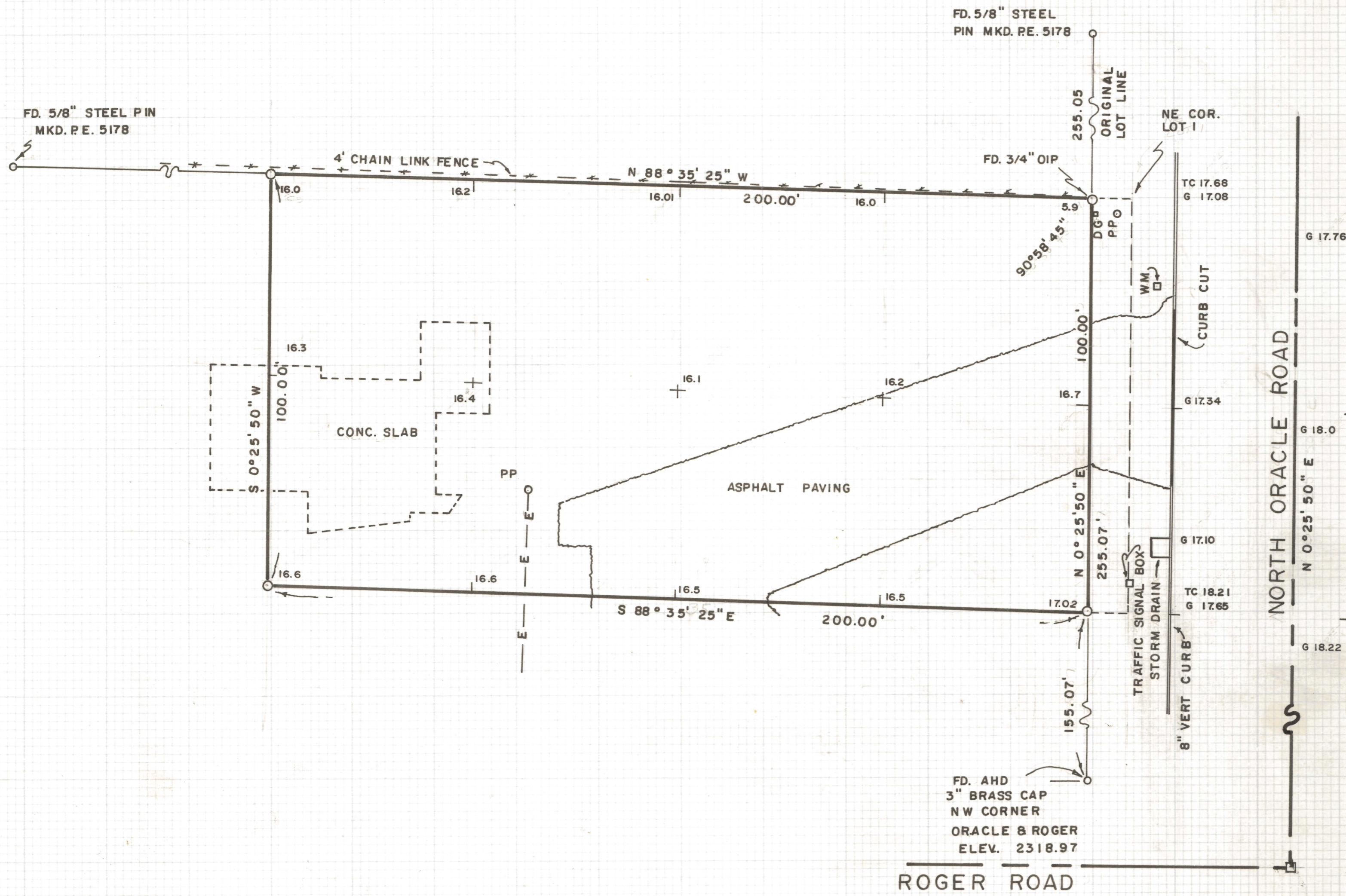


# **DISCLAIMER:**

**This unrecorded Record of Survey was donated to the City of Tucson. The City of Tucson provides this data for your personal use "as is." Additionally, the City of Tucson provides this information with the understanding that it is not guaranteed to be accurate, correct or complete and conclusions drawn from such information are the responsibility of the user.**



RIM 17.81  
DIP 7.22  
FL 10.59

**NOTES**

- (1) INDICATES 5/8" STEEL PIN SET MKD. L.S. 4680
- (2) BENCH MARK DATUM ARIZ. HWY. DEPT. 3" BRASS CAP N.W. CORNER OF ROGER & ORACLE RD. ELEV. 2318.97
- (3) T.C. - TOP OF CURB
- (4) G - GUTTER
- (5) WM - WATER METER
- (6) DG - DOWN GUY
- (7) PP - POWER POLE
- (8) —E—E— OVERHEAD ELECTRIC
- (9) BASIS OF BEARING

**RESULTS OF SURVEY**

OF A PORTION OF LOT ONE OF THE SUBDIVISION OF THE SOUTHEAST QUARTER OF THE SOUTHEAST QUARTER, SECTION 23, TOWNSHIP 13 SOUTH OF RANGE 13 EAST, GILA AND SALT RIVER BASE AND MERIDIAN, PIMA COUNTY, ARIZONA AS RECORDED IN BOOK 3 OF MAPS AND PLATS AT PAGE 133

ROBERT F. MELLEN  
REGISTERED LAND SURVEYOR  
TUCSON, ARIZONA  
JOB # 76-100  
JULY 1976