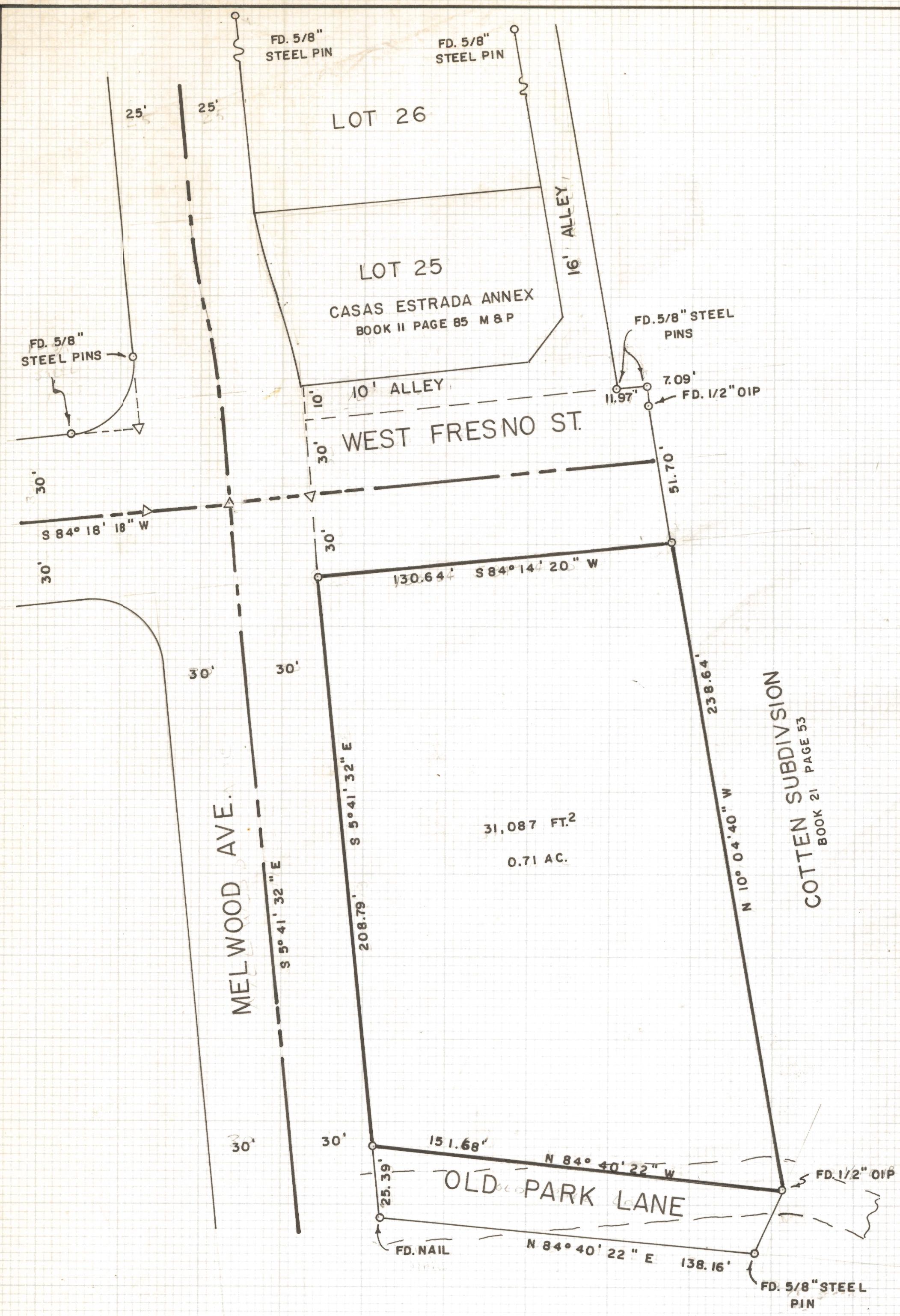


DISCLAIMER:

This unrecorded Record of Survey was donated to the City of Tucson. The City of Tucson provides this data for your personal use "as is." Additionally, the City of Tucson provides this information with the understanding that it is not guaranteed to be accurate, correct or complete and conclusions drawn from such information are the responsibility of the user.



N

SCALE 1" = 30'



NOTES

- (1) BASIS OF BEARINGS N 10° 04' 40" W AS SHOWN ON COTTEN SUBDIVISION BOOK 21 P 53 MAPS & PLATS
- (2) OIP - OPEN IRON PIPE
- (3) INDICATES 60D NAIL SET
- (4) INDICATES 5/8" STEEL PIN SET MKD. LS 4680 UNLESS NOTED
- (5) THERE ARE PRESENTLY ONE OR MORE HOUSEHOLDS USING OLD PARK LANE FOR ACCESS
- (6) AREA OF OLD PARK LANE 3611 FT.² 0.08 AC.

RESULTS OF SURVEY

OF A PORTION OF WHITE LOTS NO. 27 AND 28 OF SECTION ELEVEN, TOWNSHIP FOURTEEN SOUTH, RANGE THIRTEEN EAST, GILA AND SALT RIVER BASE AND MERIDIAN, PIMA COUNTY, ARIZONA

ROBERT F. MELLEN
 REGISTERED LAND SURVEYOR
 TUCSON, ARIZONA
 JOB # 76-104
 AUGUST 1976